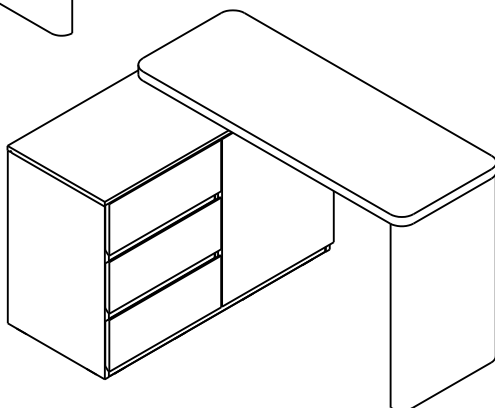
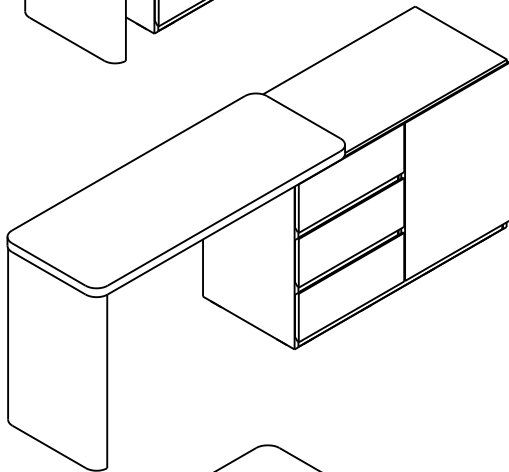
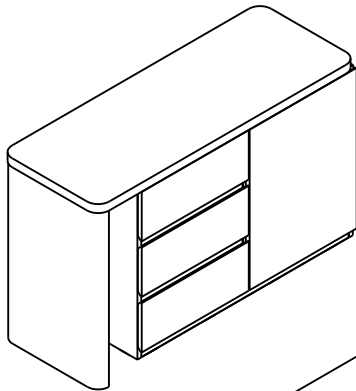
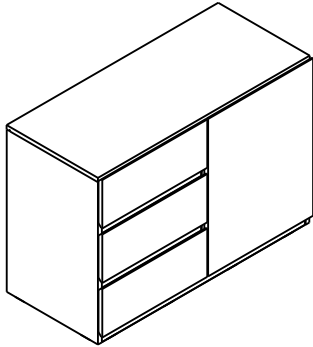


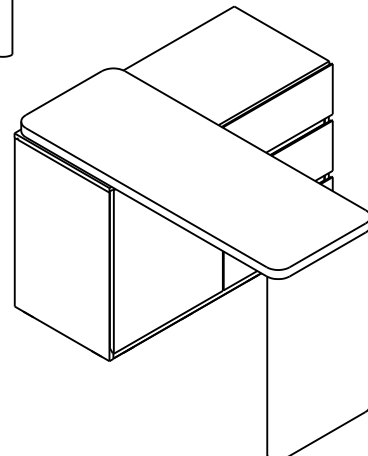
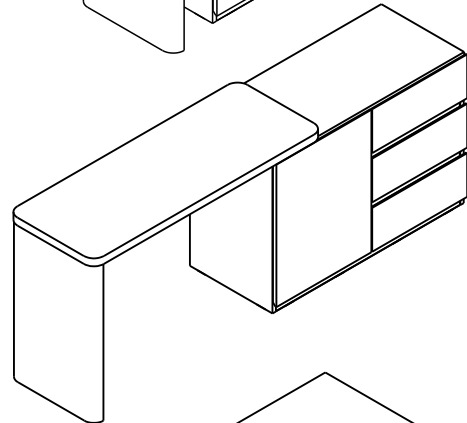
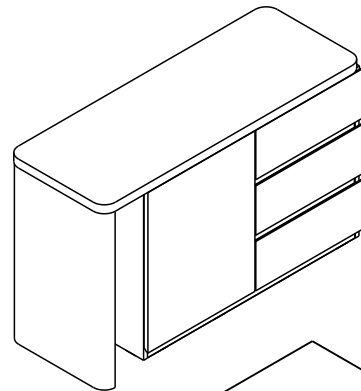
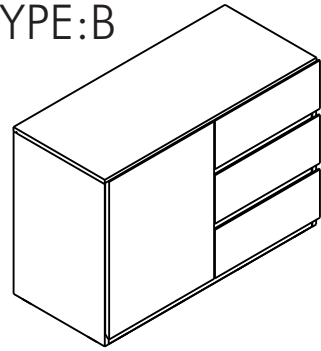
MELTON

Dressing ext.120-195cm.

TYPE:A



TYPE:B



CONNECT SYSTEM

1

3

2

(Connecting bolts)

WHEN FITTING CAMS
 ENSURE STARTING POSITION IS CORRECT
 BEFORE YOU INSERT CONNECTING BOLT
 TURN CLOCKWISE UNTIL SECURE

✓				✗
	CORRECT	WRONG		

M4x16mm.

OUT

IN

M4x16mm.

i

40mm.

☹

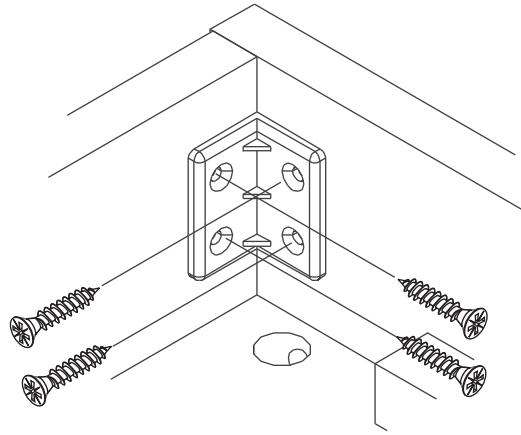
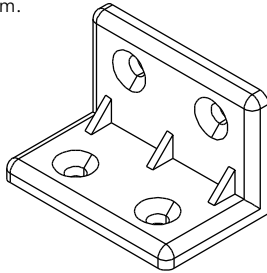
✗

EQ

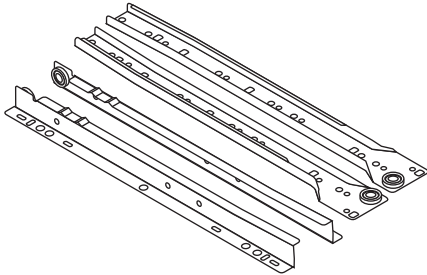
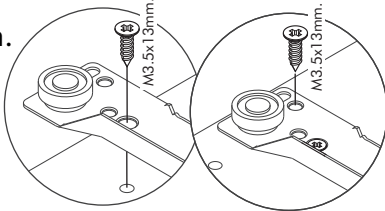
☺

✓

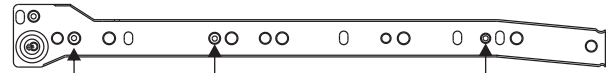
M3.5x20mm.



M3.5x13mm.

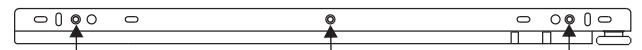


1



Use these holes

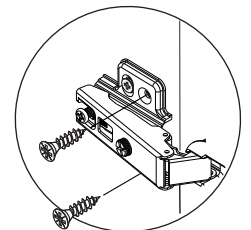
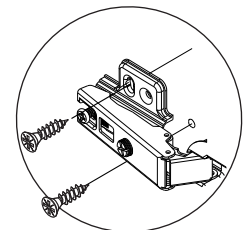
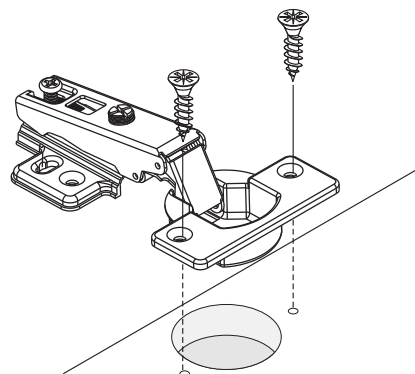
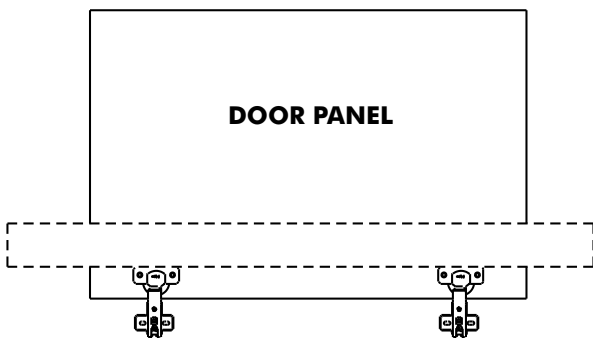
2

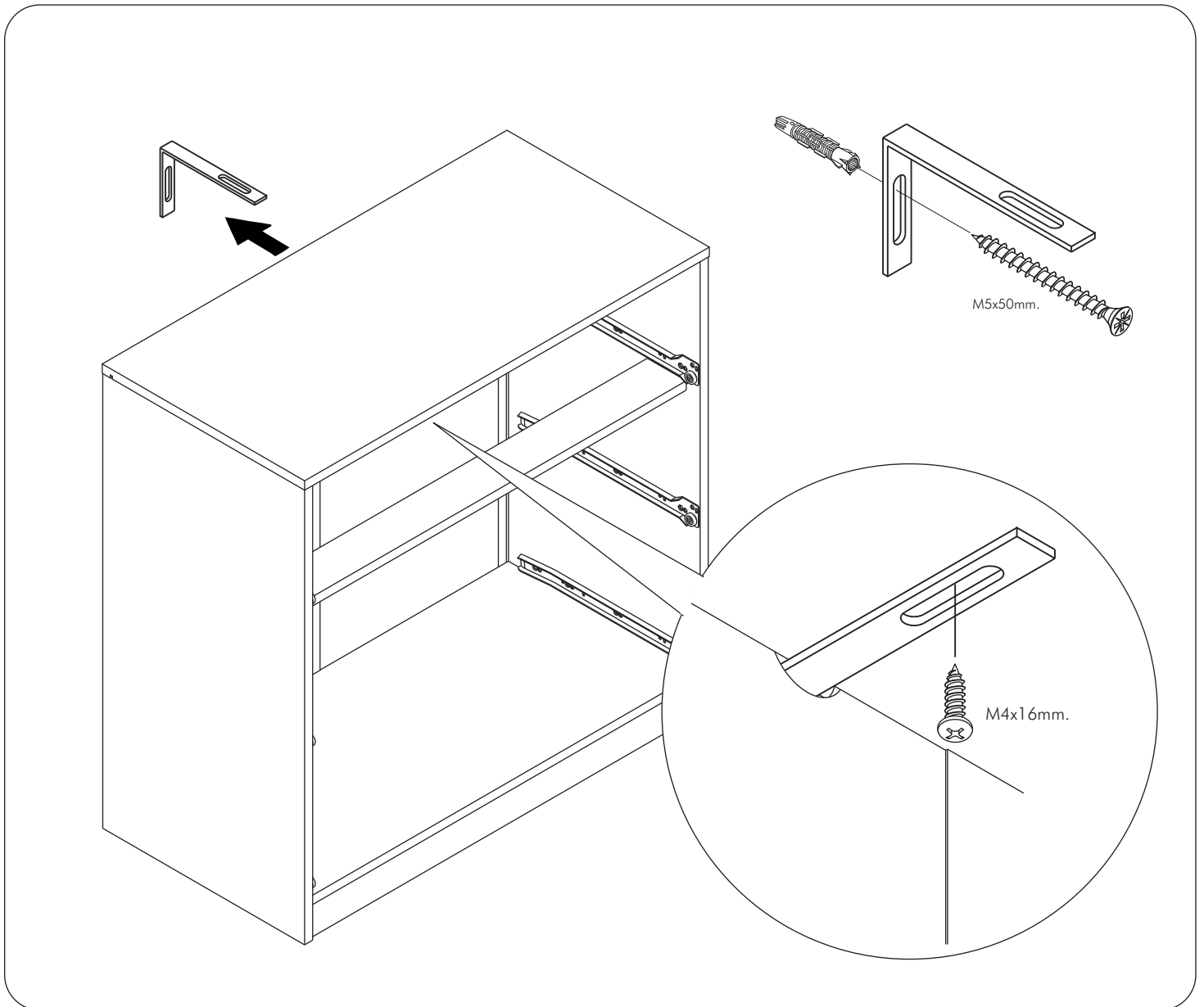
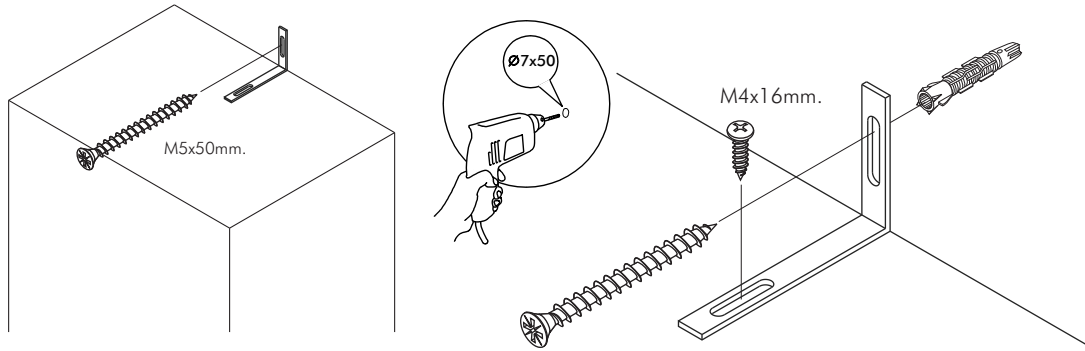


Use these holes



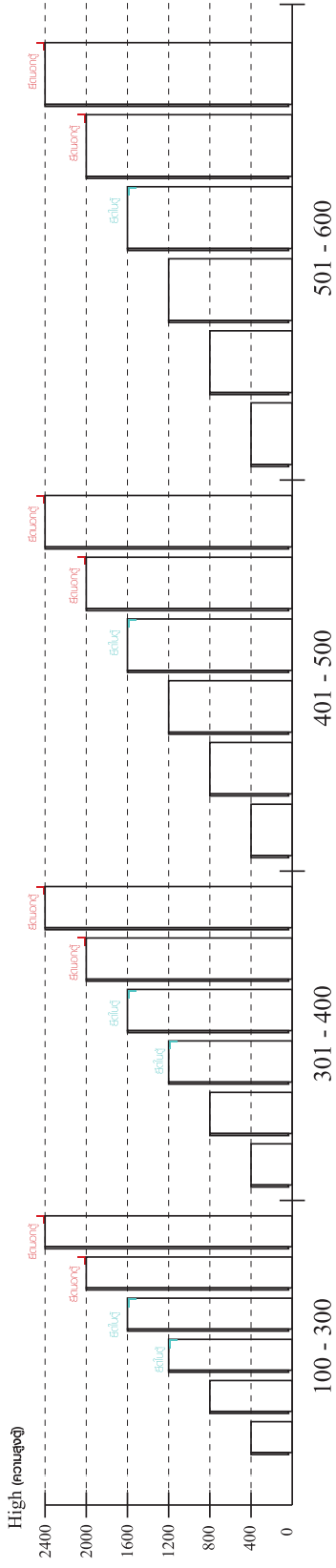
M4x16mm.



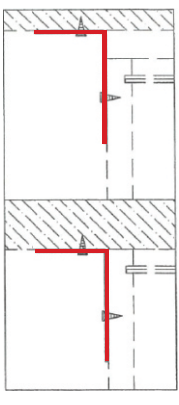


มาตรฐาน การระบุสินค้าที่ต้องยึด Fitting กับสับ (Safety Fitting) ***หมายเหตุ เป็นชุดเด็ก ไม้ติดตั้ง Fitting กับสับทุกตัว***

■ หมวด ตู้บานเปิด / ตู้บานปิด + ช่องใส่



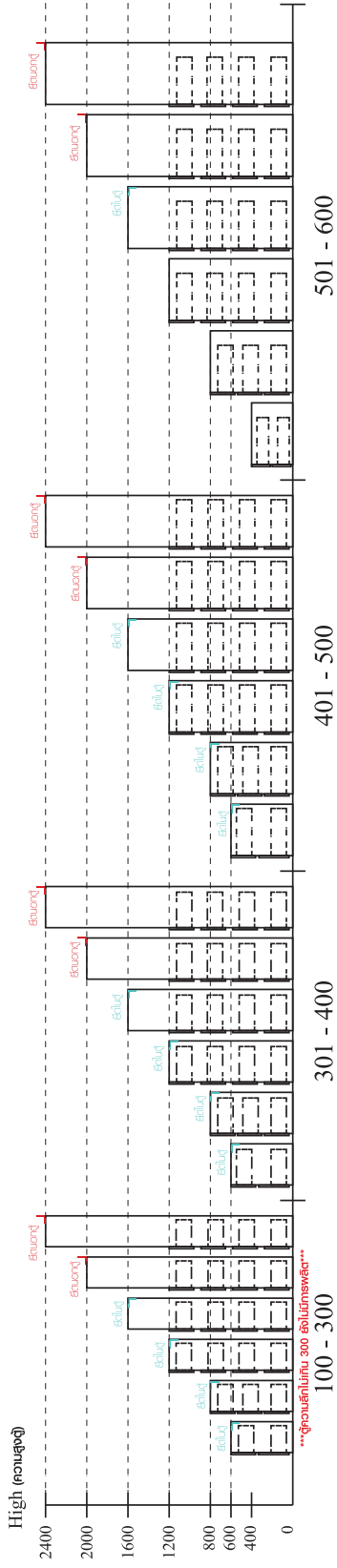
■ ติดตั้งจากสับกับตู้สูง (ตั้งแต่ 2 m. ขึ้นไป)



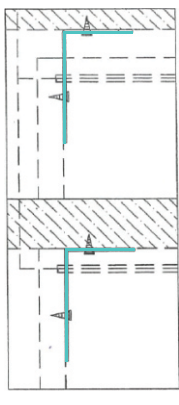
ติดตั้งบนผนัง

ติดตั้งลอยหลบผนัง

■ หมวด ตู้ลิ้นชัก / ตู้ลิ้นชัก + ช่องใส่ / ตู้ลิ้นชัก + บานเปิด / ตู้ลิ้นชัก + บานสไลด์



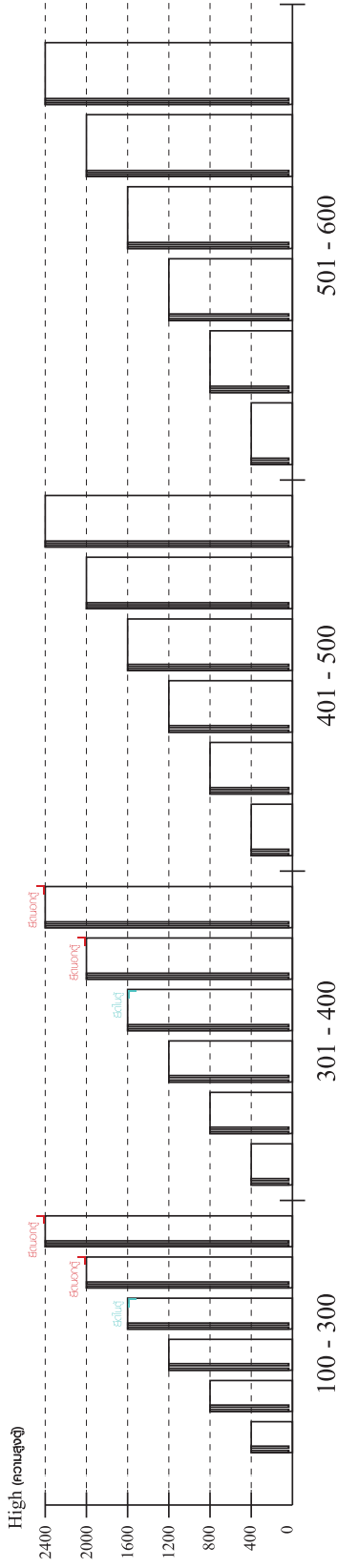
■ ติดตั้งจากสับกับตู้เตี้ย (น้อยกว่า 2 m.)



ติดตั้งบนผนัง

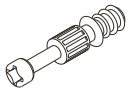
ติดตั้งลอยหลบผนัง

■ หมวด ตู้บานสไลด์ / ตู้ใส่



HARDWARE

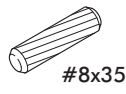
-BODY SET



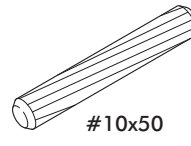
x 8



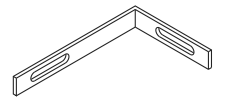
x 8



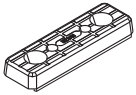
x 12



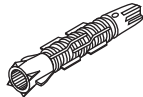
x 3



x 1



x 12



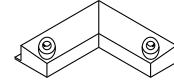
x 1



x 2



x 8



x 2

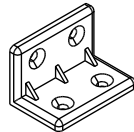


x 4



5x18 mm.

x 2



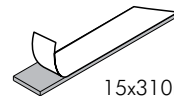
x 14



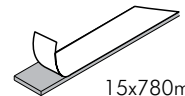
x 4



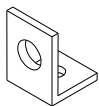
x 4



x 4



x 4

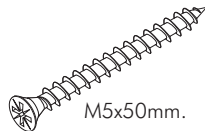


x 4



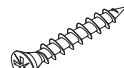
TFL4 M6x15mm.

x 4



M5x50mm.

x 1



M3.5x20mm.

x 16



M4x50mm.

x 2



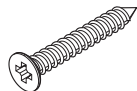
Mx4x40mm.

x 10



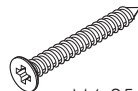
M4x16mm.

x 96



M4x30mm.

x 16



M4x35mm.

x 8



M3.5x16mm.

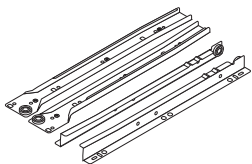
x 4



M4x16mm.

x 3

-DRAWER SET

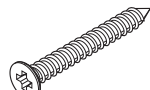


x 3



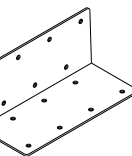
M3.5x13mm.

x 42

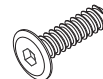


Mx4x40mm.

x 24

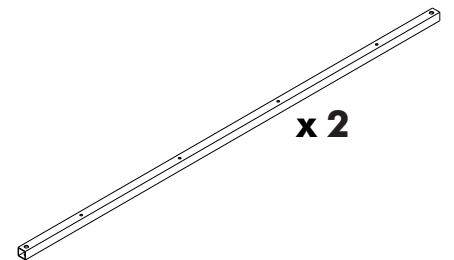


x 1



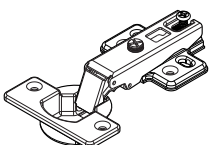
TFL4 M6x23mm.

x 6



x 2

-DOOR SET



x 2



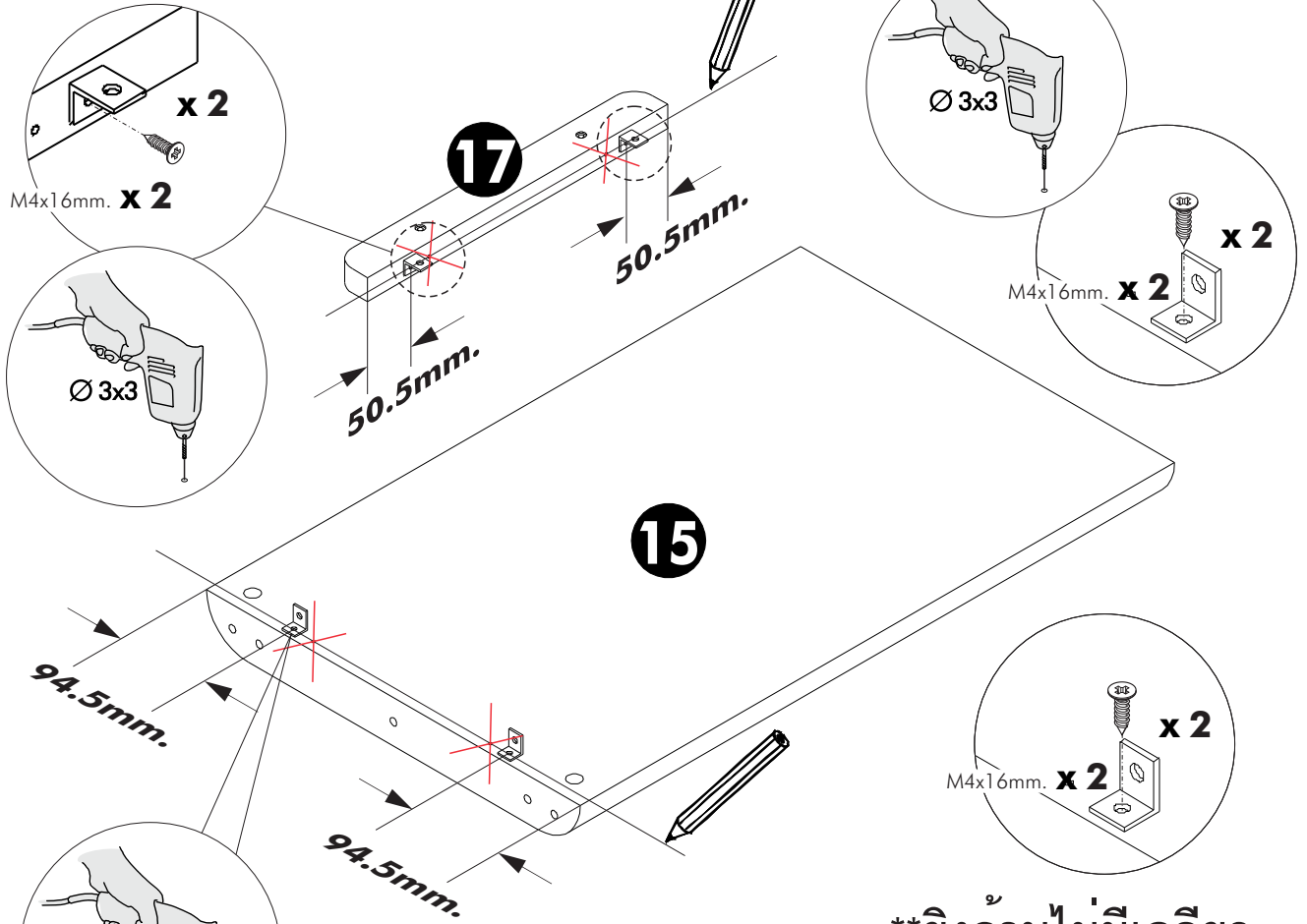
x 8



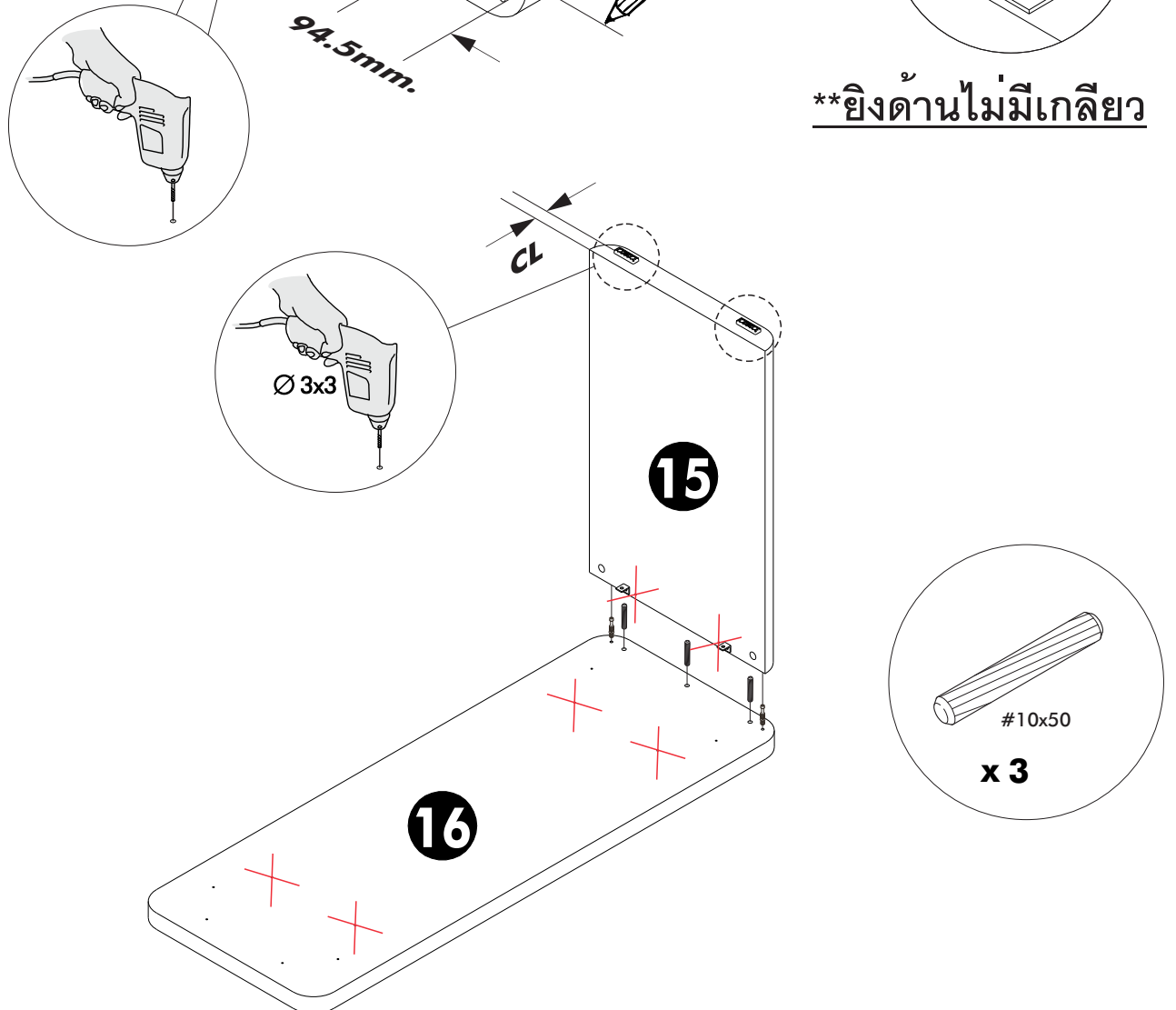
M4x16mm.

x 12

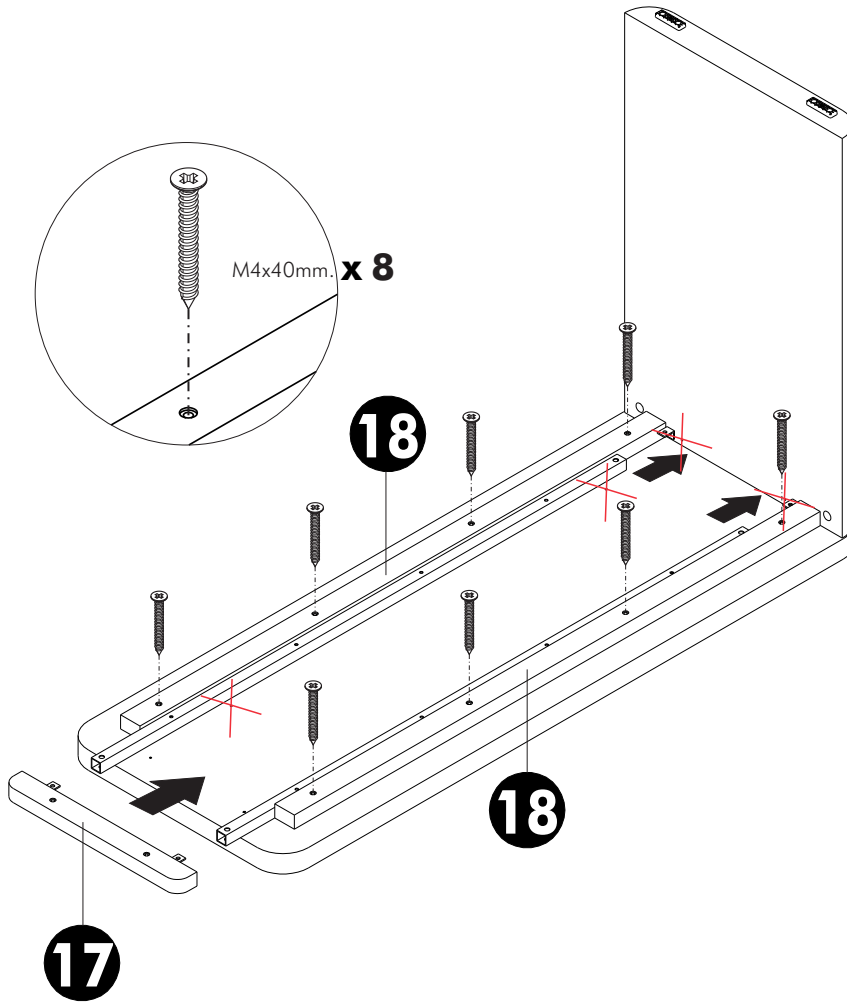
1. **ยิงด้านไม่มีเกลียว



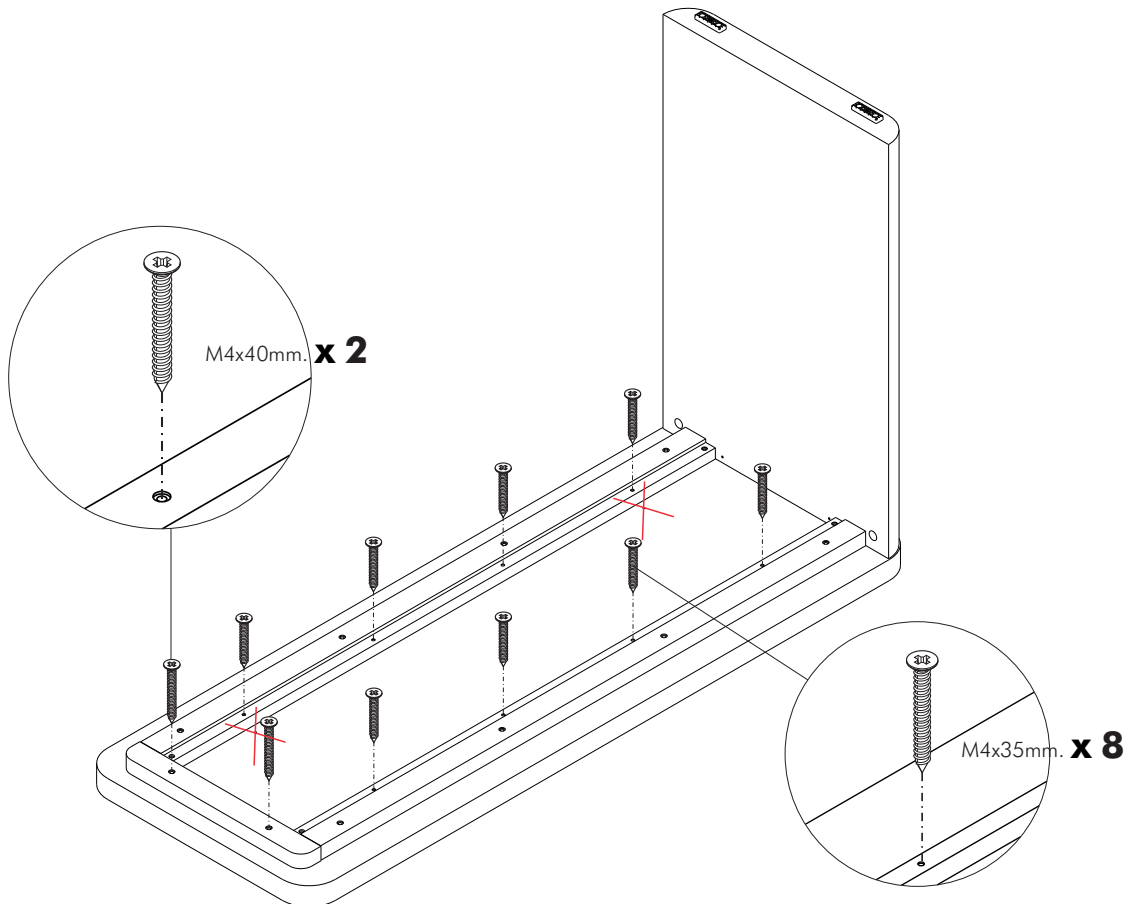
2.



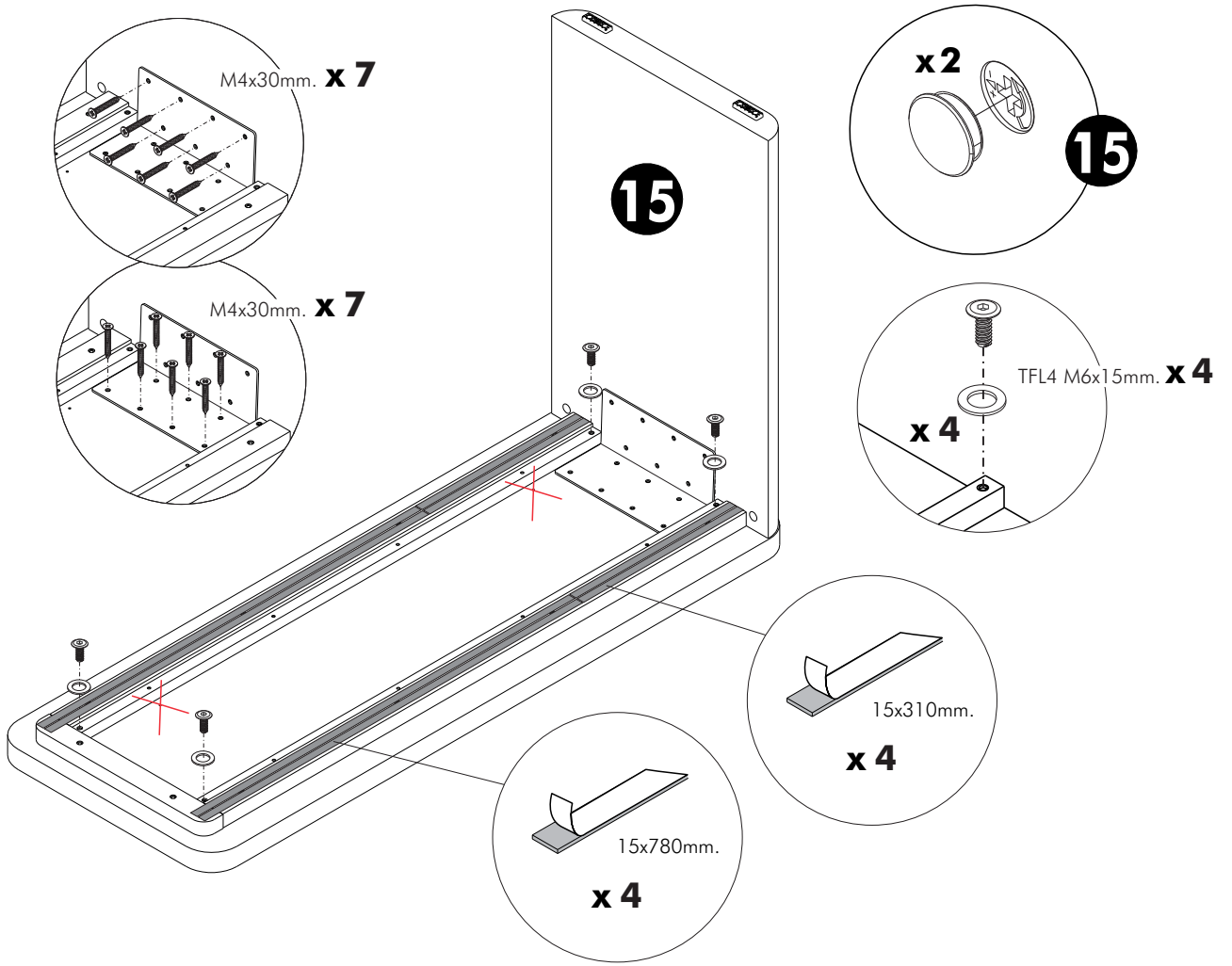
3.



4.

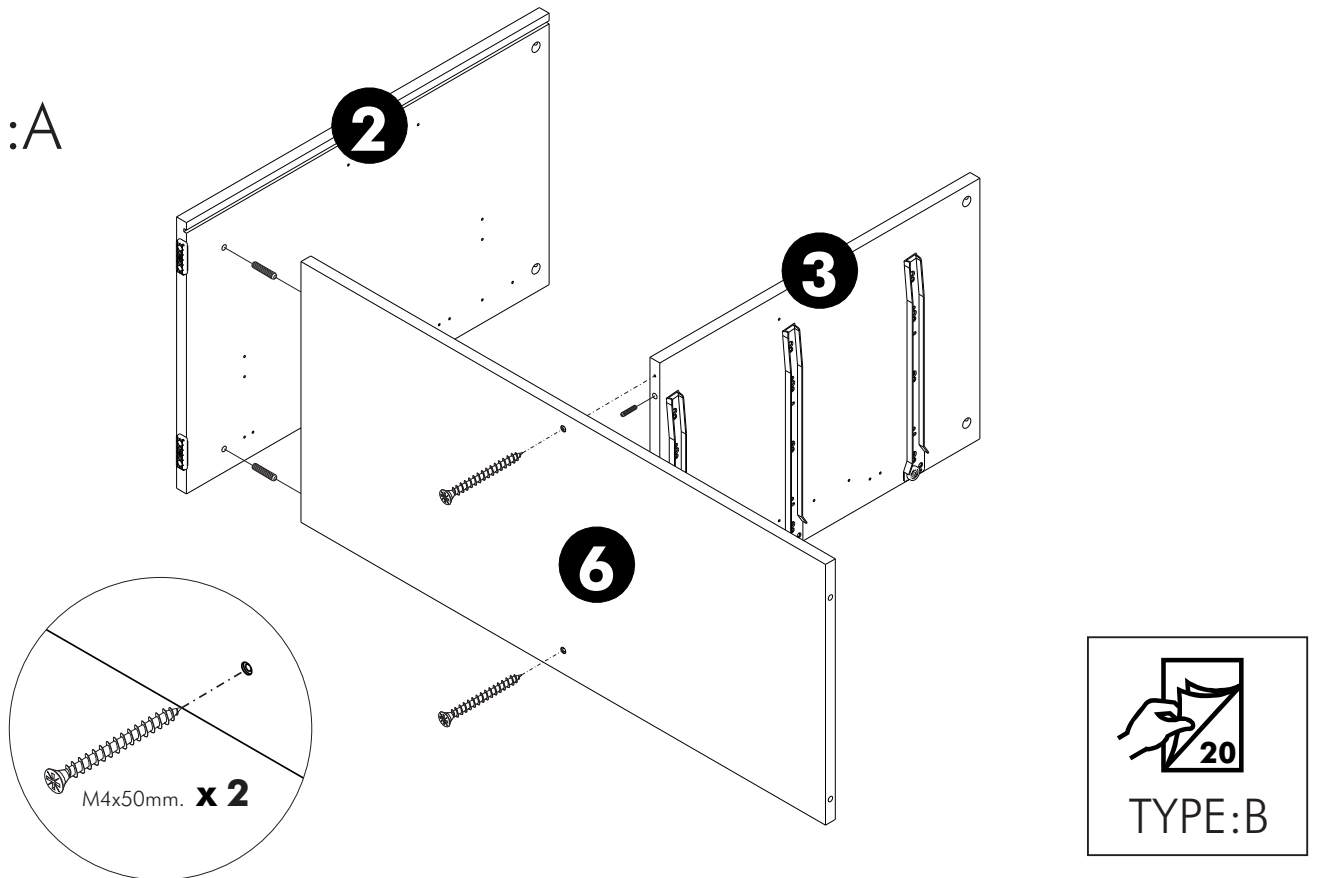


5.

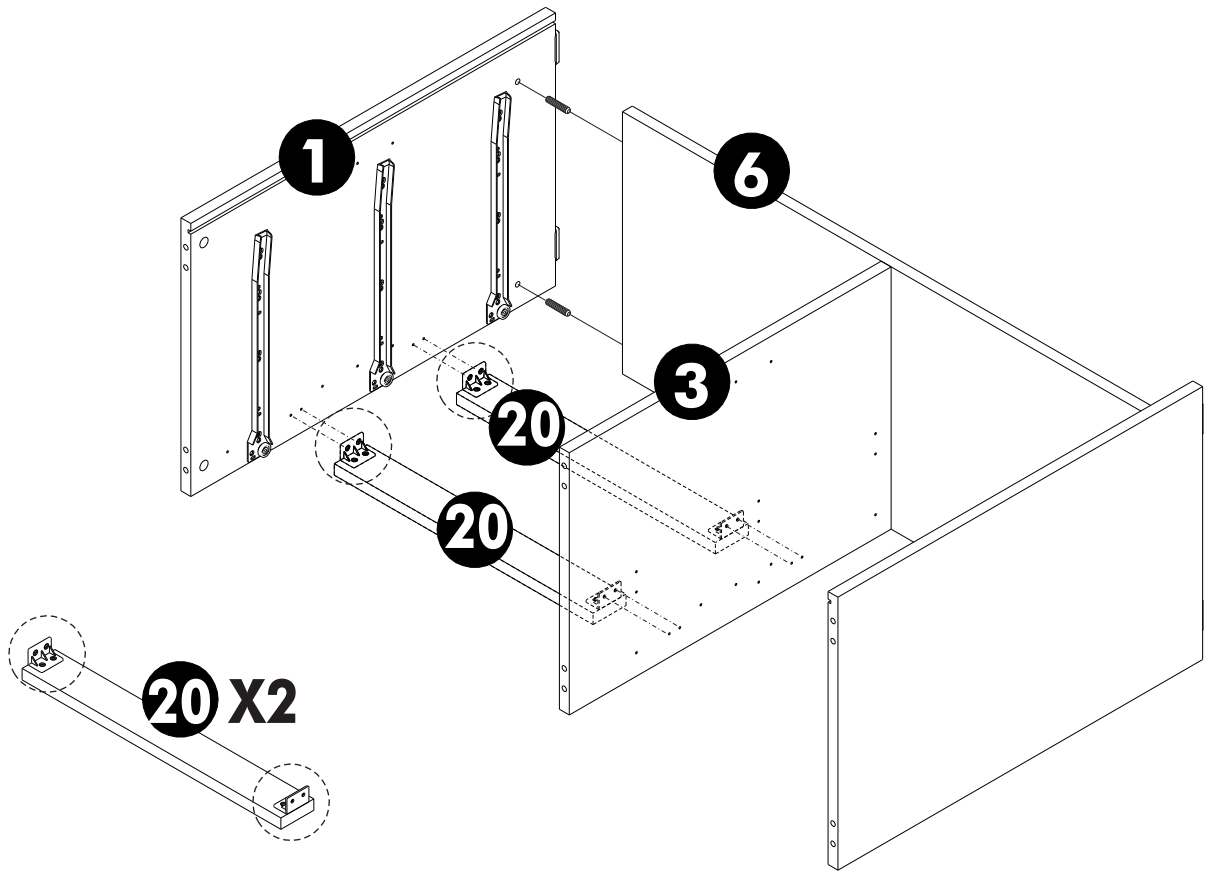


6.

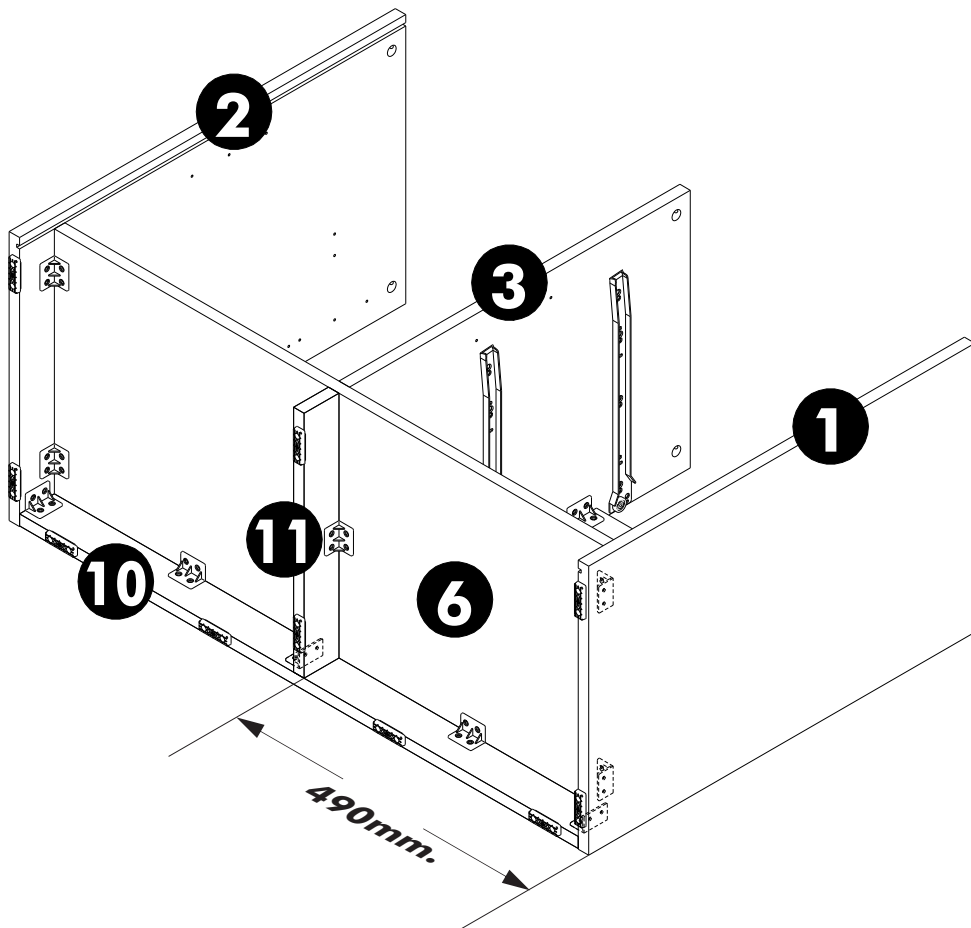
TYPE:A



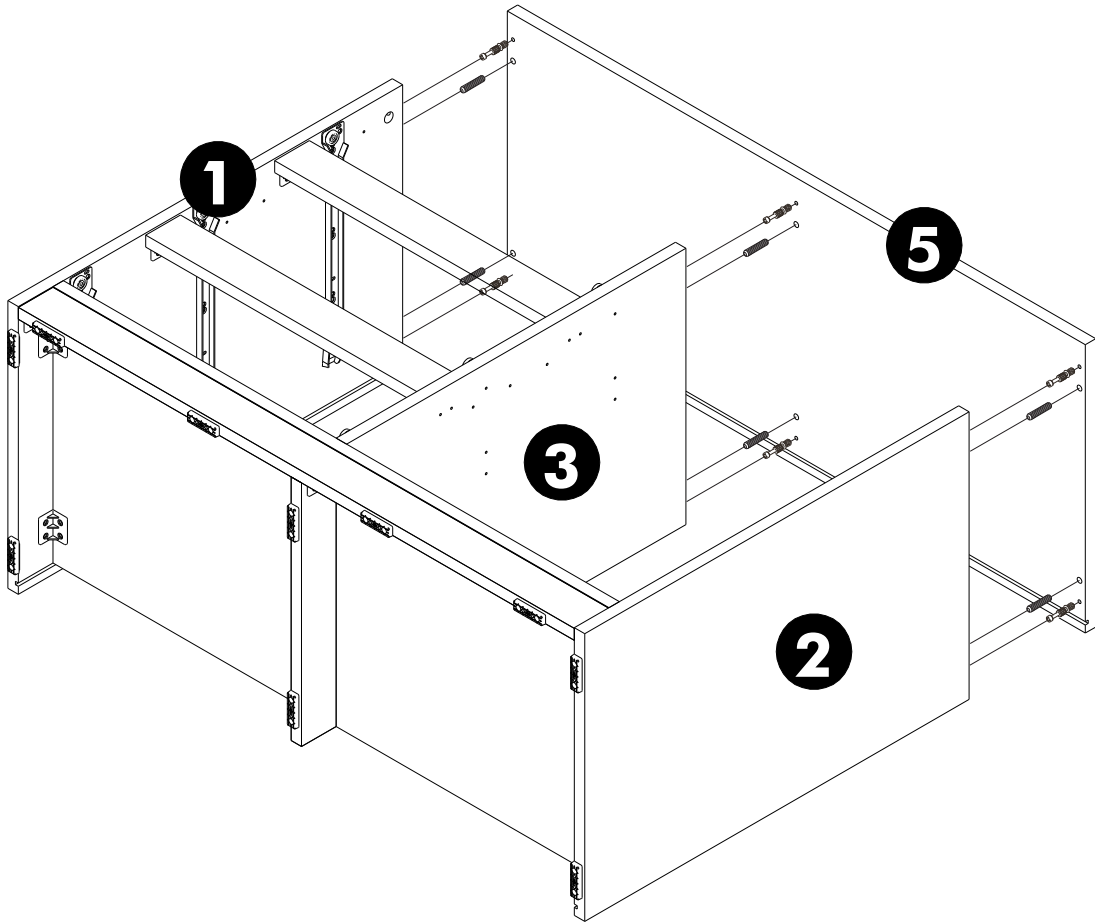
7.



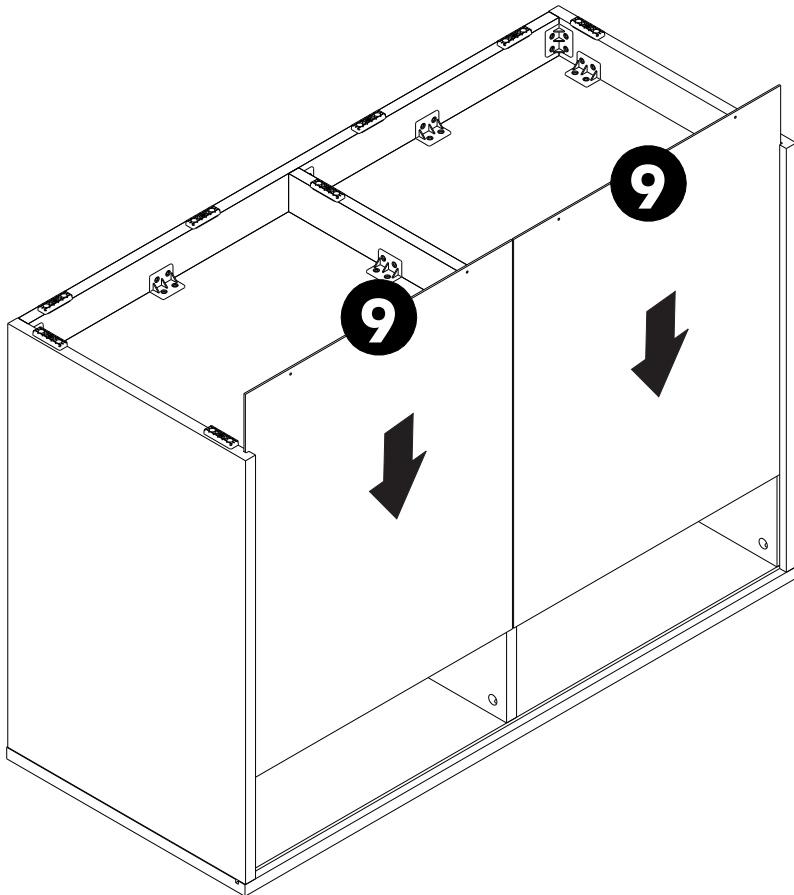
8.



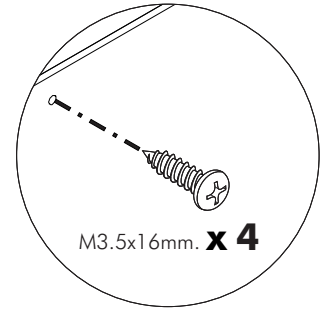
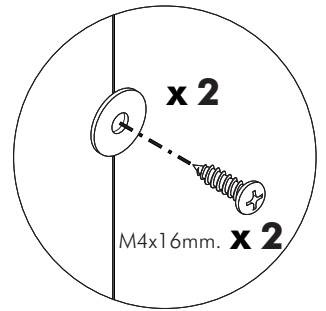
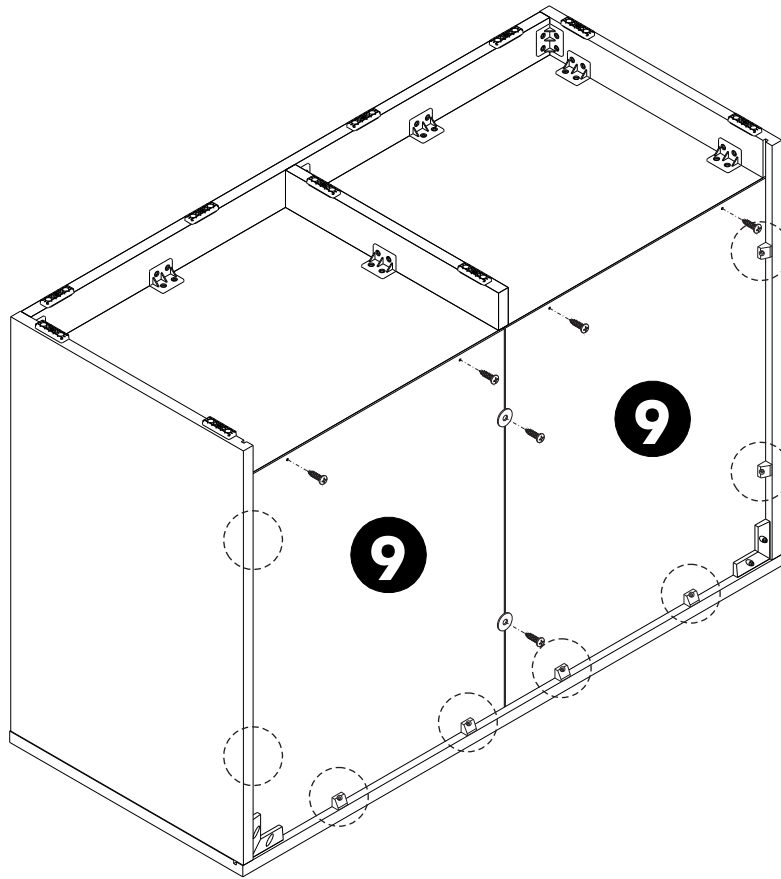
9.



10.



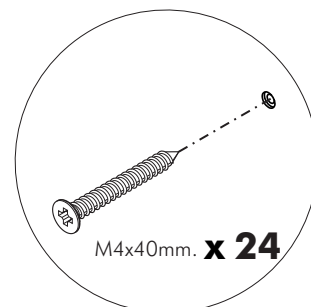
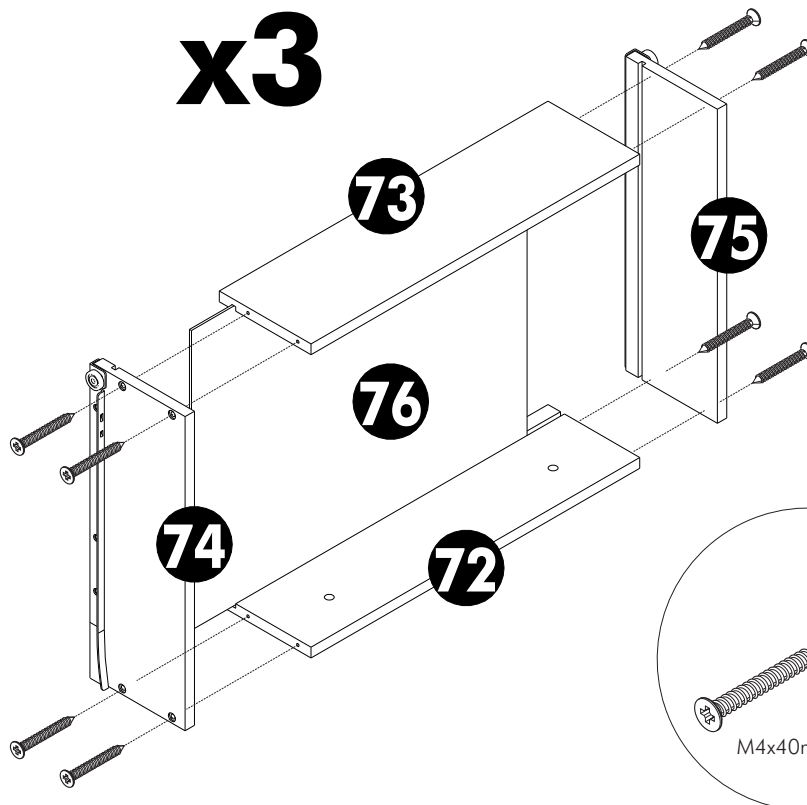
11.



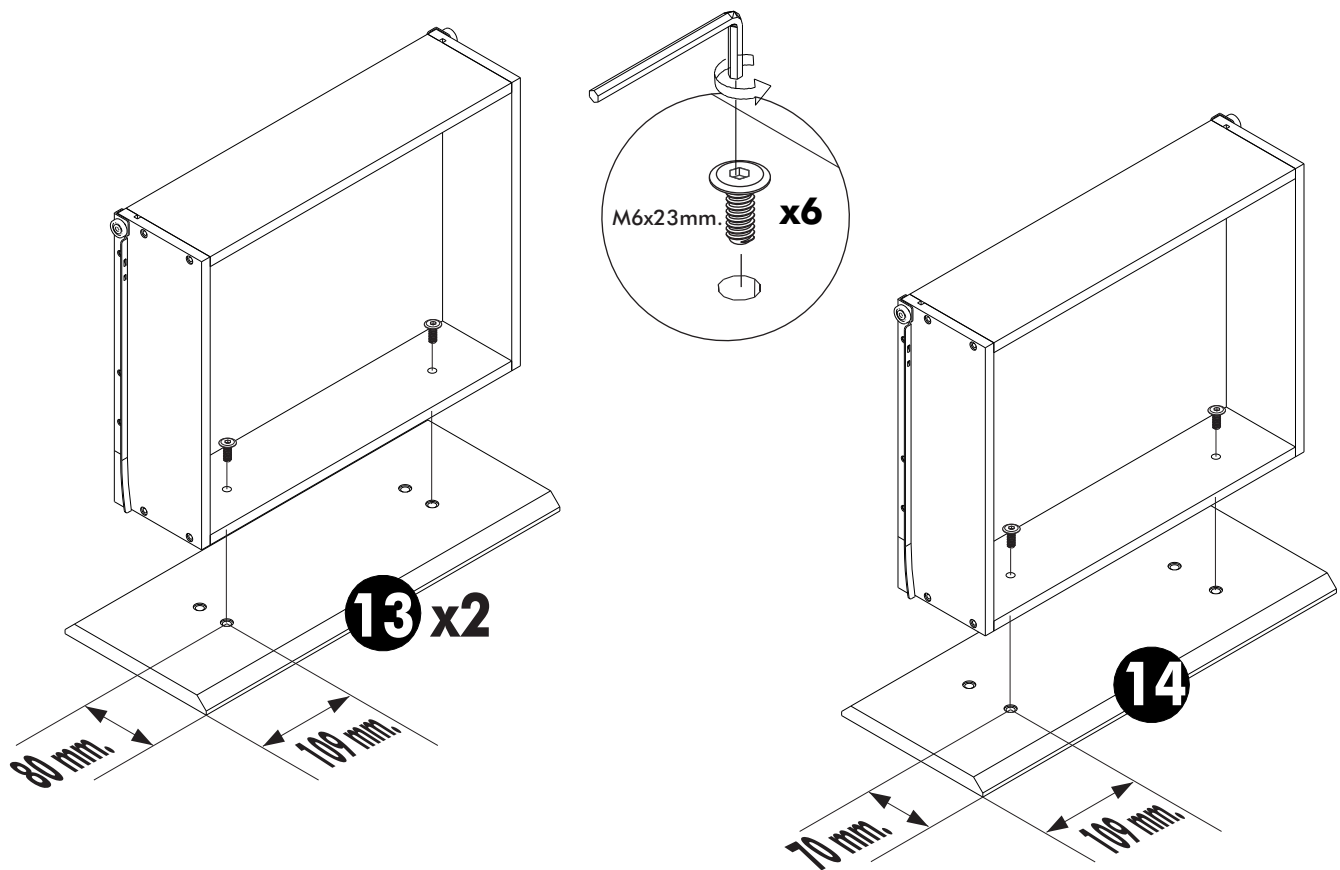
12.

ASSEMBLY

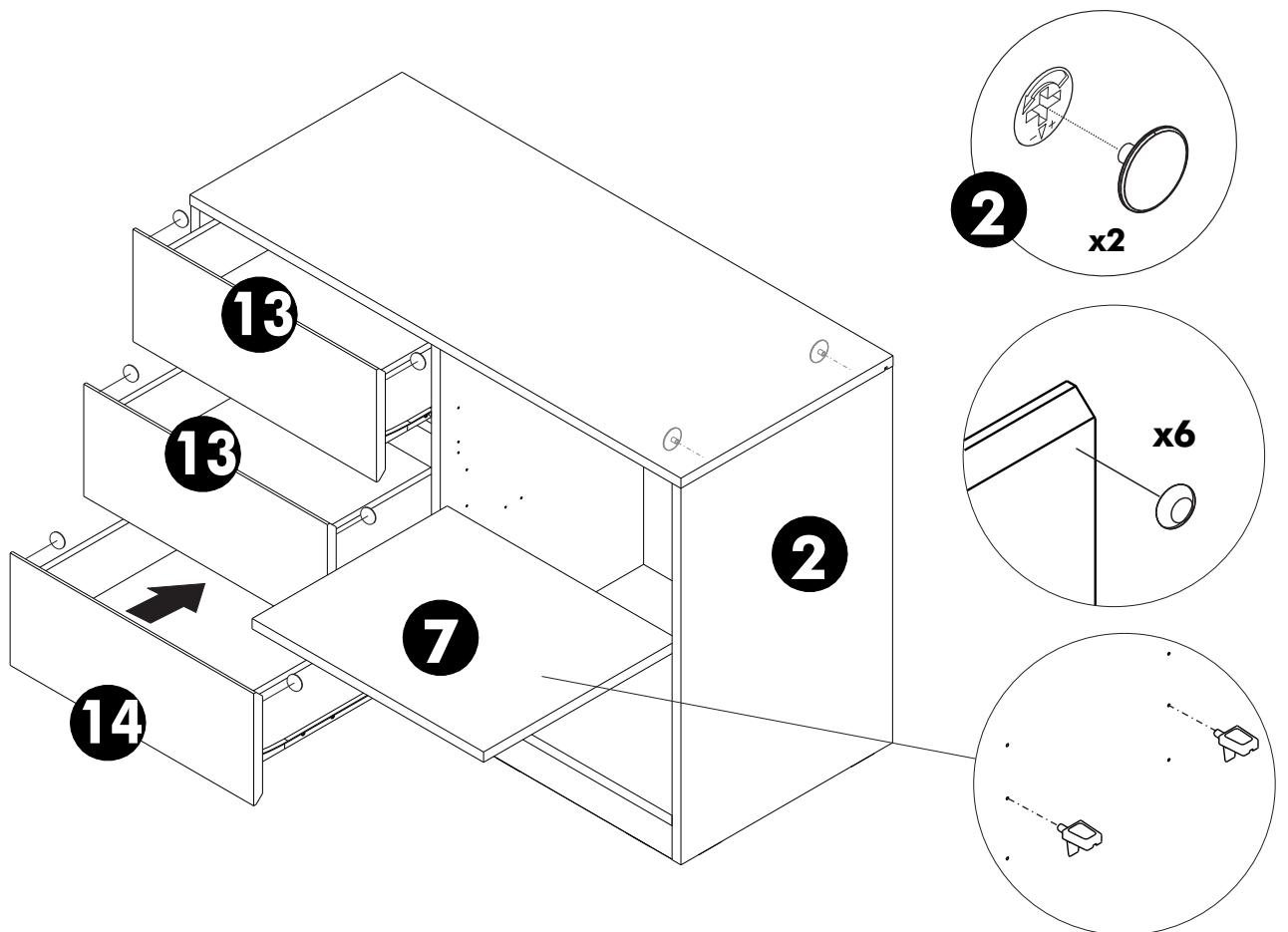
-DRAWER SET



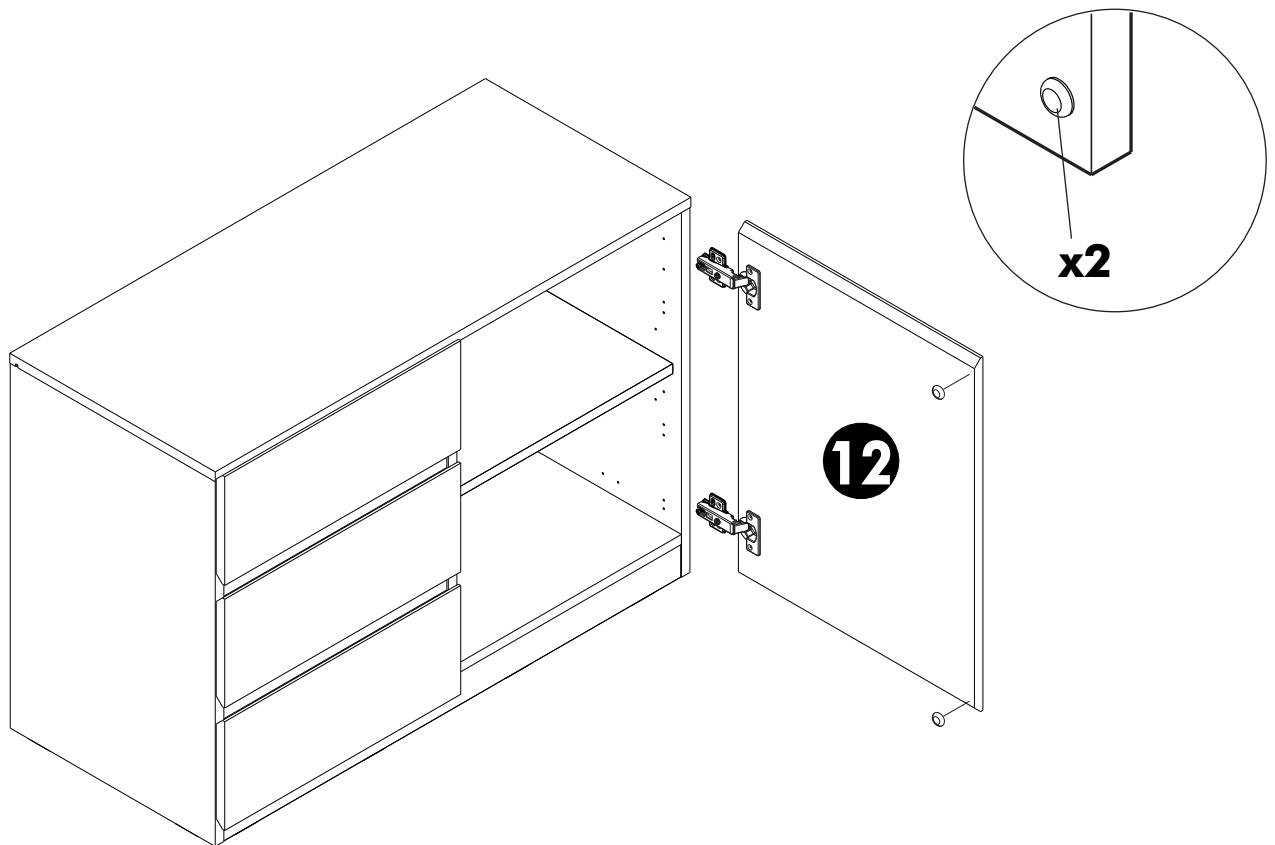
13.



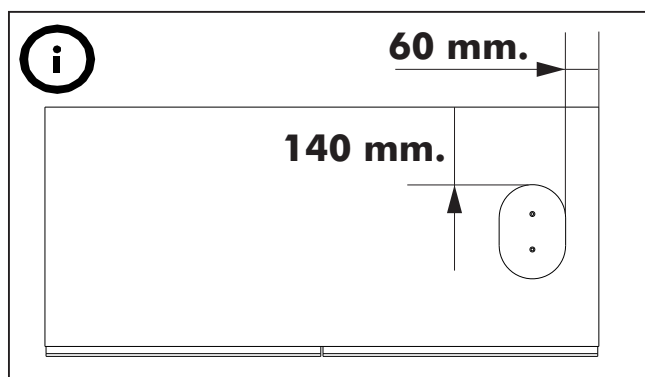
14.



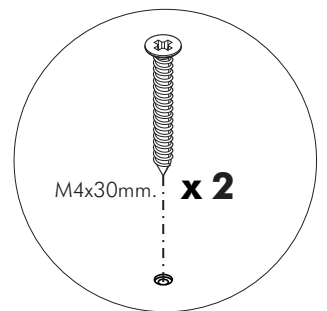
15.



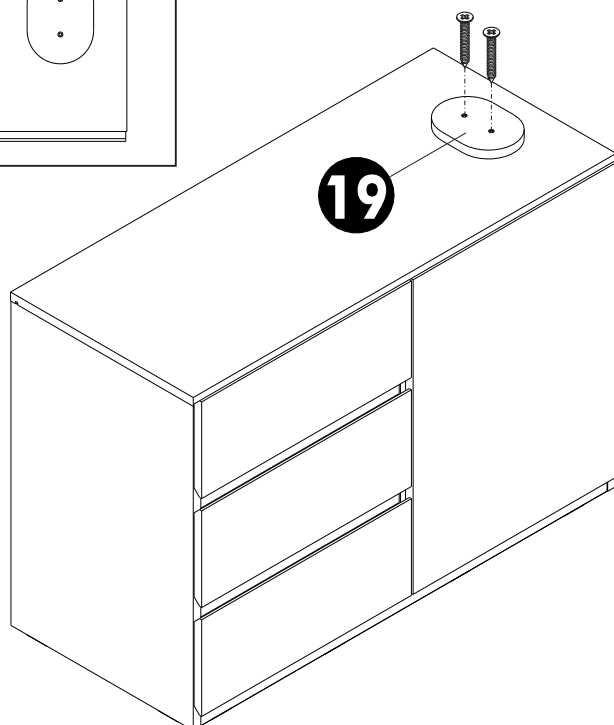
16.



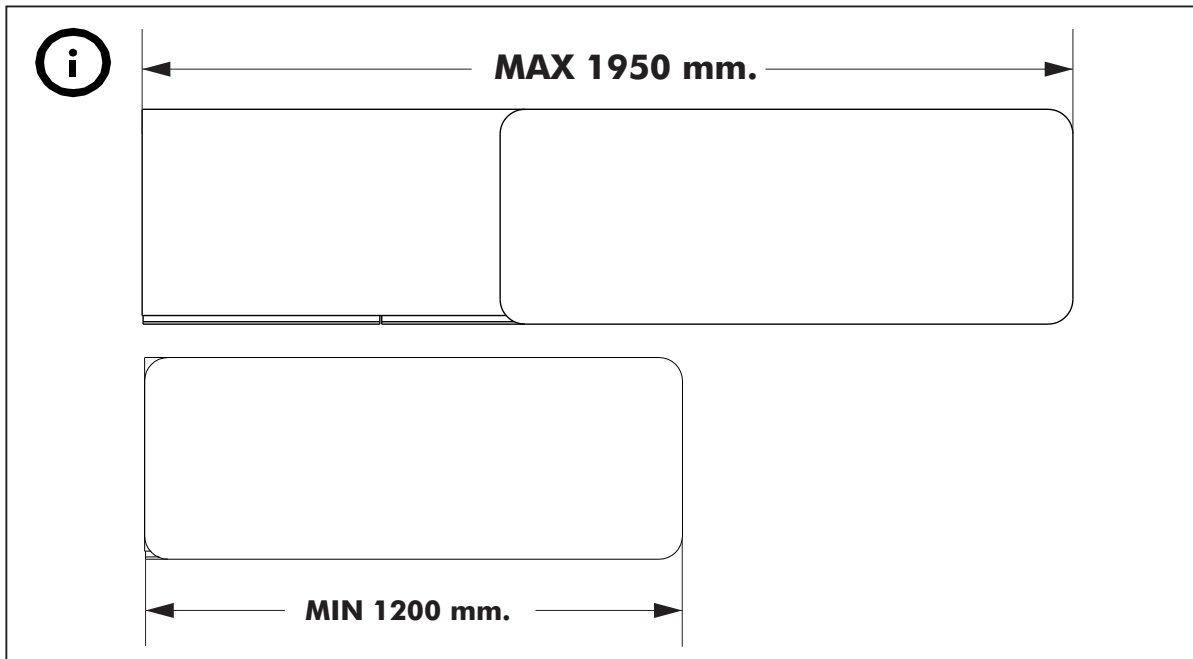
19



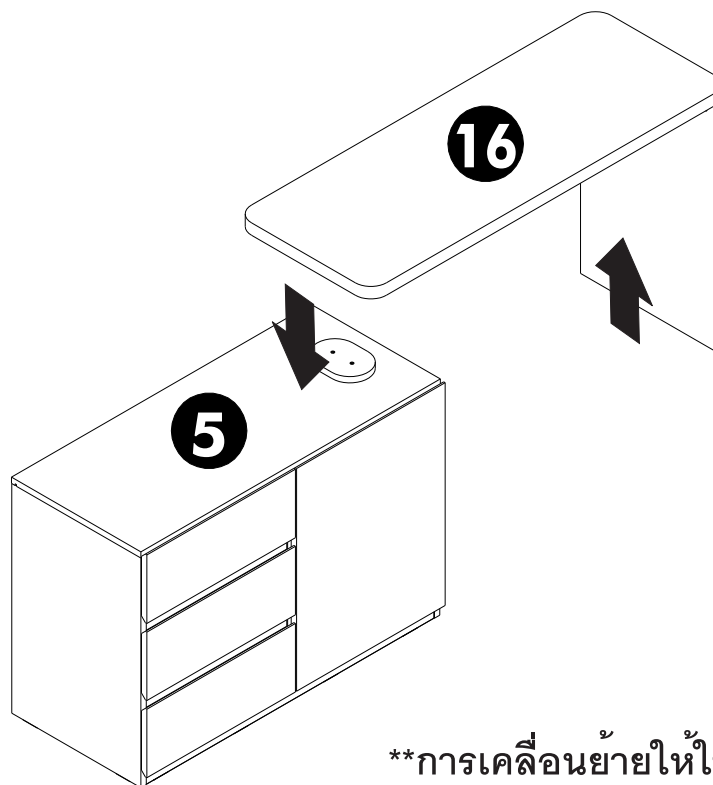
(1.)



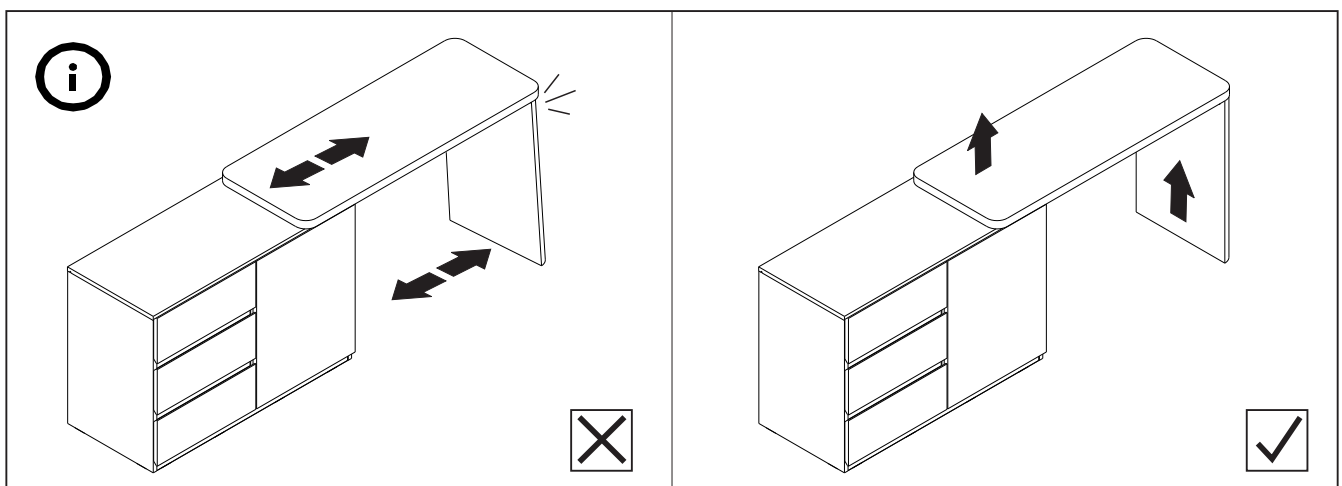
17.



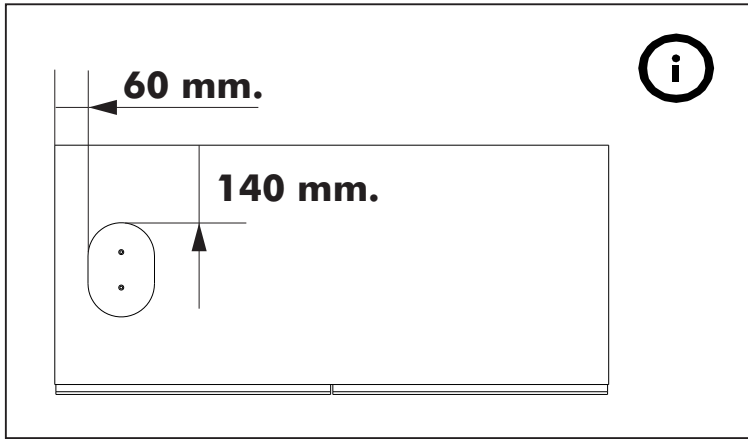
(1.)



****การเคลื่อนย้ายให้ใช้วิธียกเท่านั้นห้ามลาก****



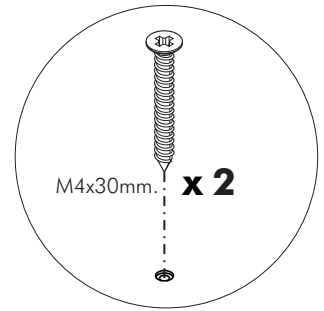
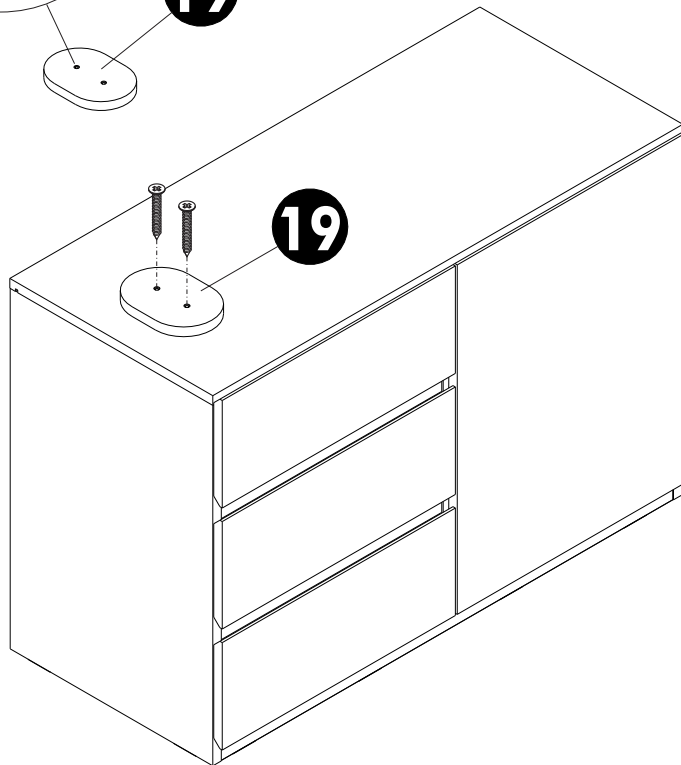
18.



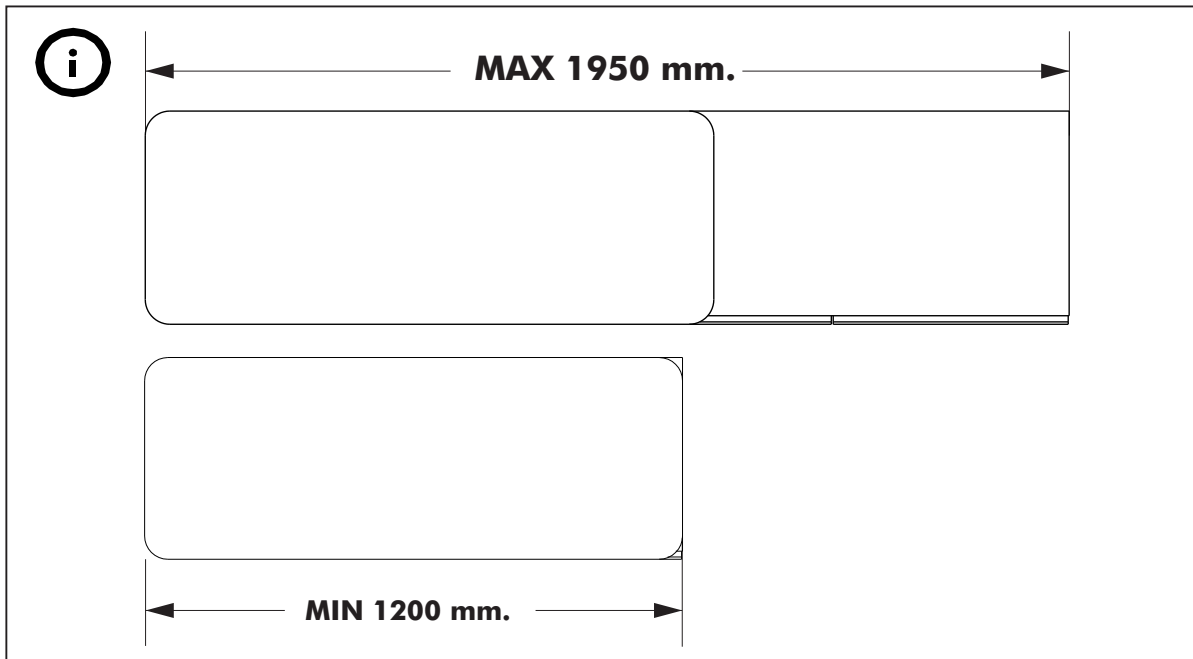
(2.)



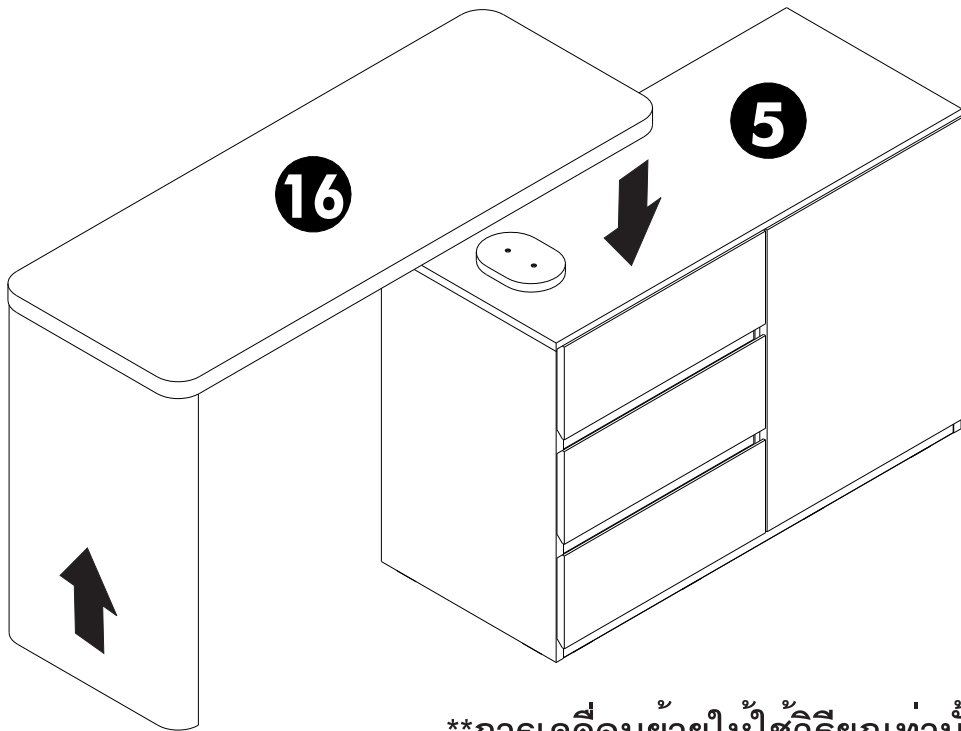
19



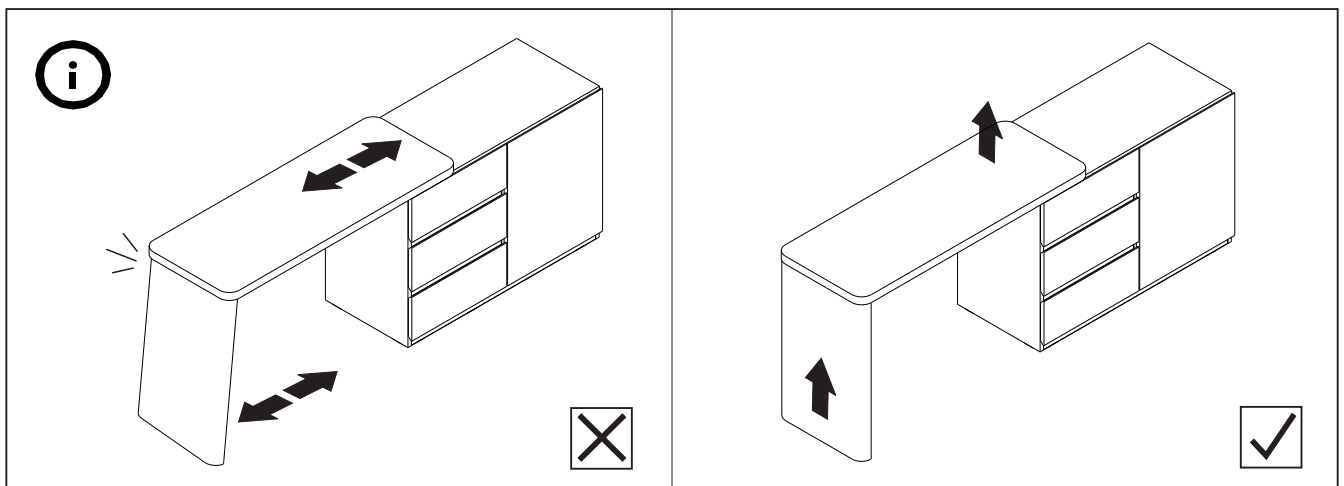
19.



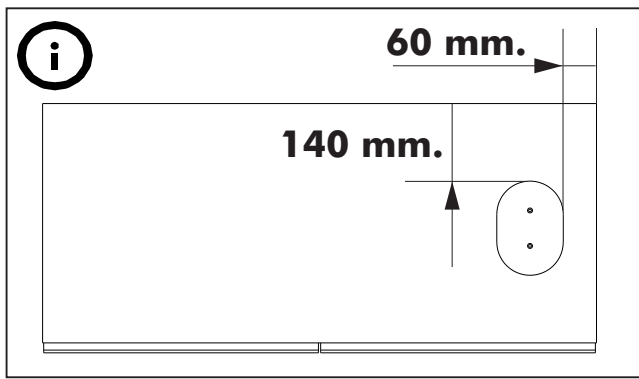
(2.)



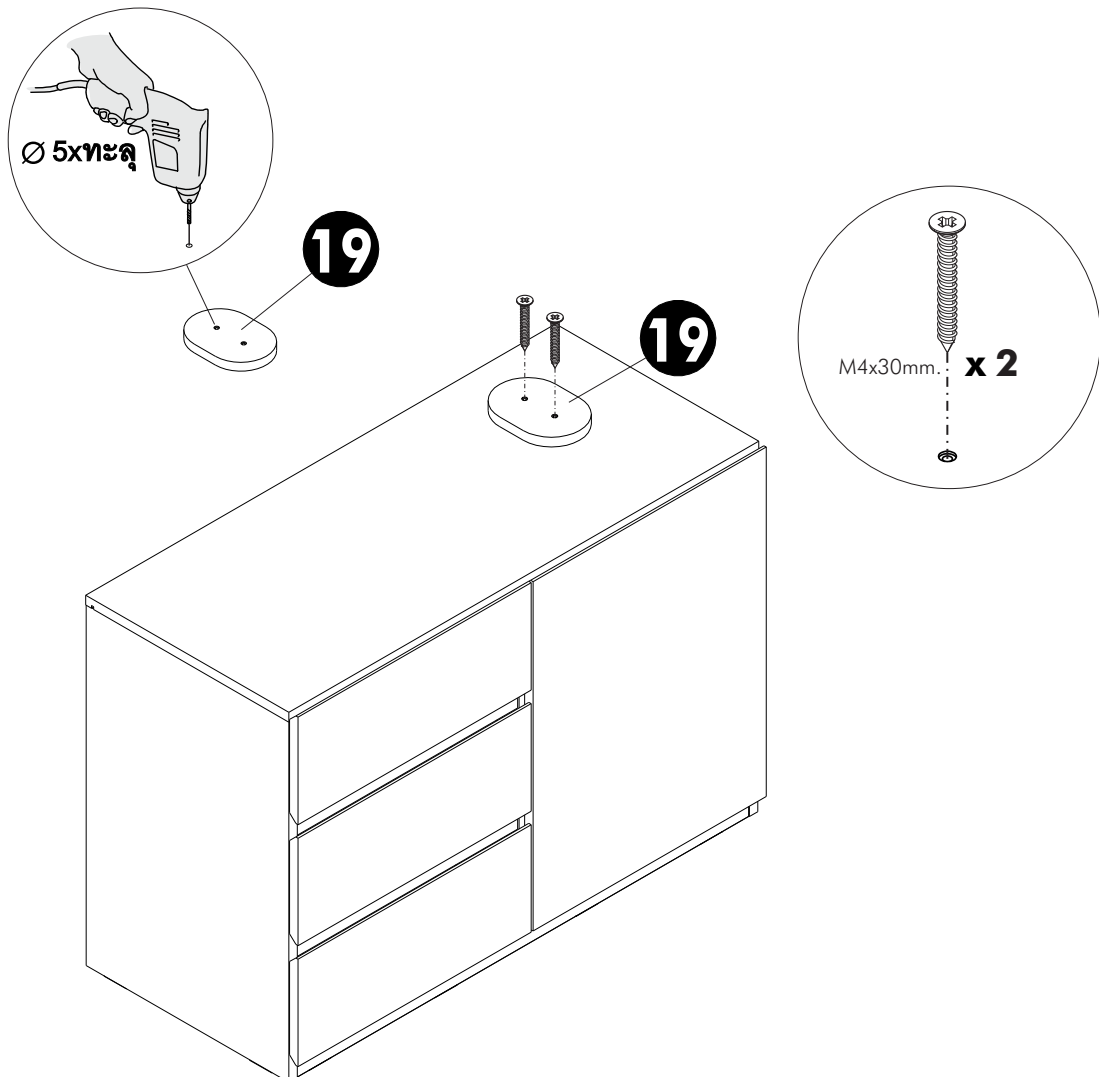
****การเคลื่อนย้ายให้ใช้วิธียกเท่านั้นห้ามลาก****



20.

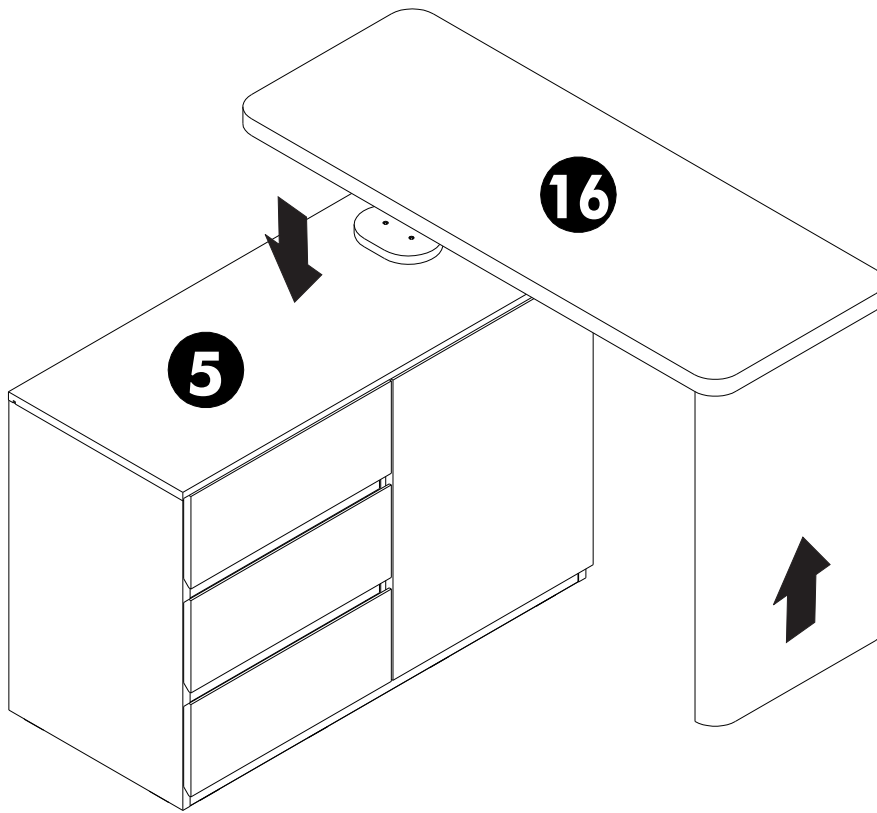


(3.)

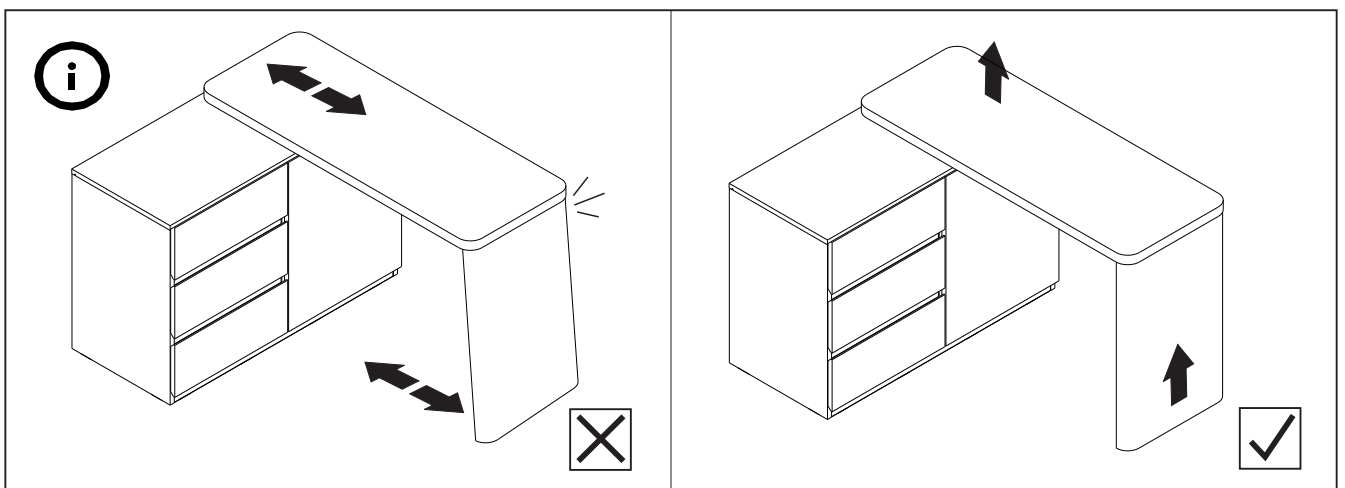


21.

(3.)

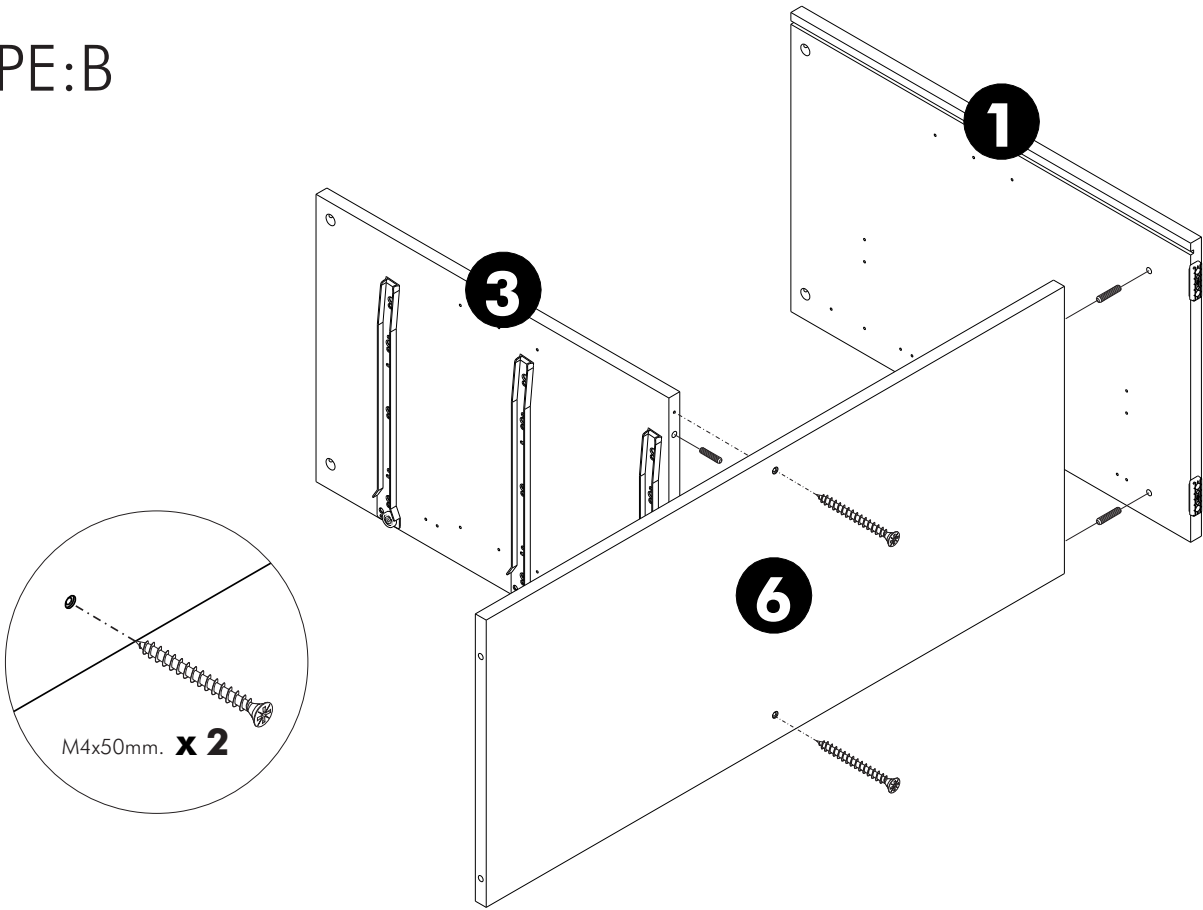


****การเคลื่อนย้ายให้ใช้วิธียกเท่านั้นห้ามลาก****

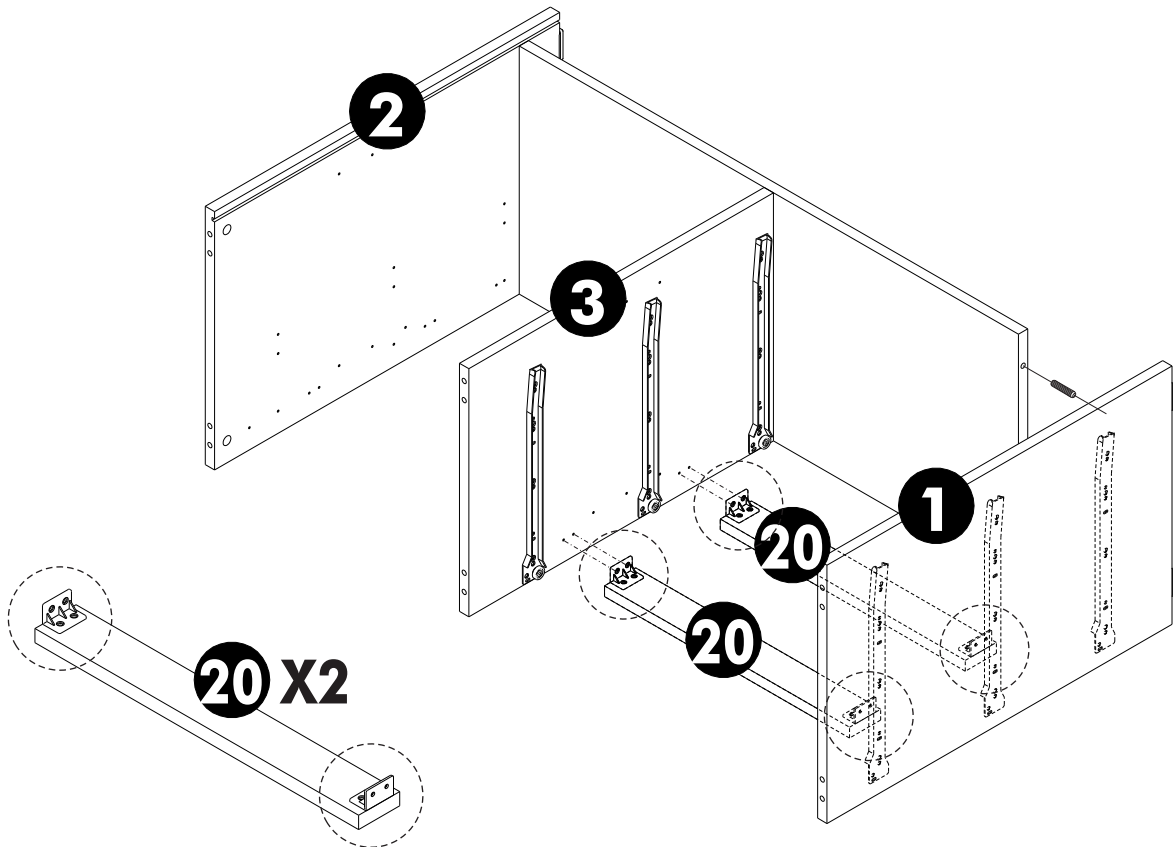


6.

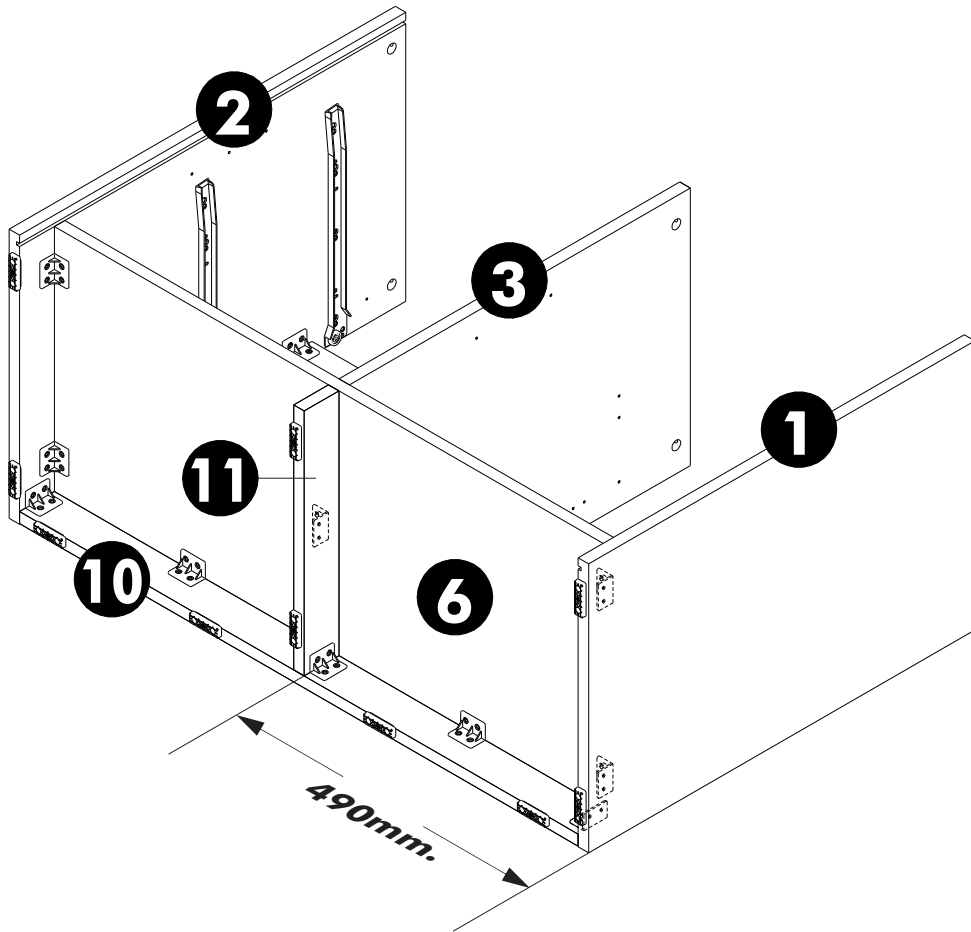
TYPE:B



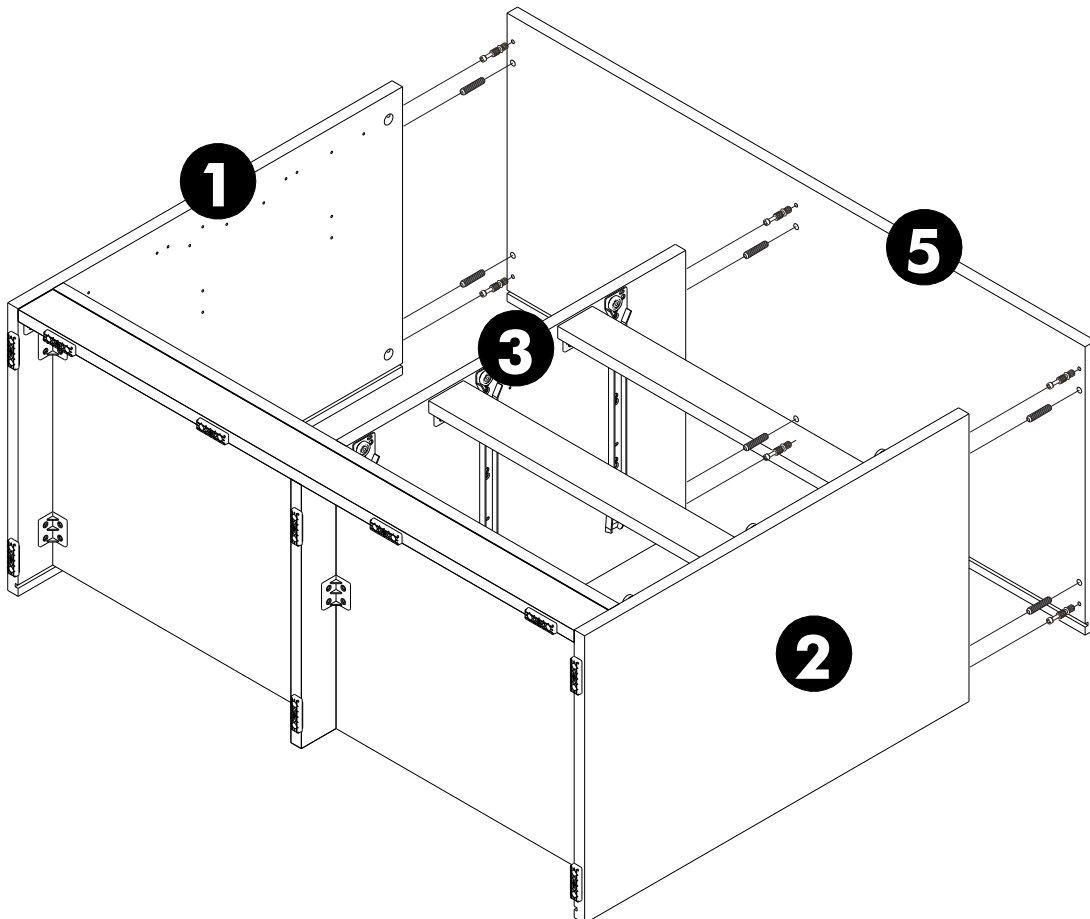
7.



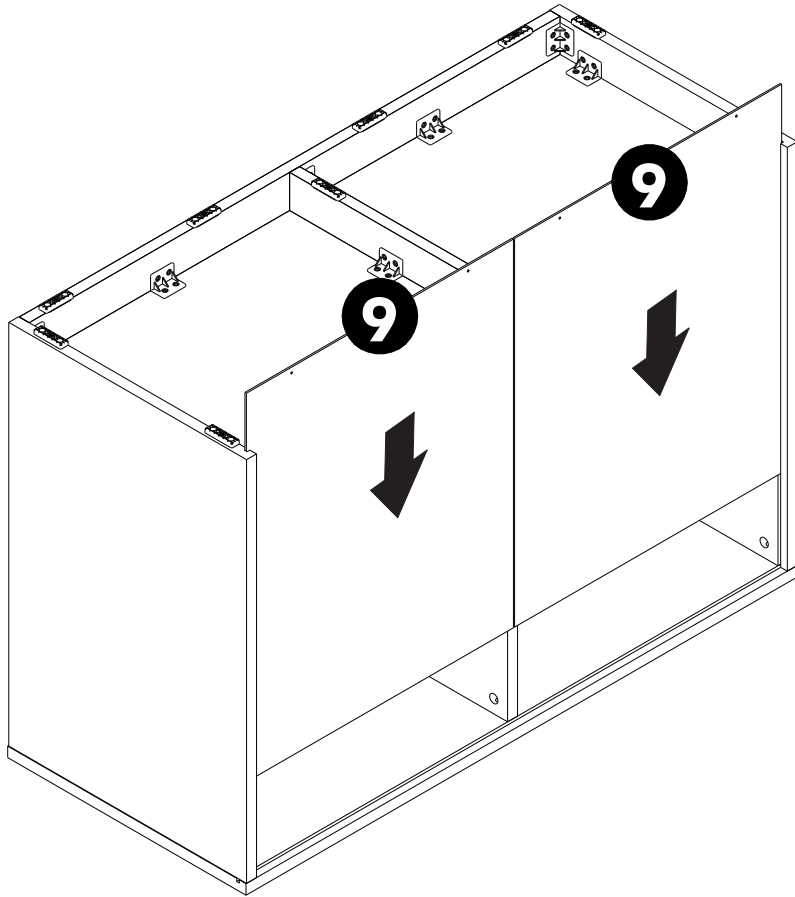
8.



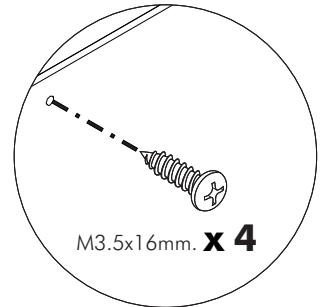
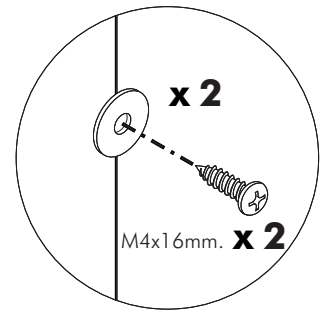
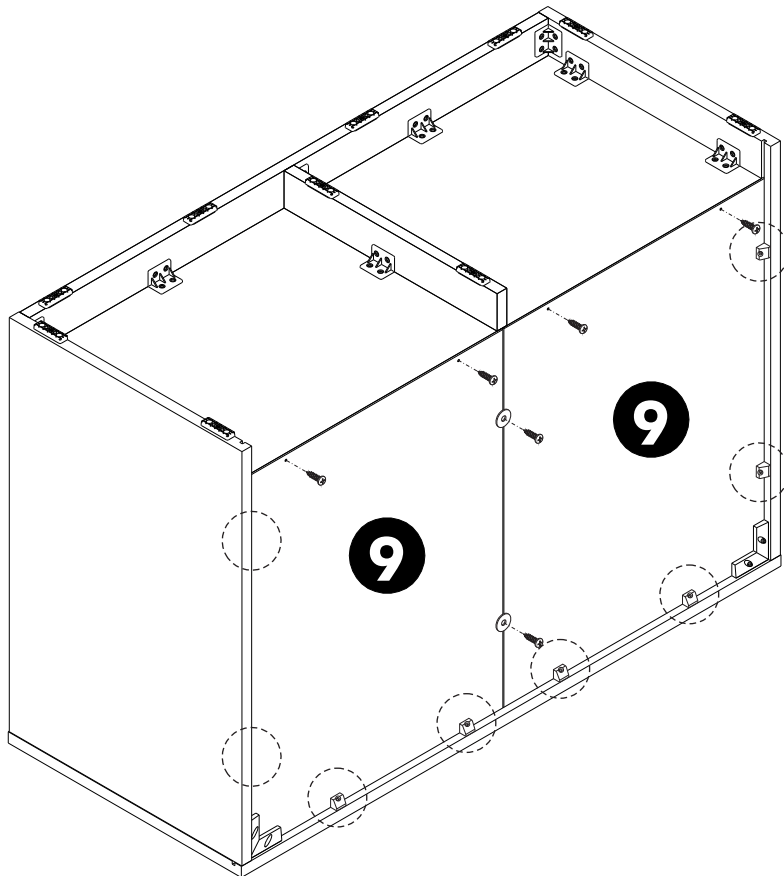
9.



10.



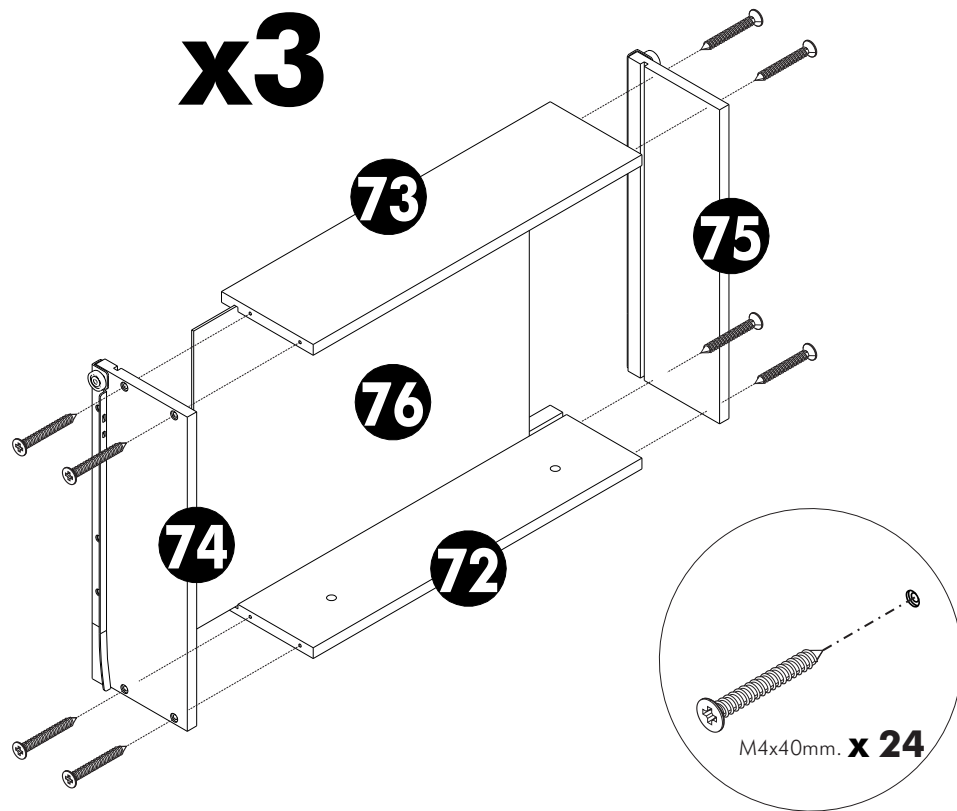
11.



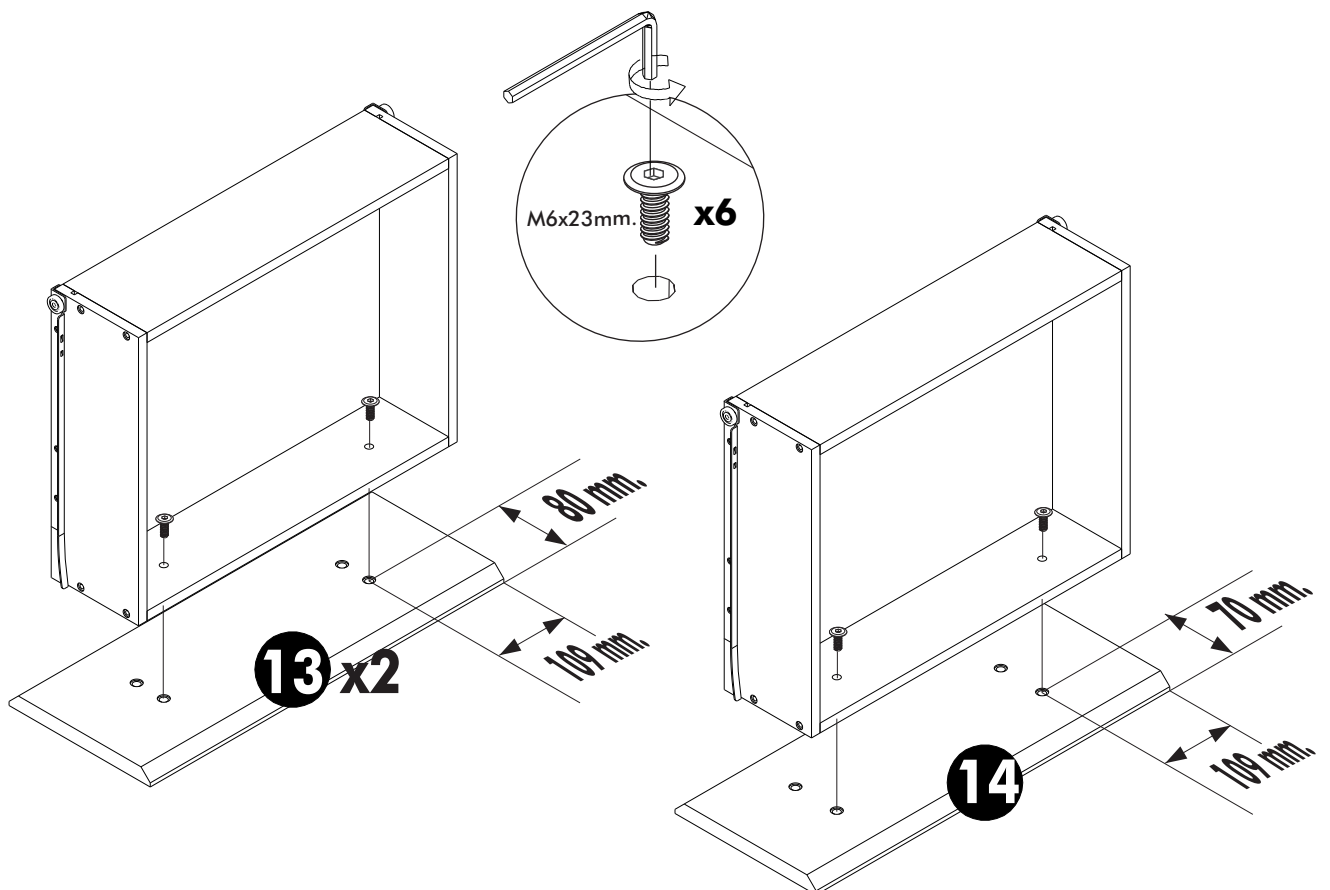
12.

ASSEMBLY

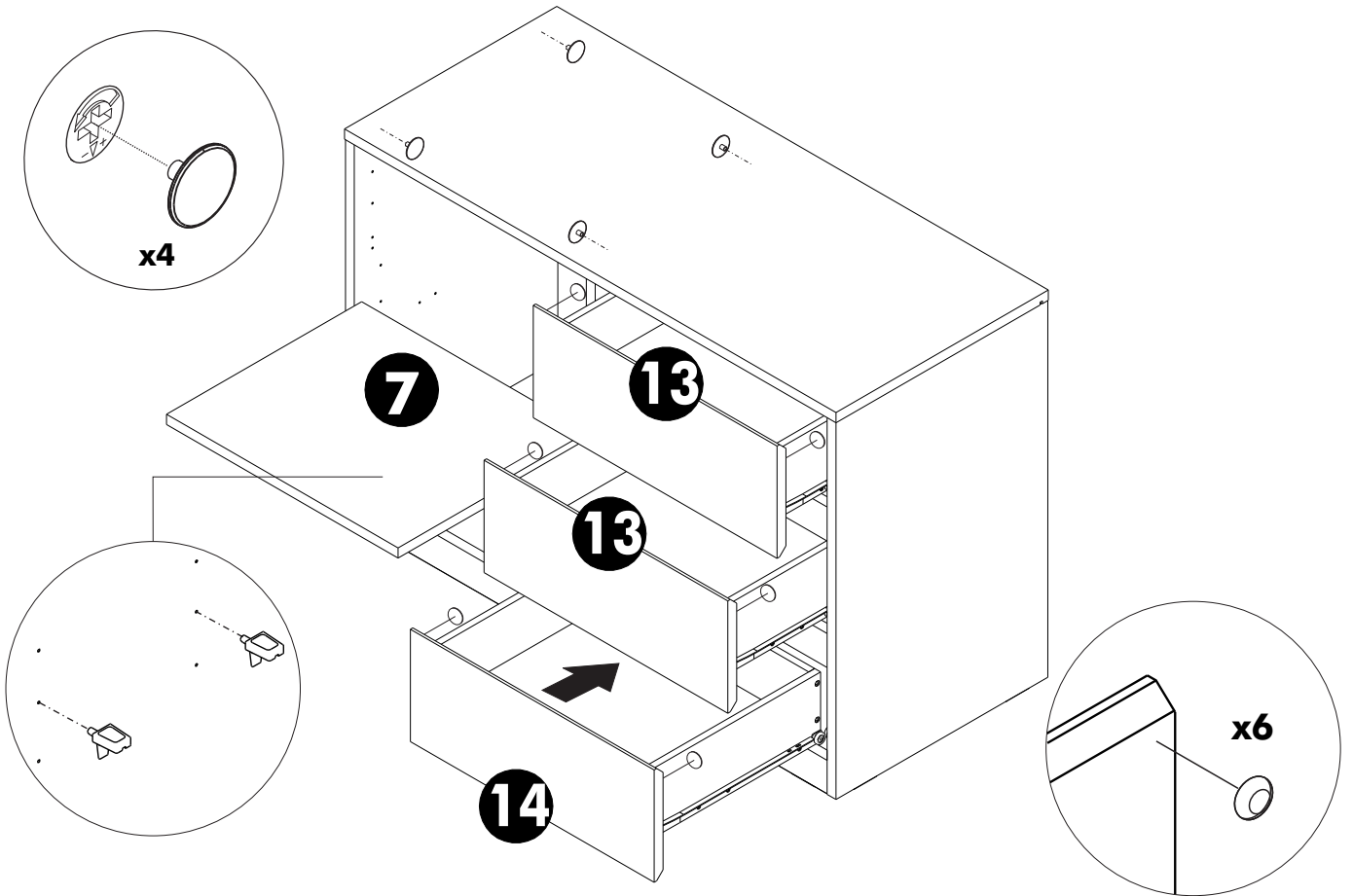
-DRAWER SET



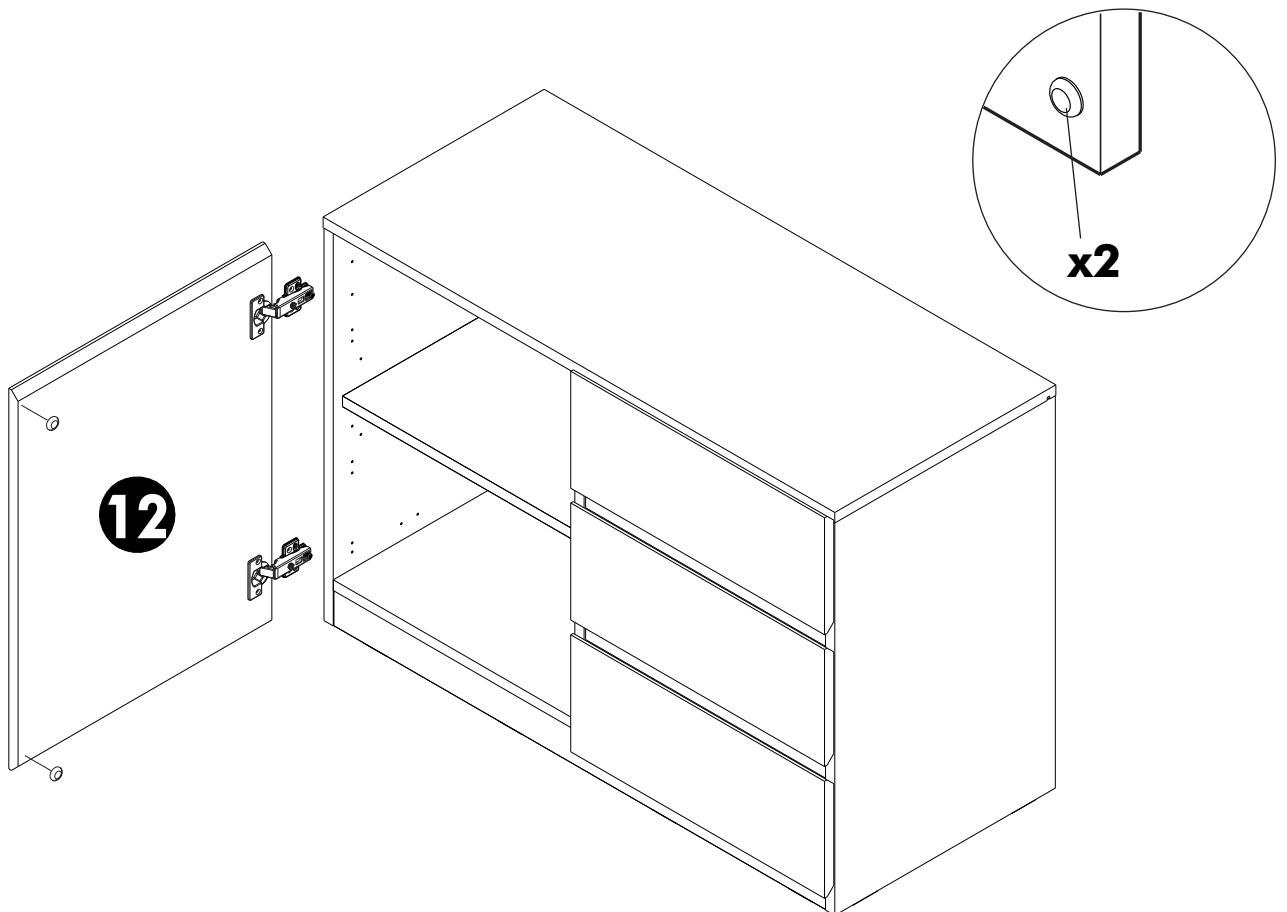
13.



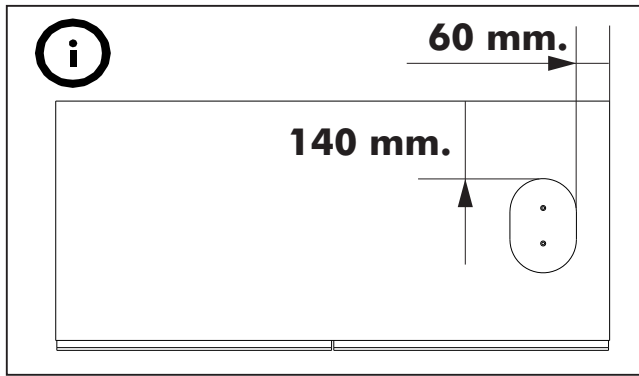
14.



15.



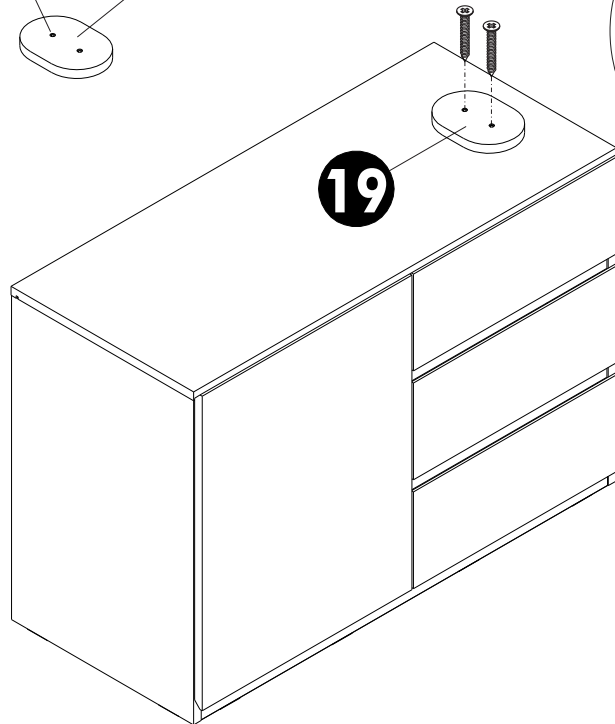
16.



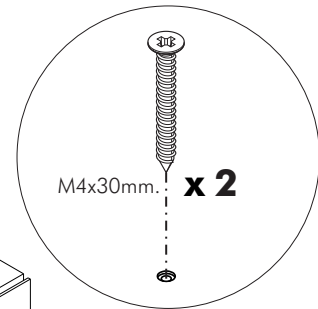
(1.)



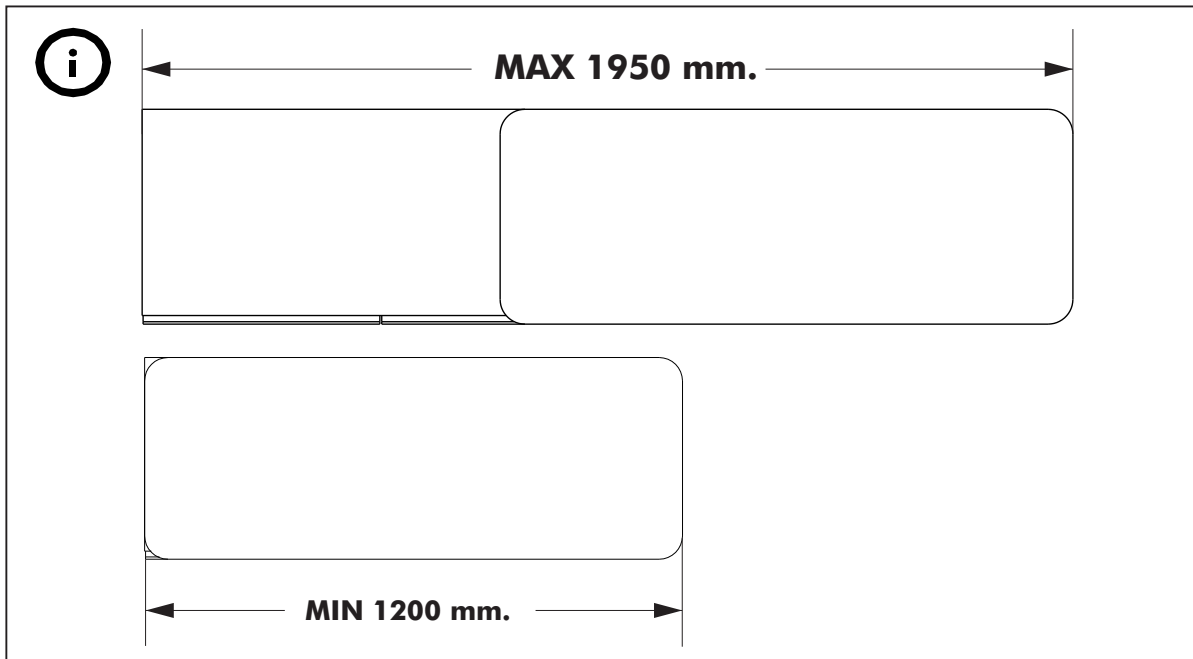
19



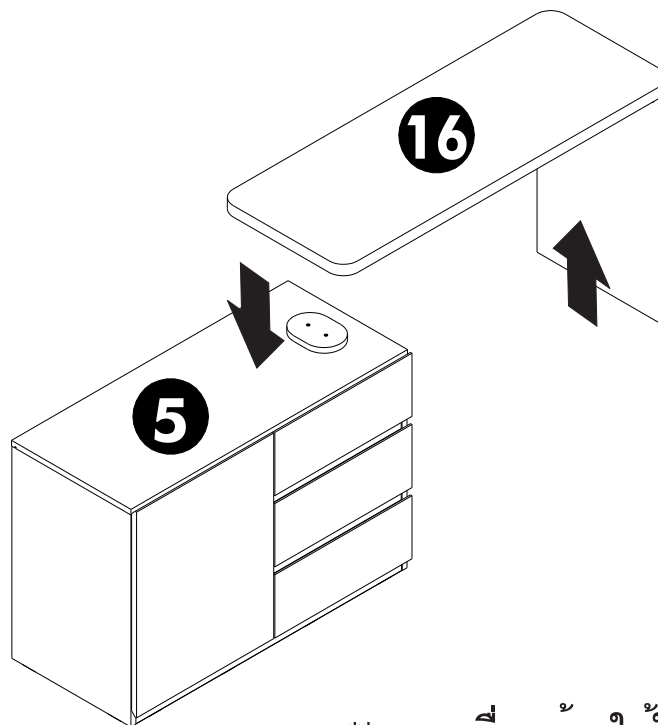
19



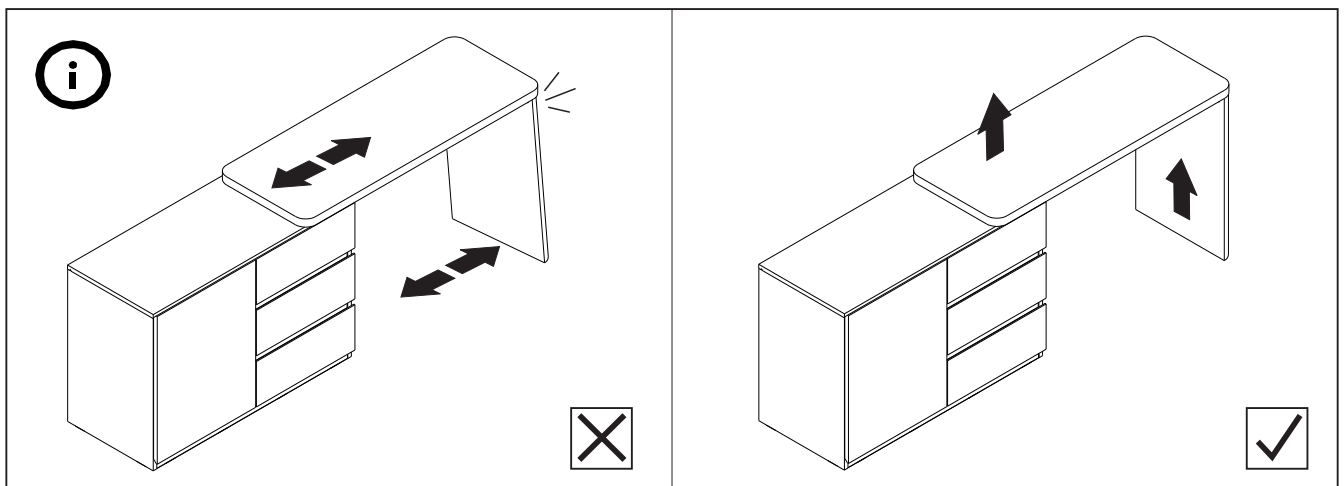
17.



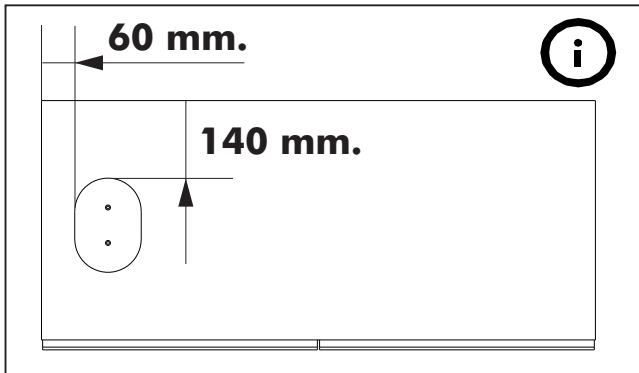
(1.)



****การเคลื่อนย้ายให้ใช้วิธียกเท่านั้นห้ามลาก****



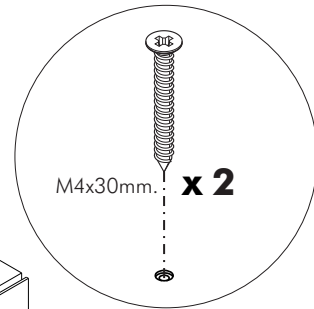
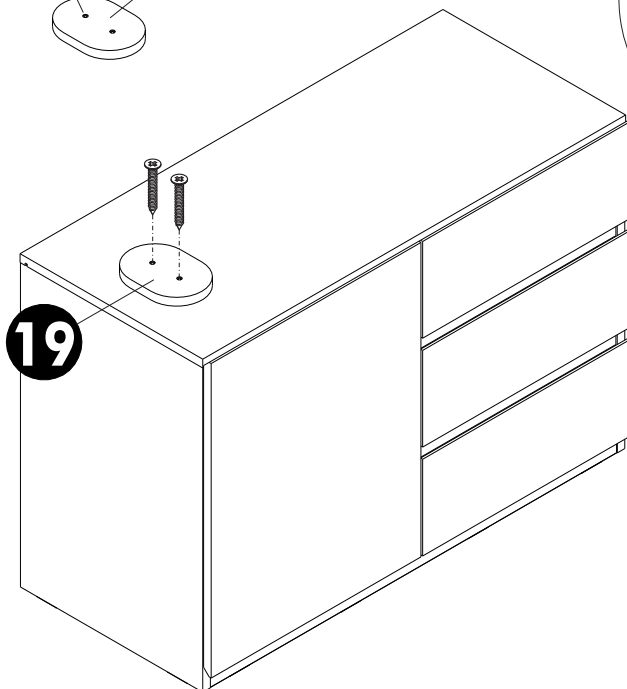
18.



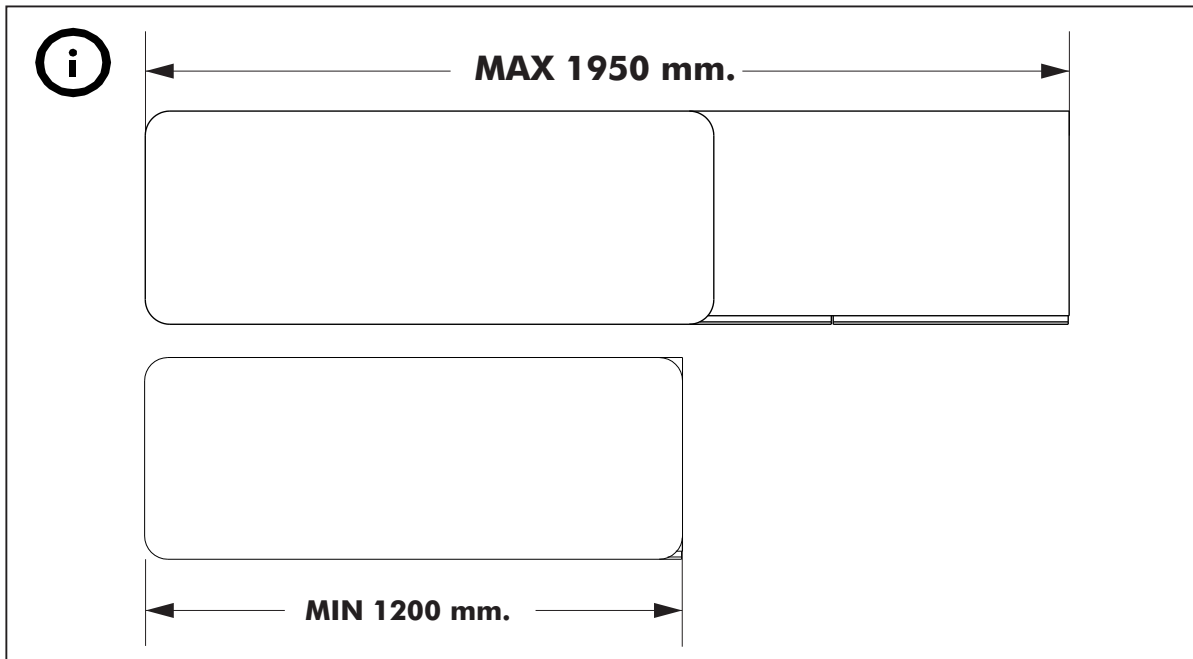
(2.)



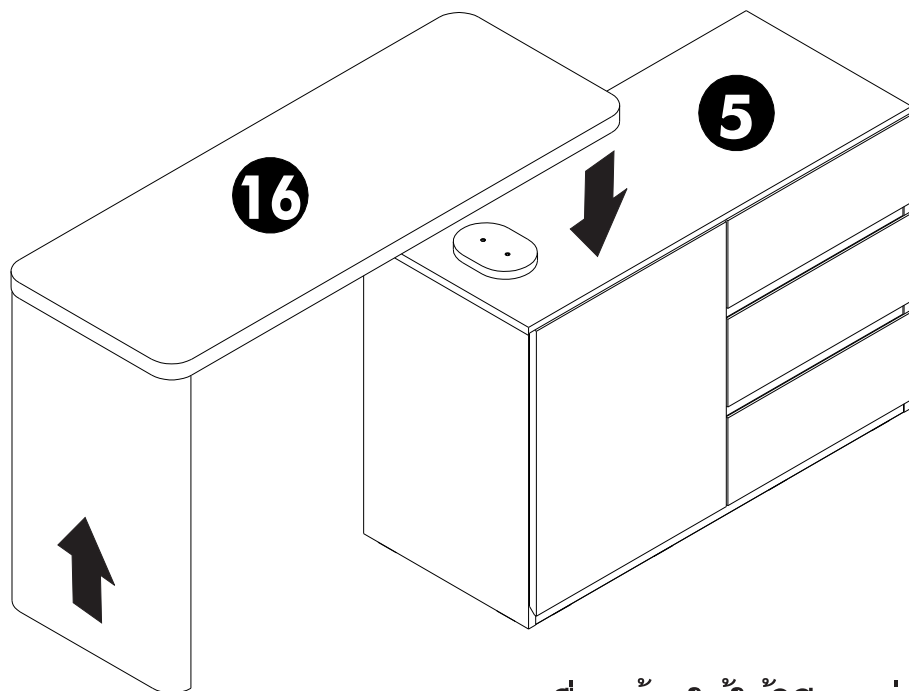
19



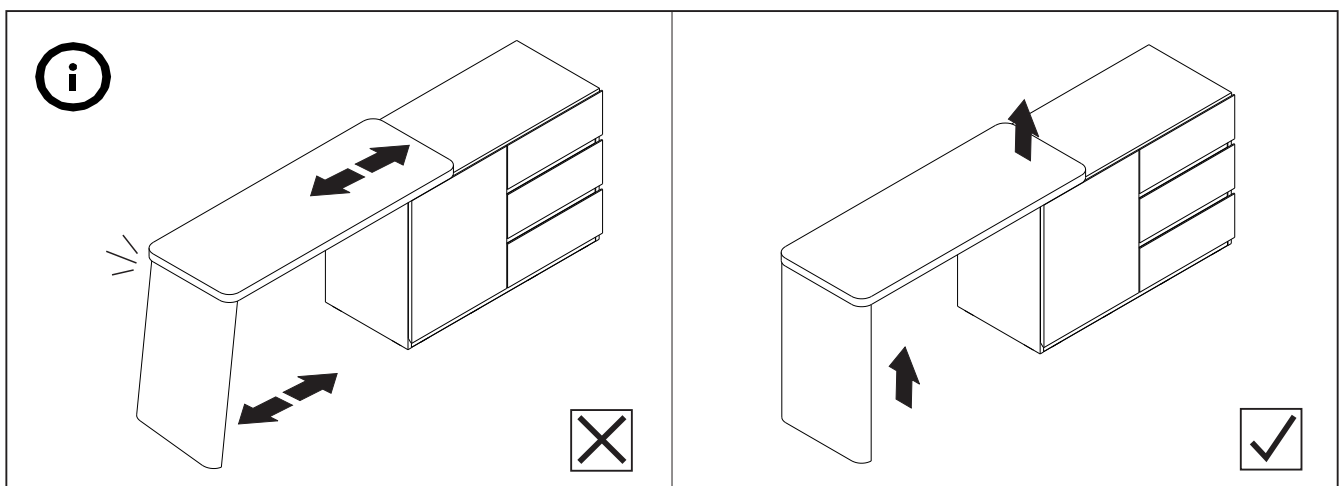
19.



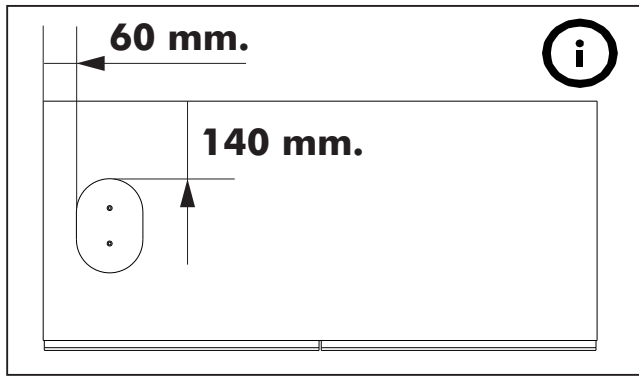
(2.)



****การเคลื่อนย้ายให้ใช้วิธียกเท่านั้นห้ามลาก****



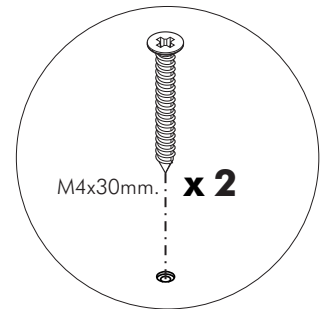
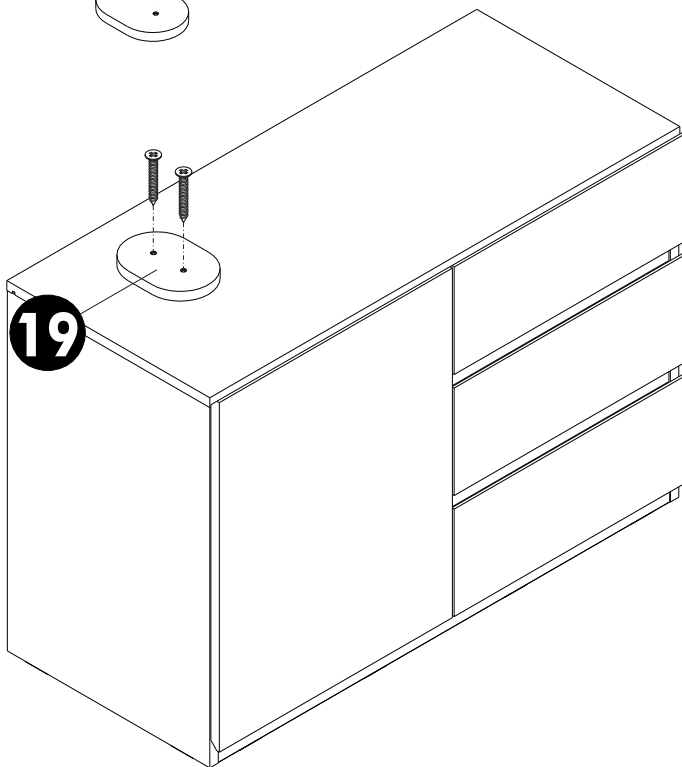
20.



(3.)

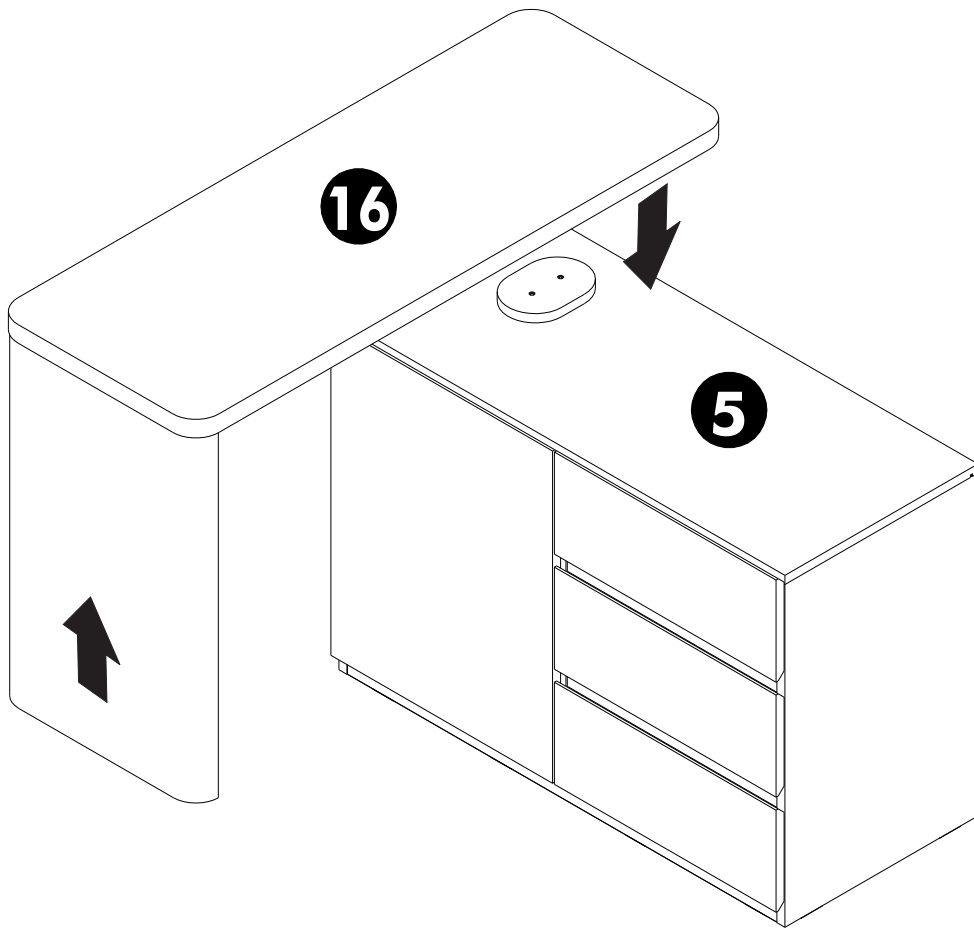


19



21.

(3.)



****การเคลื่อนย้ายให้ใช้วิธียกเท่านั้นห้ามลาก****

