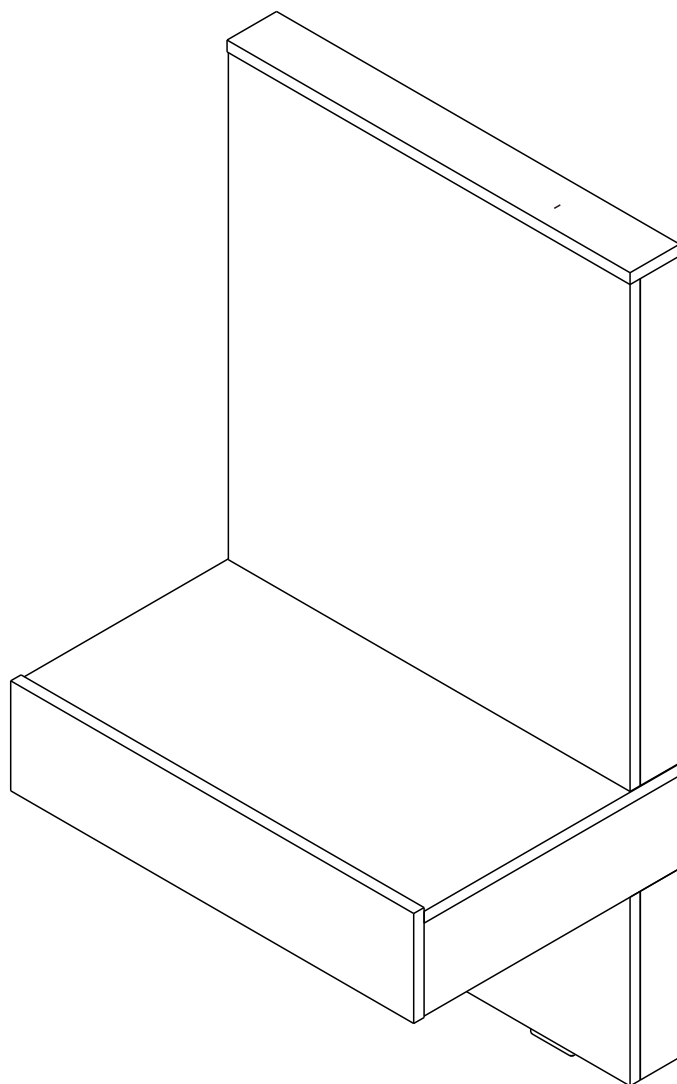


# VALUX

**Night Table 62CM. WT**



# CONNECT SYSTEM

**1**

**2**

(Connecting bolts)

**3**

**WHEN FITTING CAMS**  
 ENSURE STARTING POSITION IS CORRECT  
 BEFORE YOU INSERT CONNECTING BOLT  
 TURN CLOCKWISE UNTIL SECURE

✓				✗
	↑ <b>CORRECT</b>	↓ <b>WRONG</b>	← <b>WRONG</b>	

M4x16mm.

**i**

40mm.

☹️

☒

EQ

😊

☑️

M3.5x13mm.

M3.5x13mm.

M3.5x13mm.

**1**

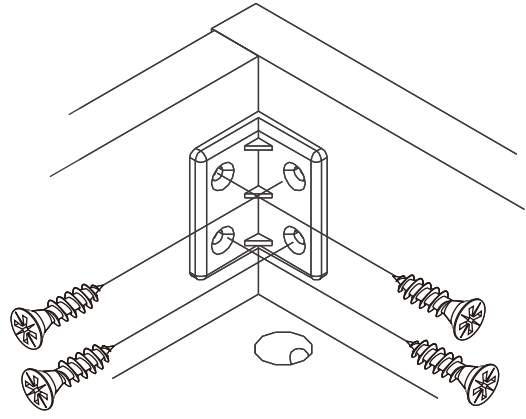
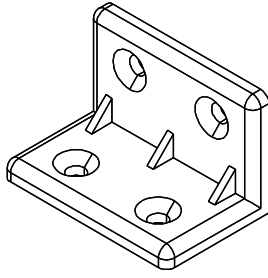
Use these holes

**2**

Use these holes



M4x16mm.



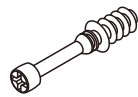
# HARDWARE

## -BODY SET



#8x35

**x 24**



**x 22**

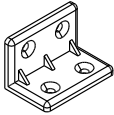


**x 22**

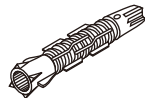


M4x16mm.

**x 72**



**x 16**

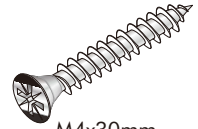


**x 3**



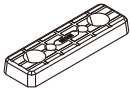
M5x70mm.

**x 3**



M4x30mm.

**x 5**



**x 4**



No.1

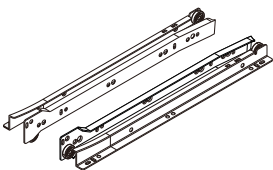
**x 2**



M4x16mm.

**x 2**

## -DRAWER SET

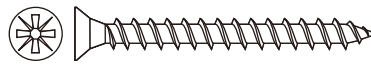


**x 1**



M3.5x13mm.

**x 14**



M4x40mm.

**x 10**



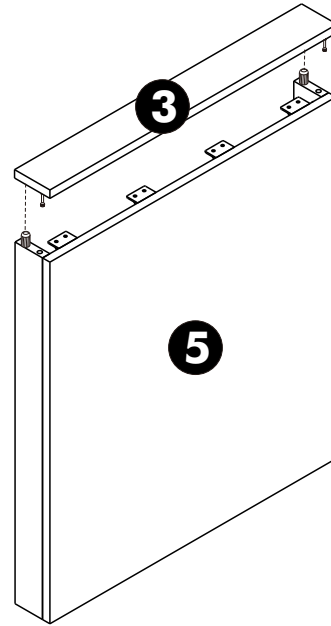
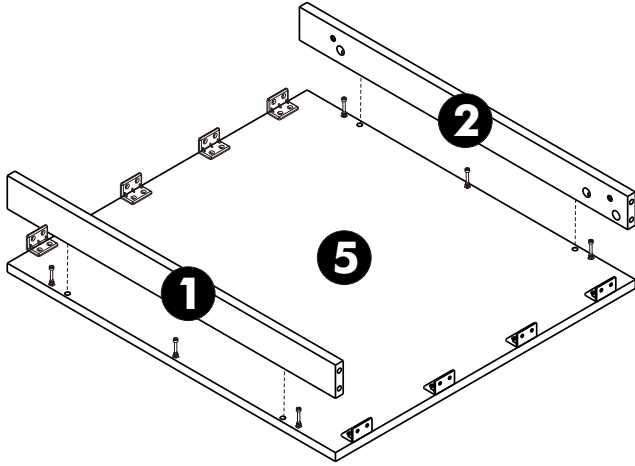
TFL4 M6x23

**x 2**

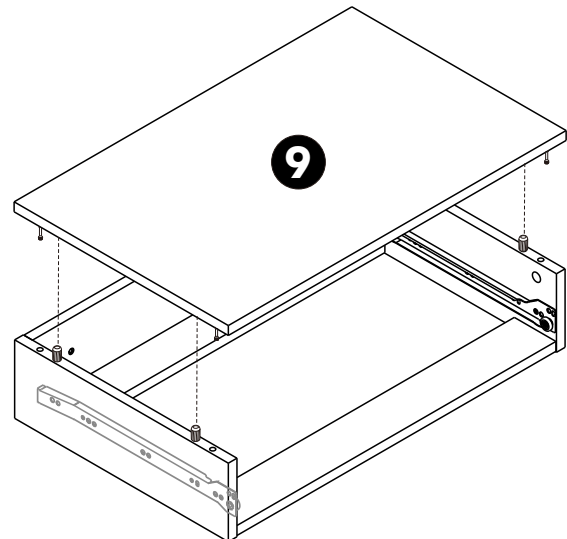
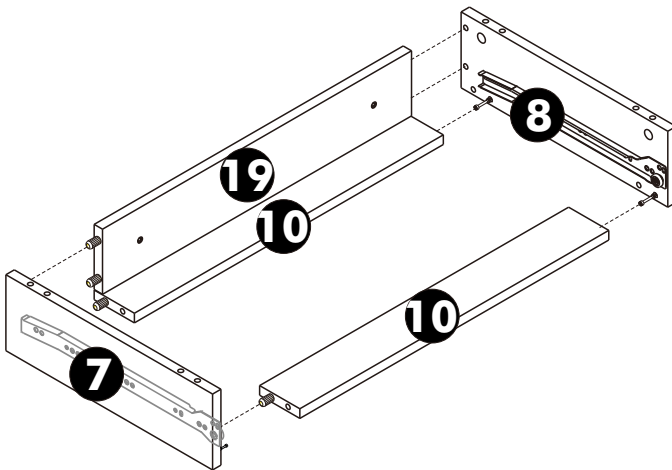
# ASSEMBLY

-BODY SET

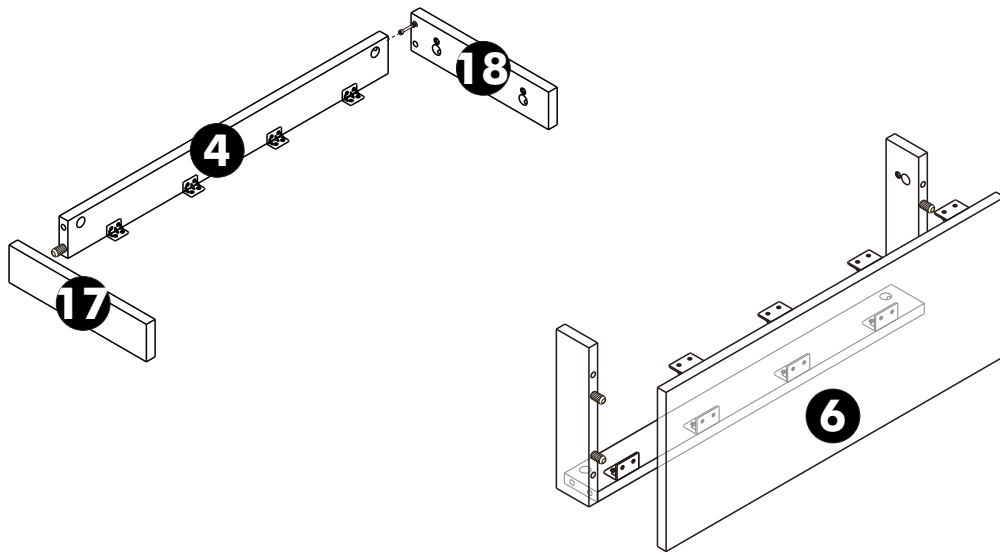
1.



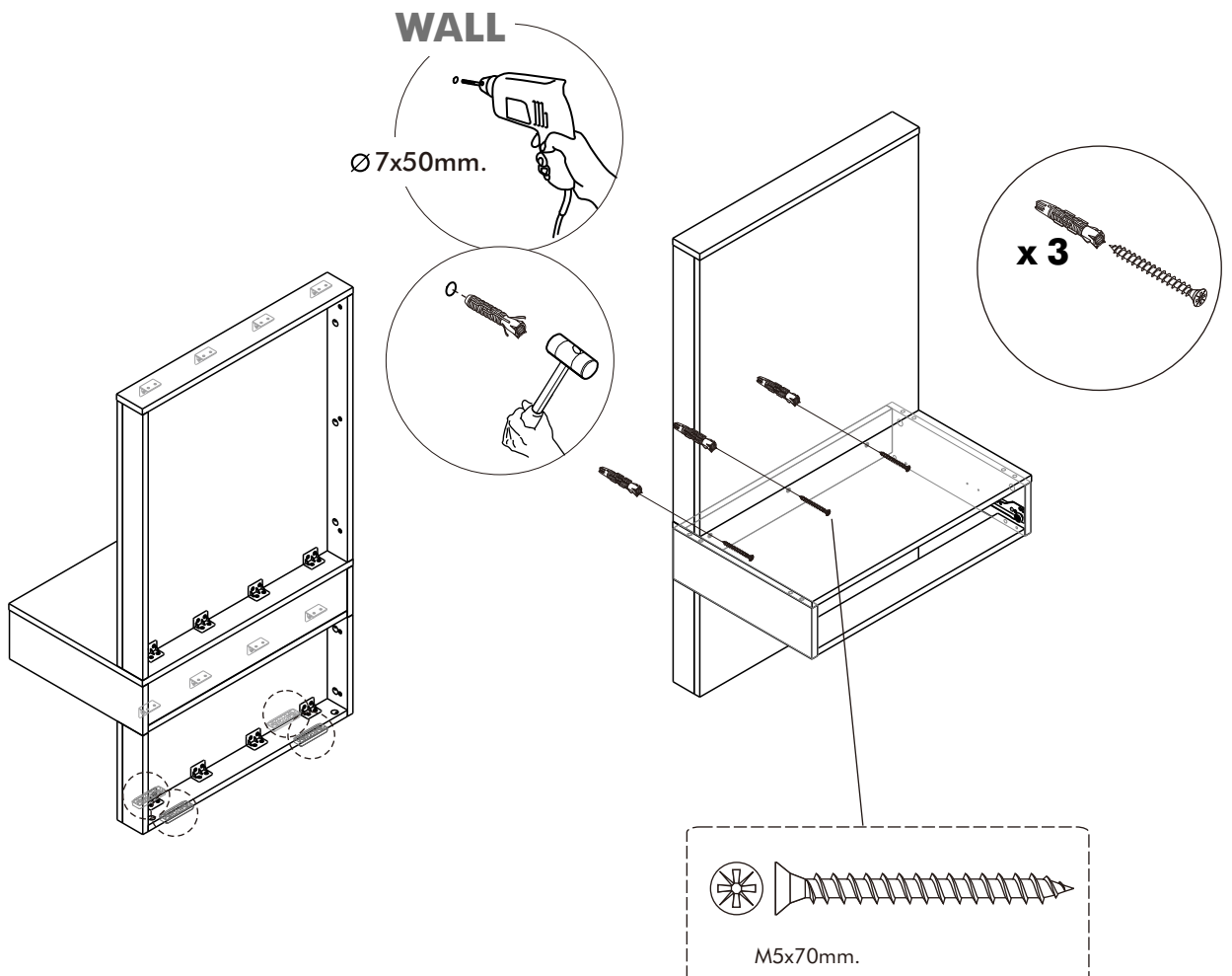
2.



**3.**



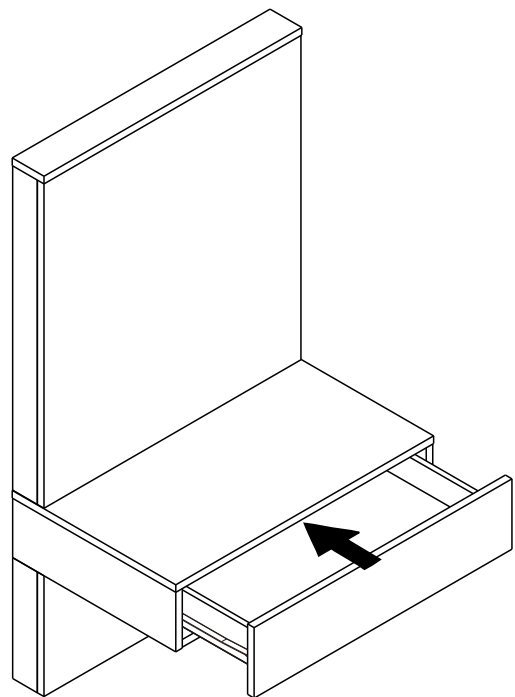
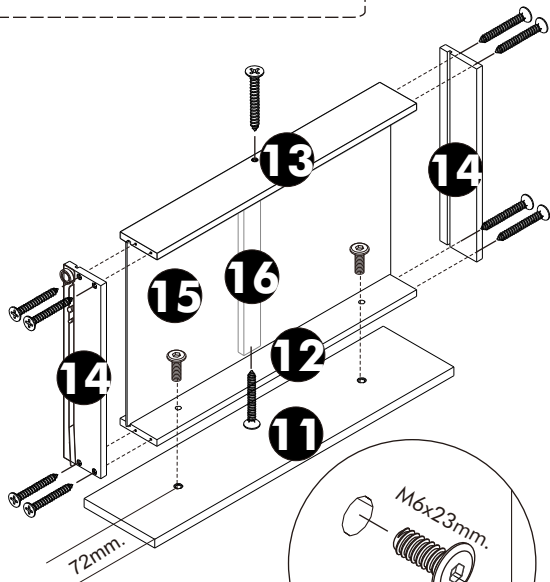
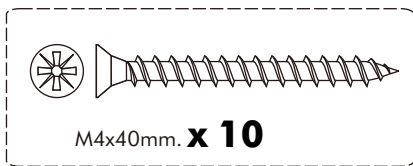
**4.**



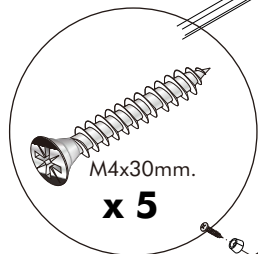
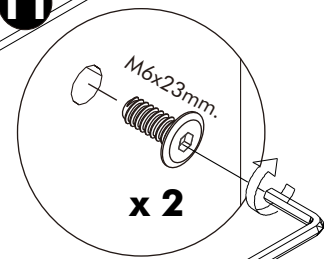
# 5.

## ASSEMBLY

-DRAWER SET



# 4.



**R**

**L**

