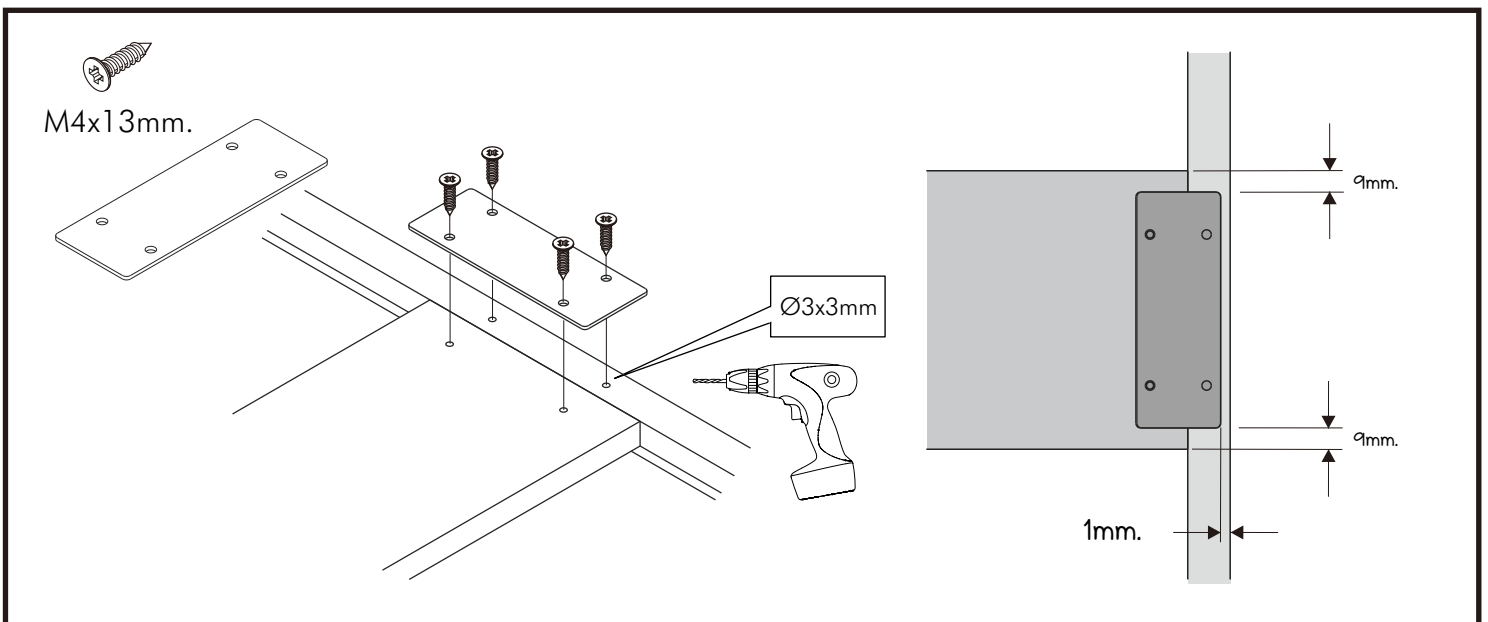
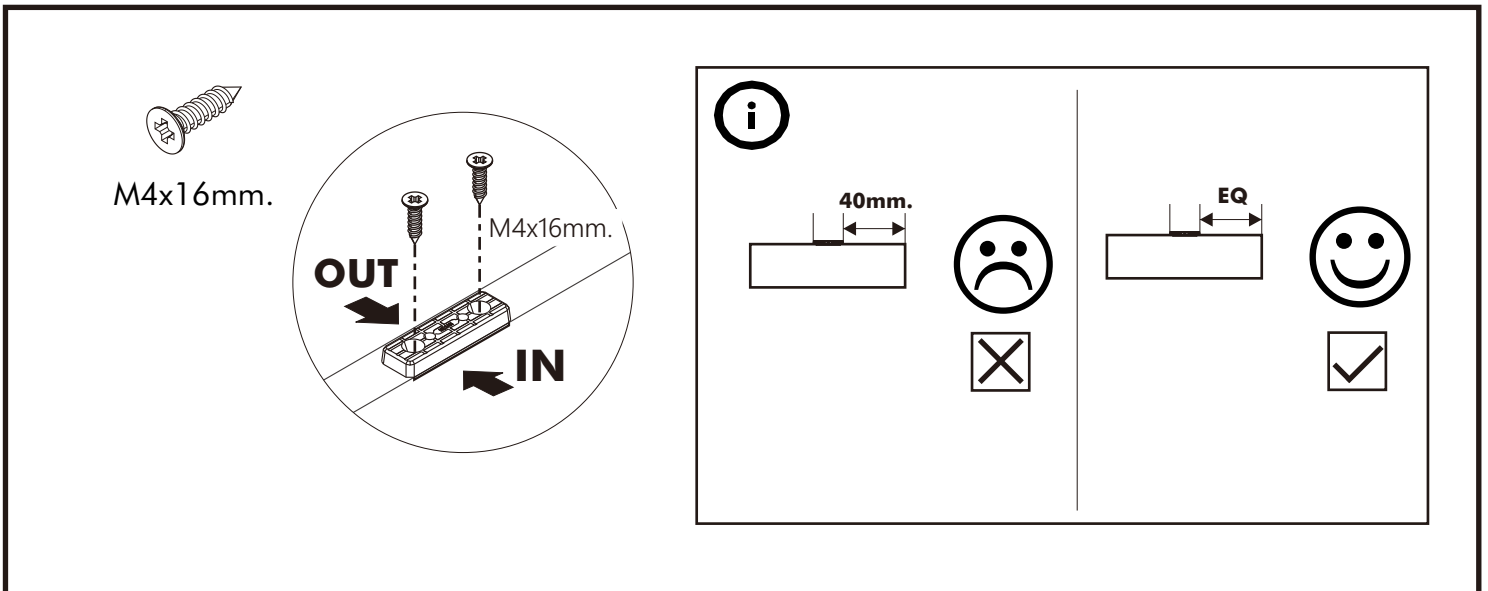
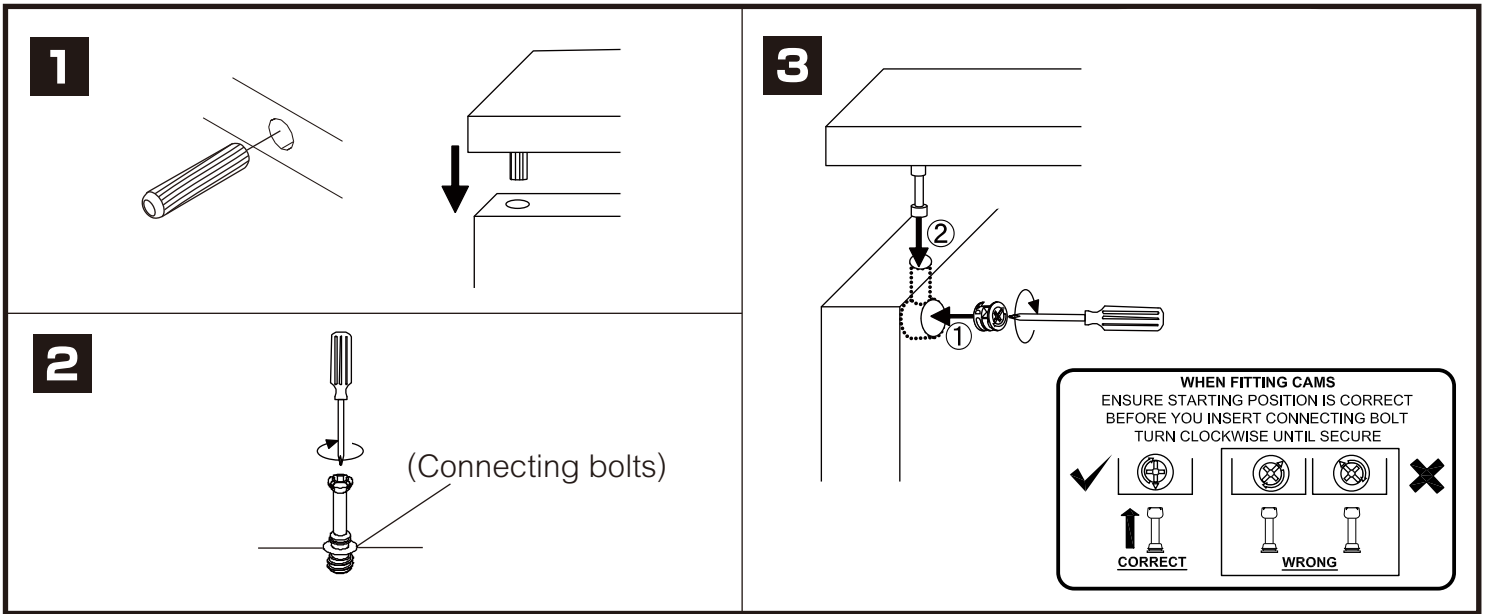


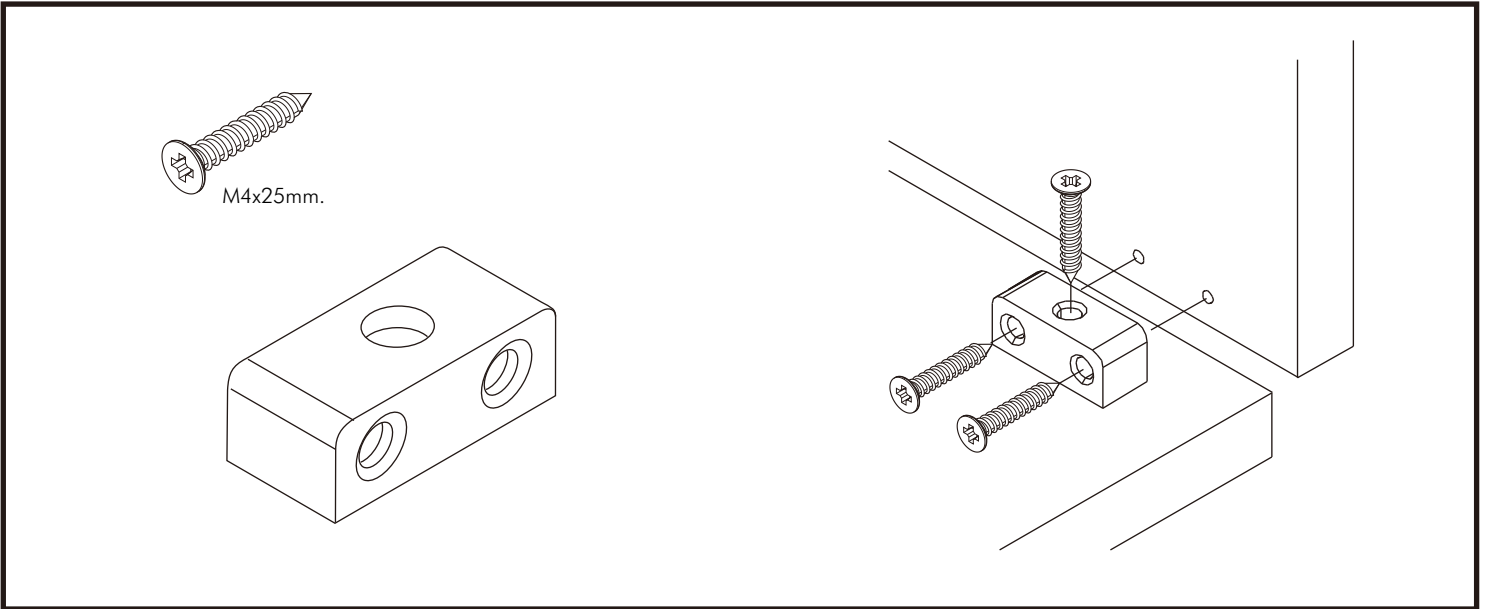
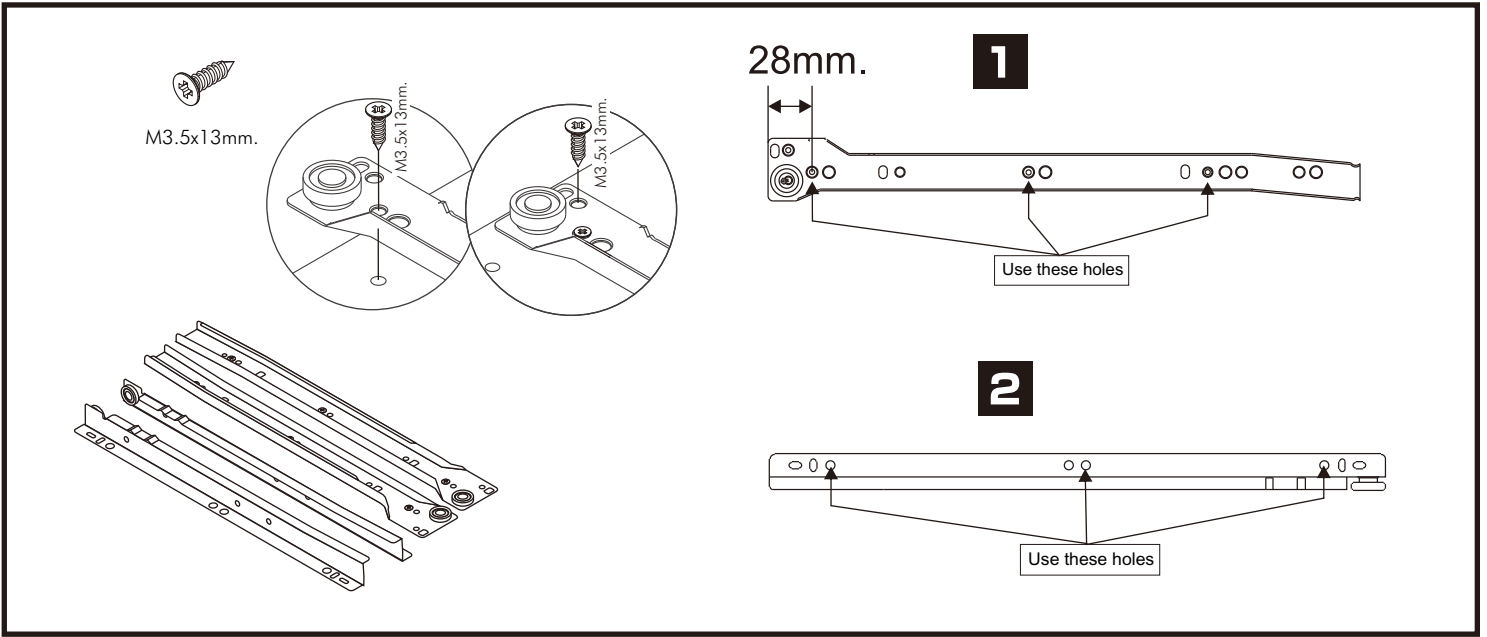
VOW-P

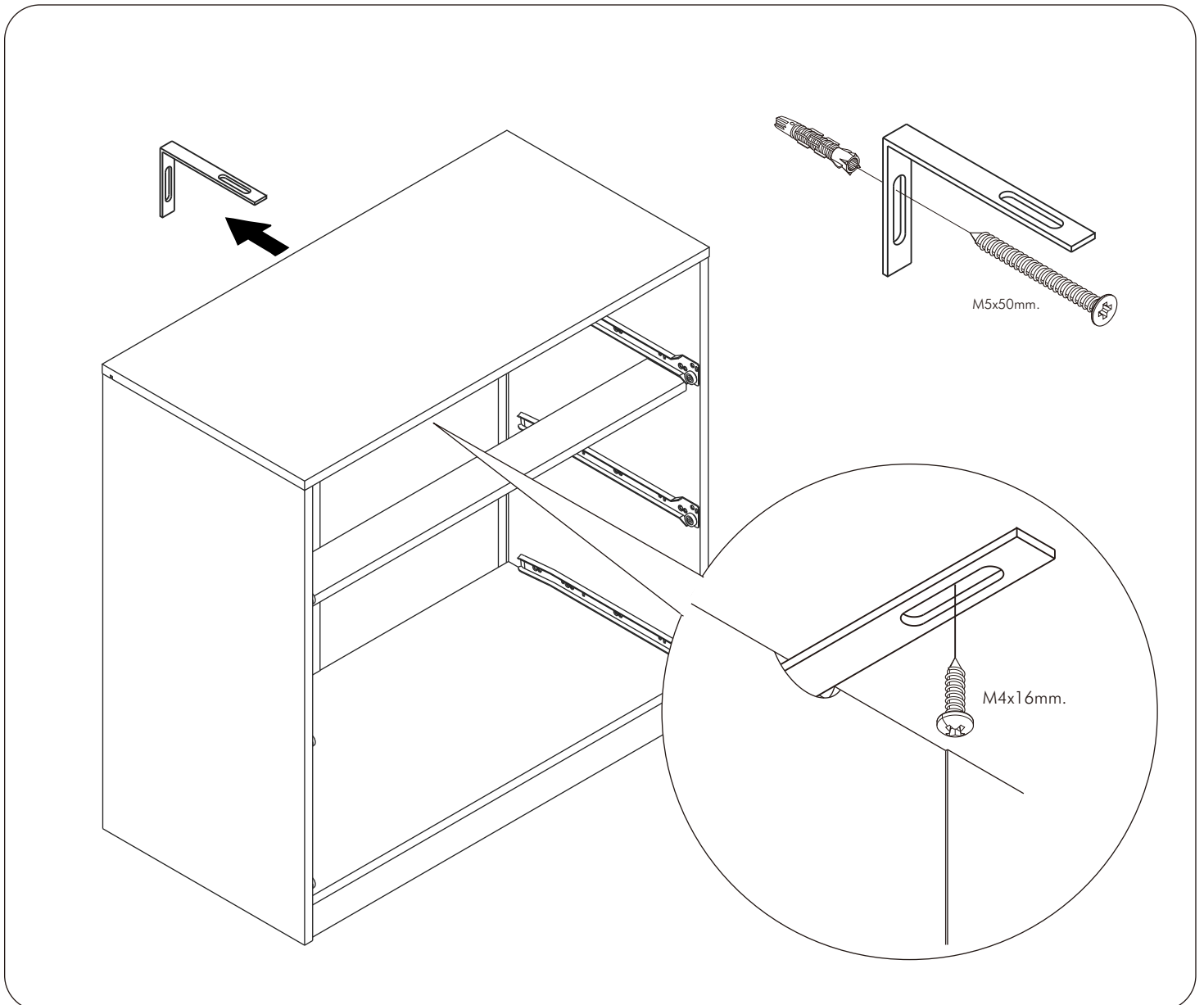
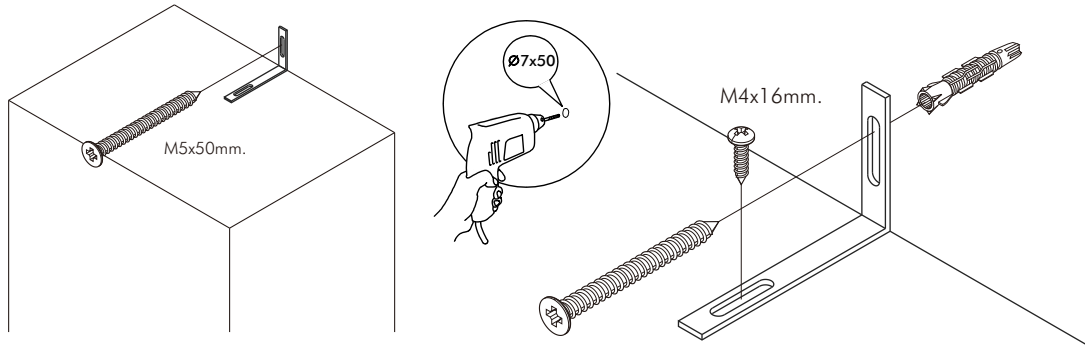
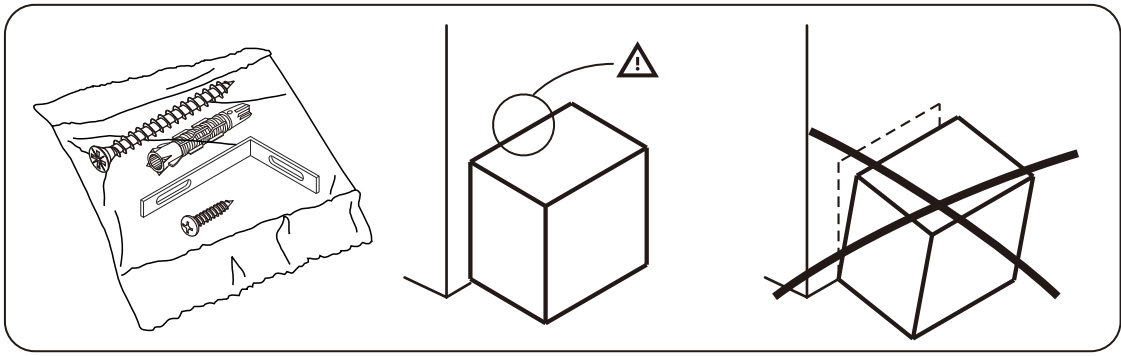
Chest 4 drawer



CONNECT SYSTEM

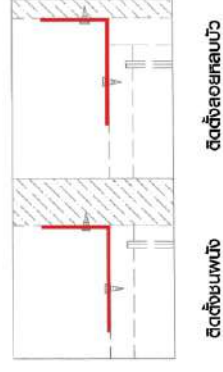
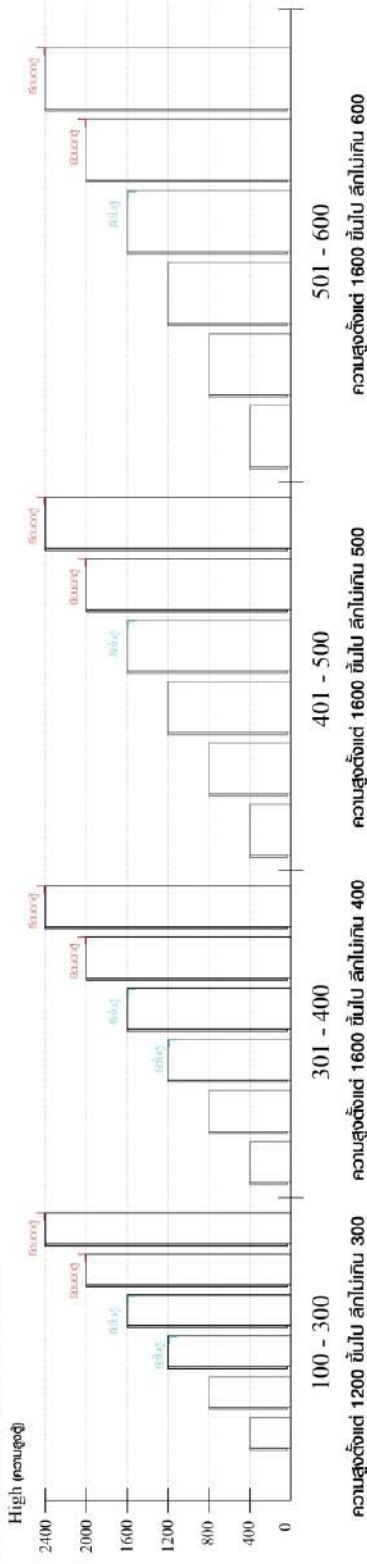






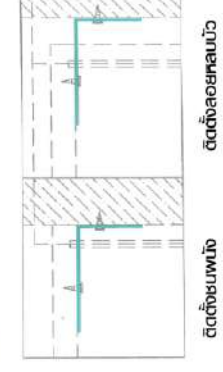
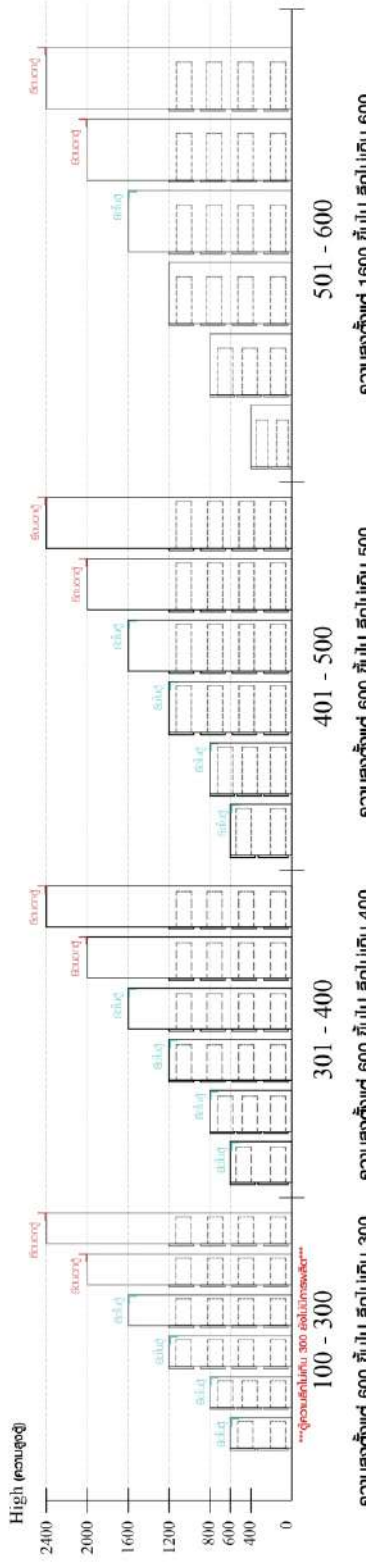
■ มาตราฐาน การระบุสินค้าที่ต้องยึด Fitting กันลื่น (Safety Fitting) *หมายเหตุ สันเก๋ที่เป็นชุดเด็ก ให้ติดตั้ง Fitting กันลื่นทุกตัว*****

■ หมวด ตู้บานเปิด / ตู้บานเปิด + ช่องใส่



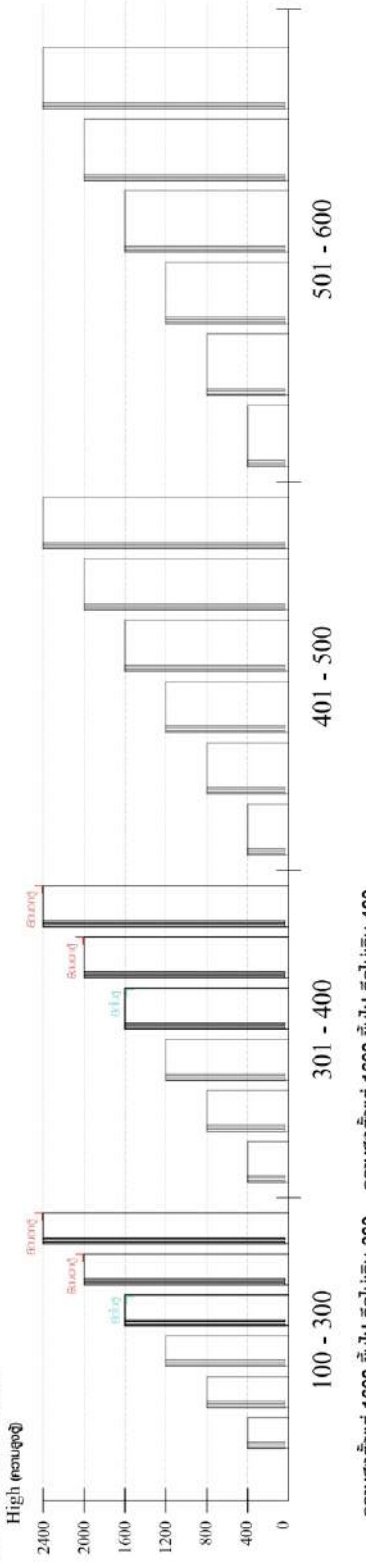
■ ติดตั้งฉากกันลื่นกับตู้สูง (ตั้งเด้ง 2 ม.ขึ้นไป)

■ หมวด ตู้ลิ้นชัก / ตู้ลิ้นชัก + บานเปิด / ตู้ลิ้นชัก / ตู้ลิ้นชัก + บานใส่



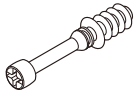
■ ติดตั้งฉากกันลื่นกับตู้เตี้ย (น้อยกว่า 2 ม.)

■ หมวด ตู้บานใส่ / ตู้ใส่



HARDWARE

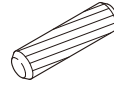
-BODY SET



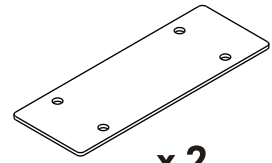
x 12



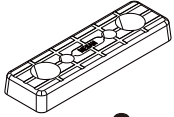
x 12



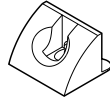
x 24



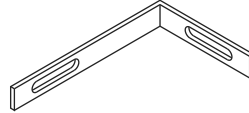
x 2



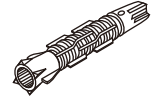
x 8



x 6



x 1



x 1



Ø15mm.
Sticker

x 12



M3.5x20mm.

x 6



M4x13mm.

x 8



M4x16mm.

x 16



M4x50mm.

x 12



M4x13mm.

x 6



M4x16mm.

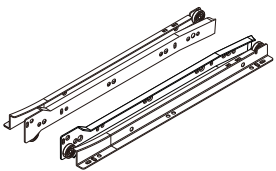
x 1



M5x50mm.

x 1

-DRAWER SET



x 4 set



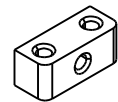
M3.5x13mm.

x 56



M4x40mm.

x 20



x 4



M4x25mm.

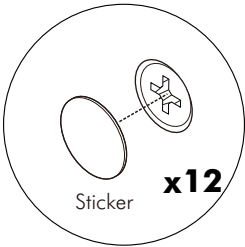
x 12



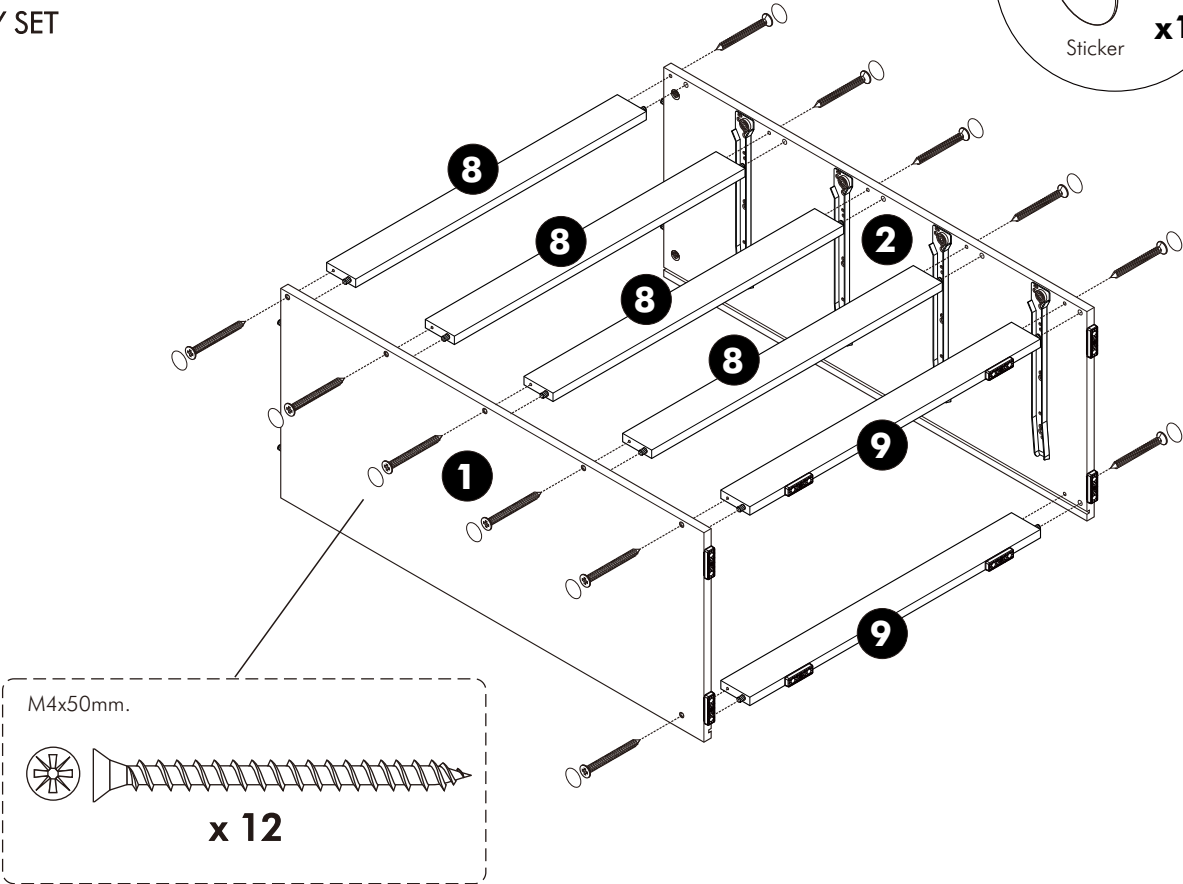
x 8

ASSEMBLY

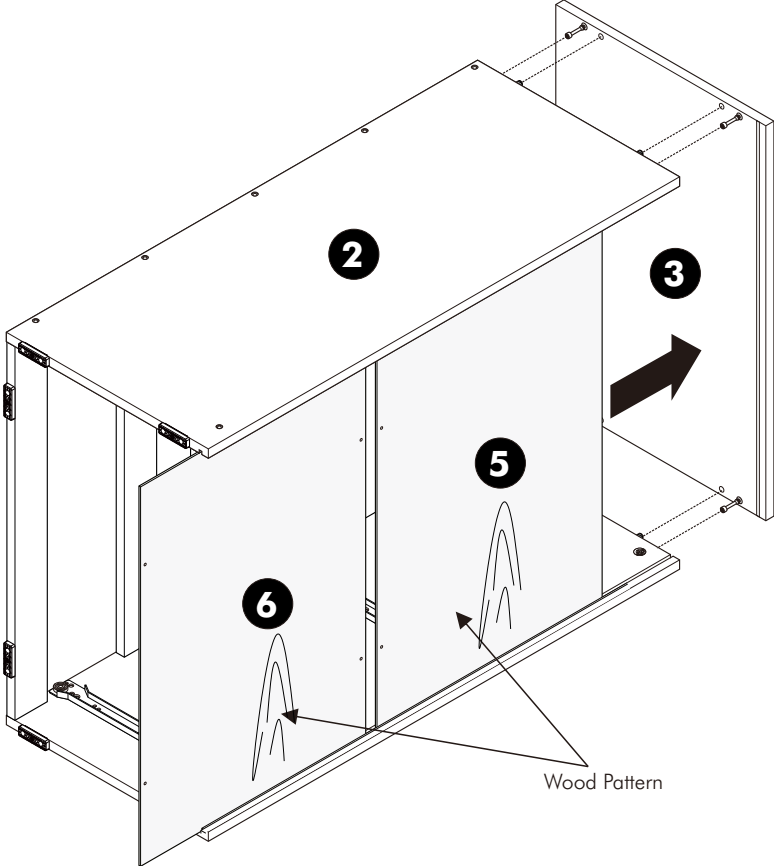
-BODY SET



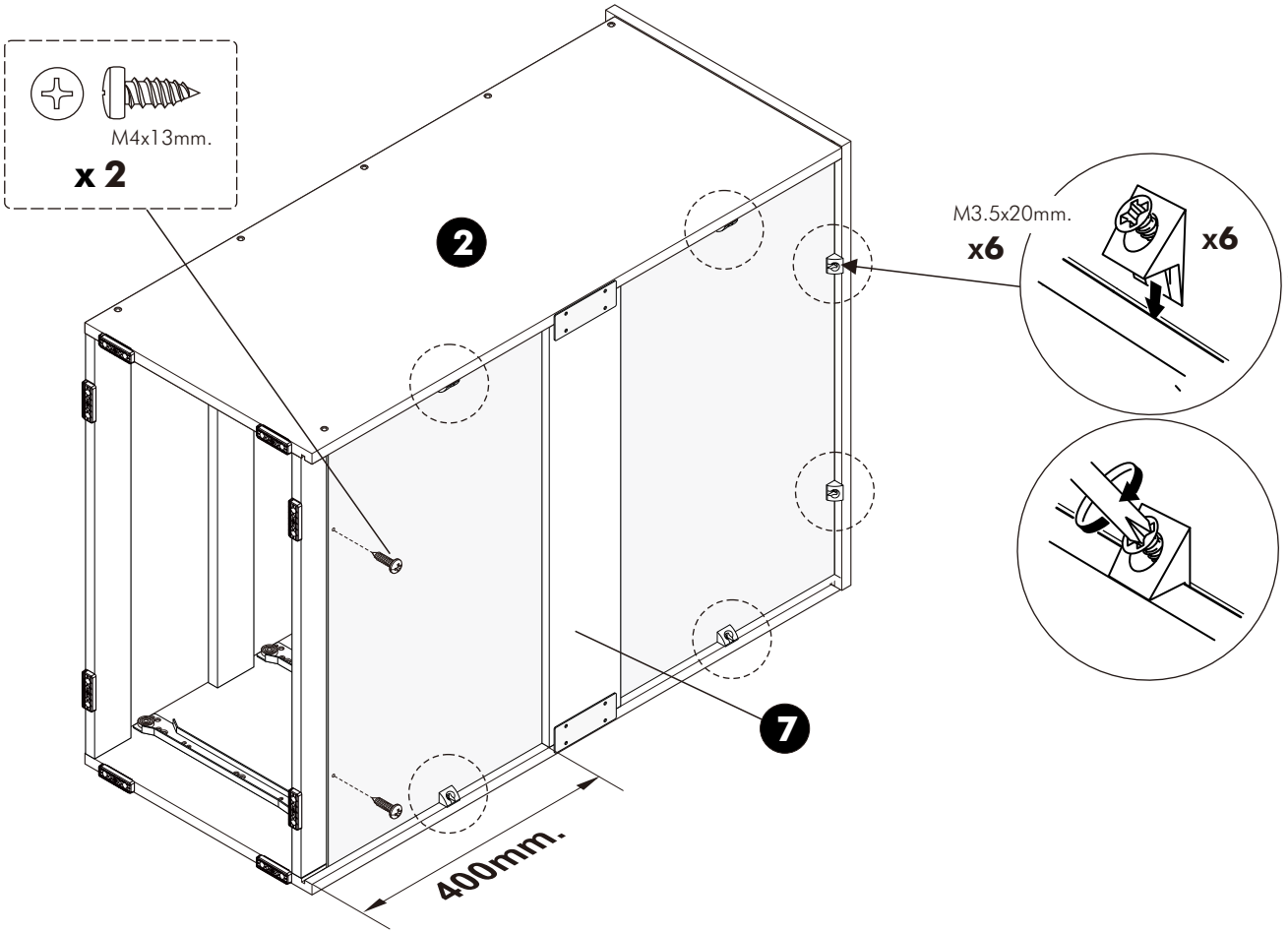
1.



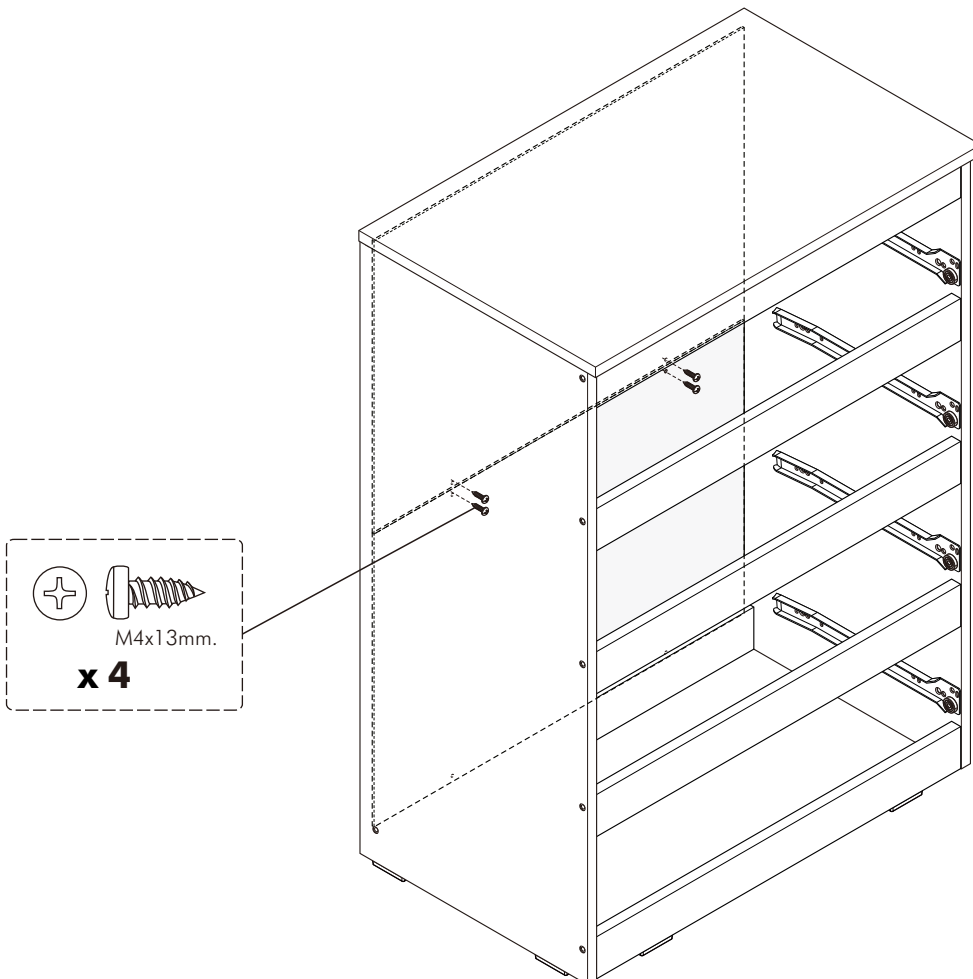
2.



3.



4.

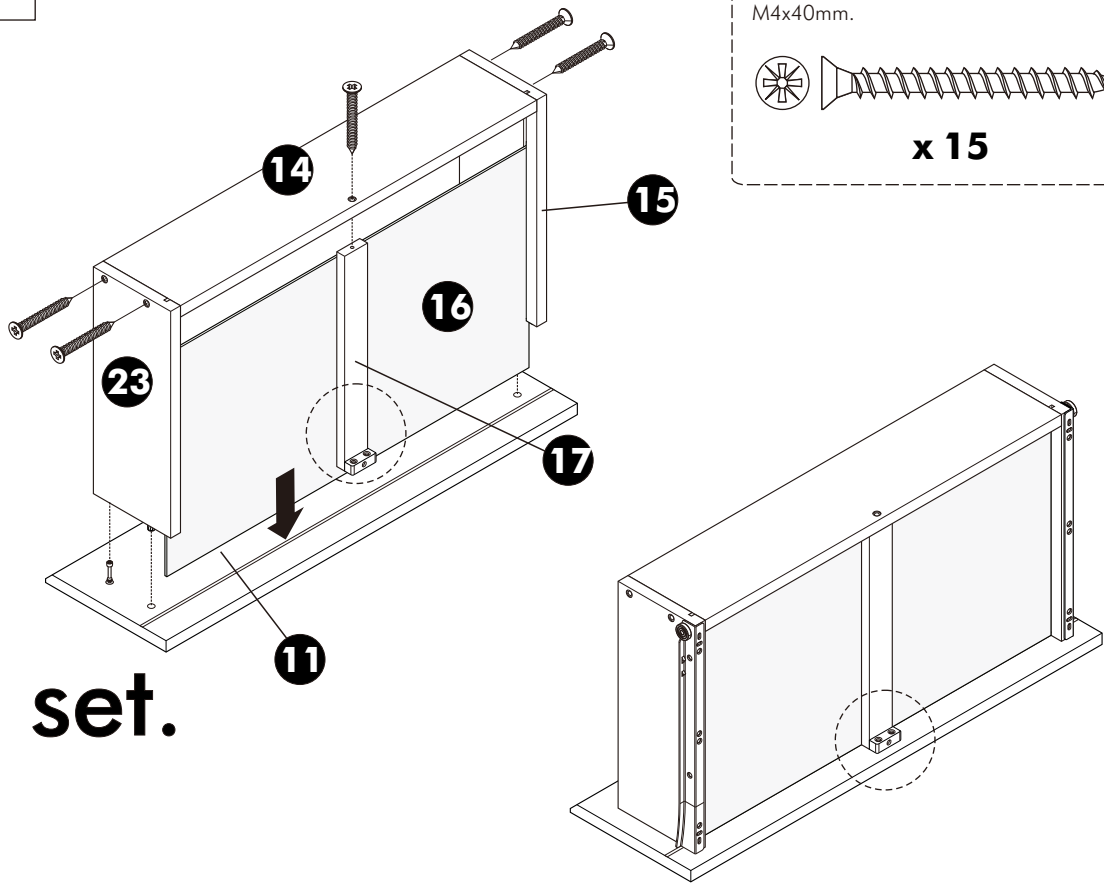


ASSEMBLY

-DRAWER SET

1.

4 set.



2.

