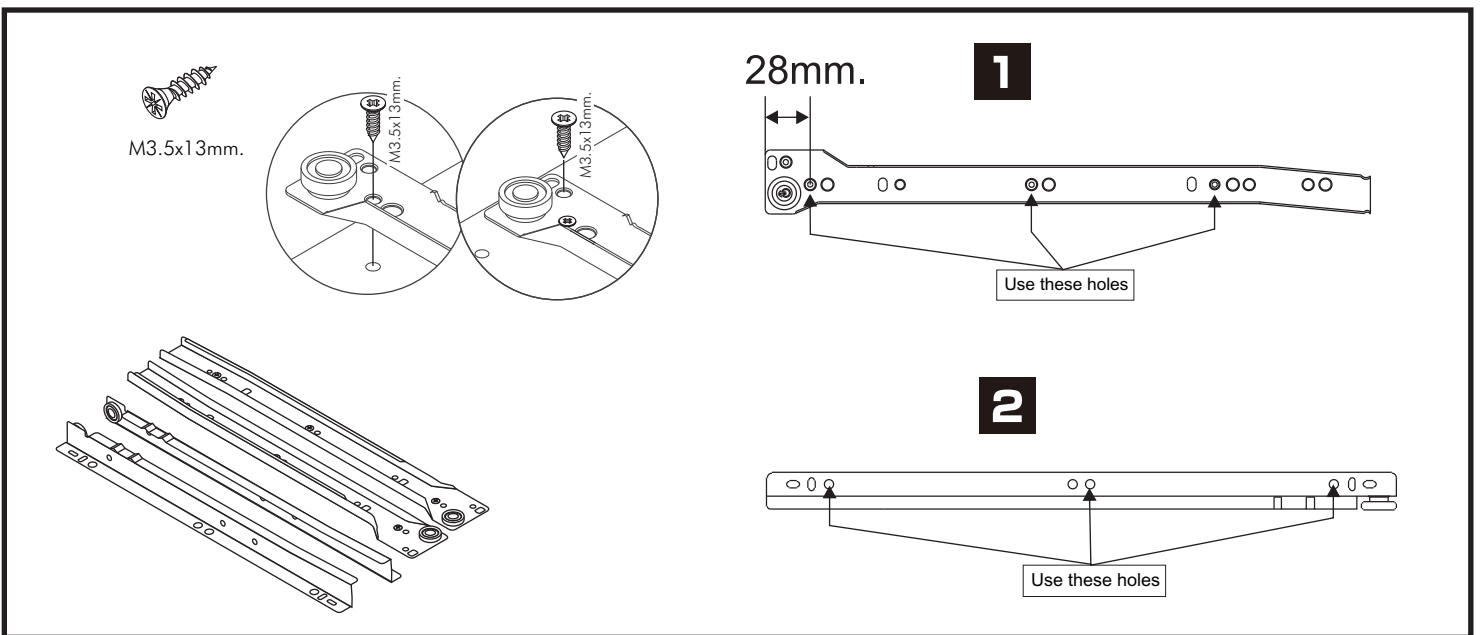
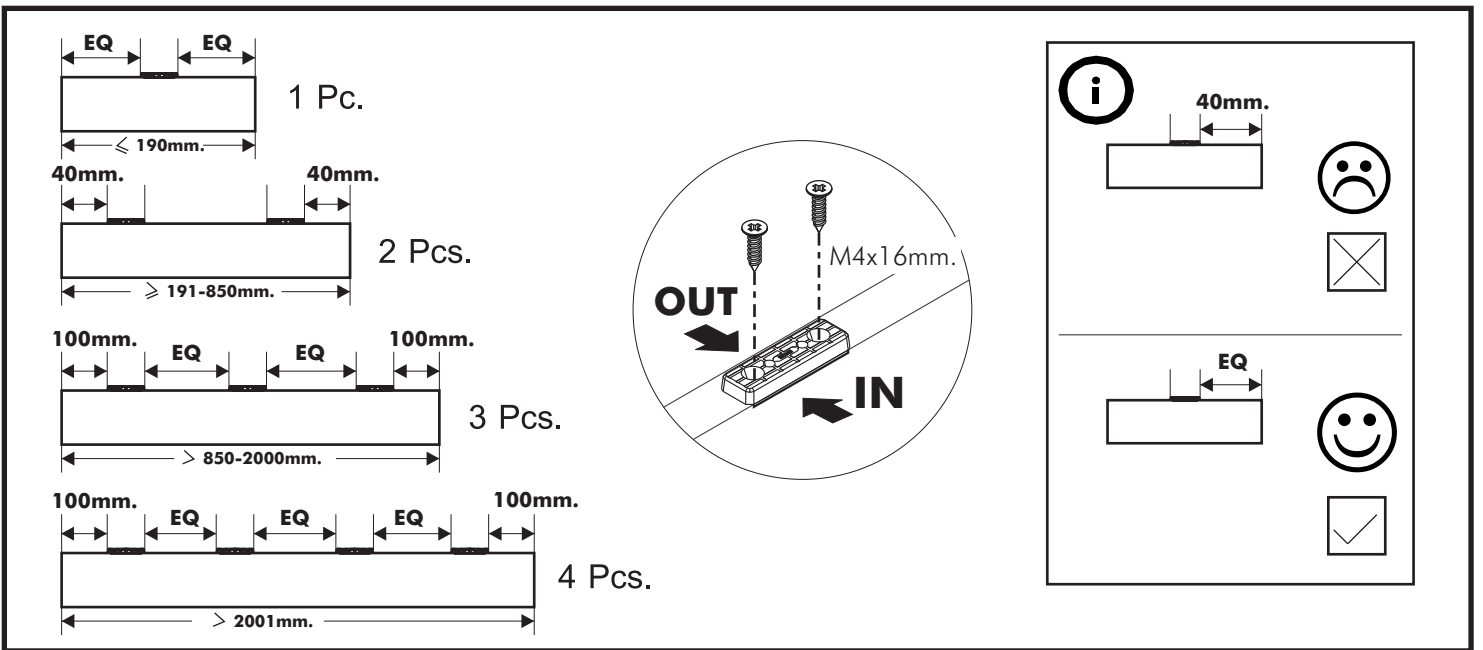
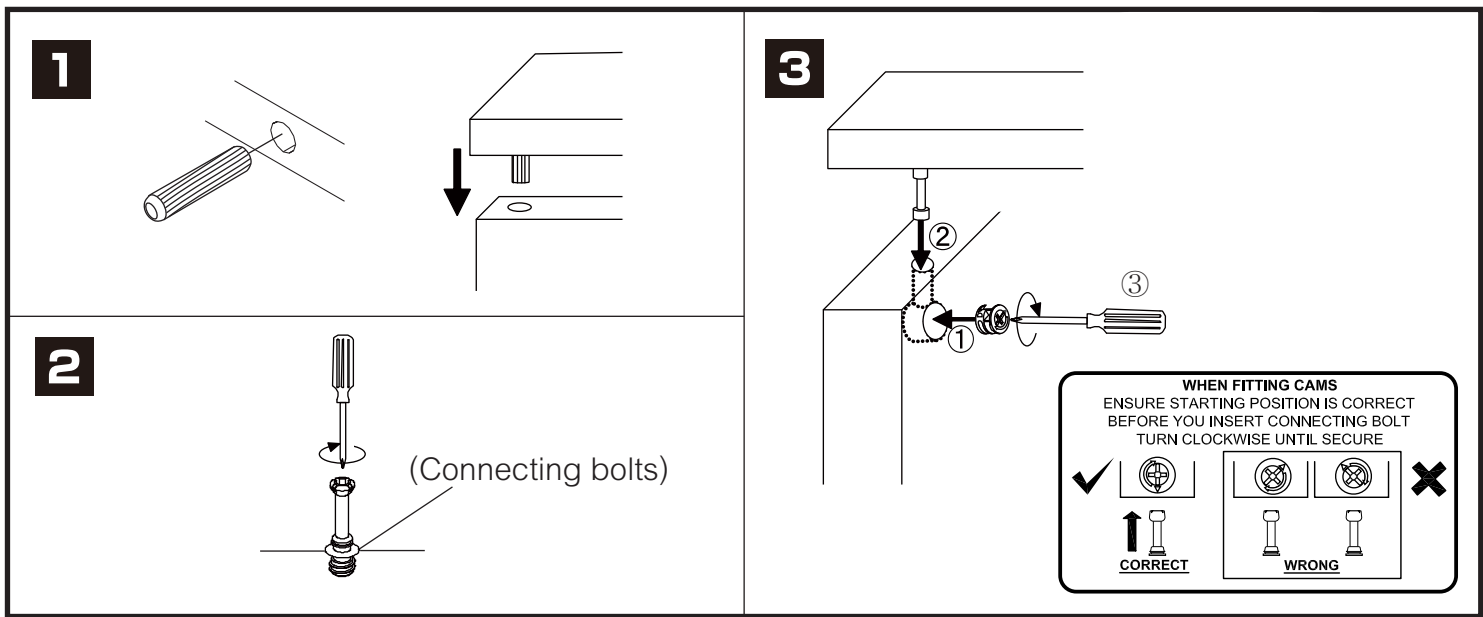


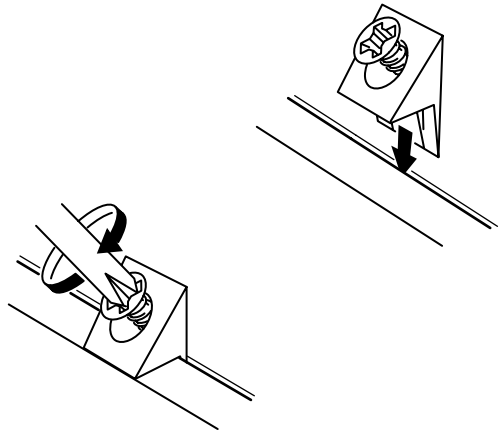
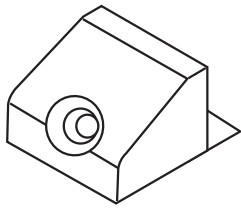
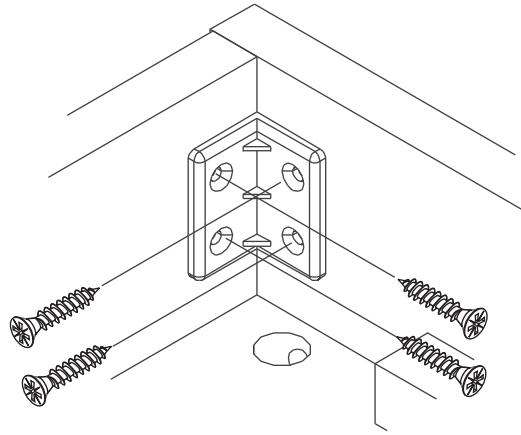
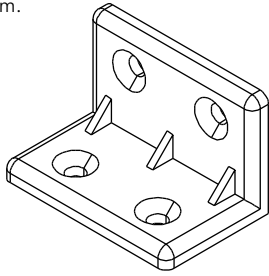
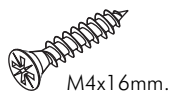
ROME

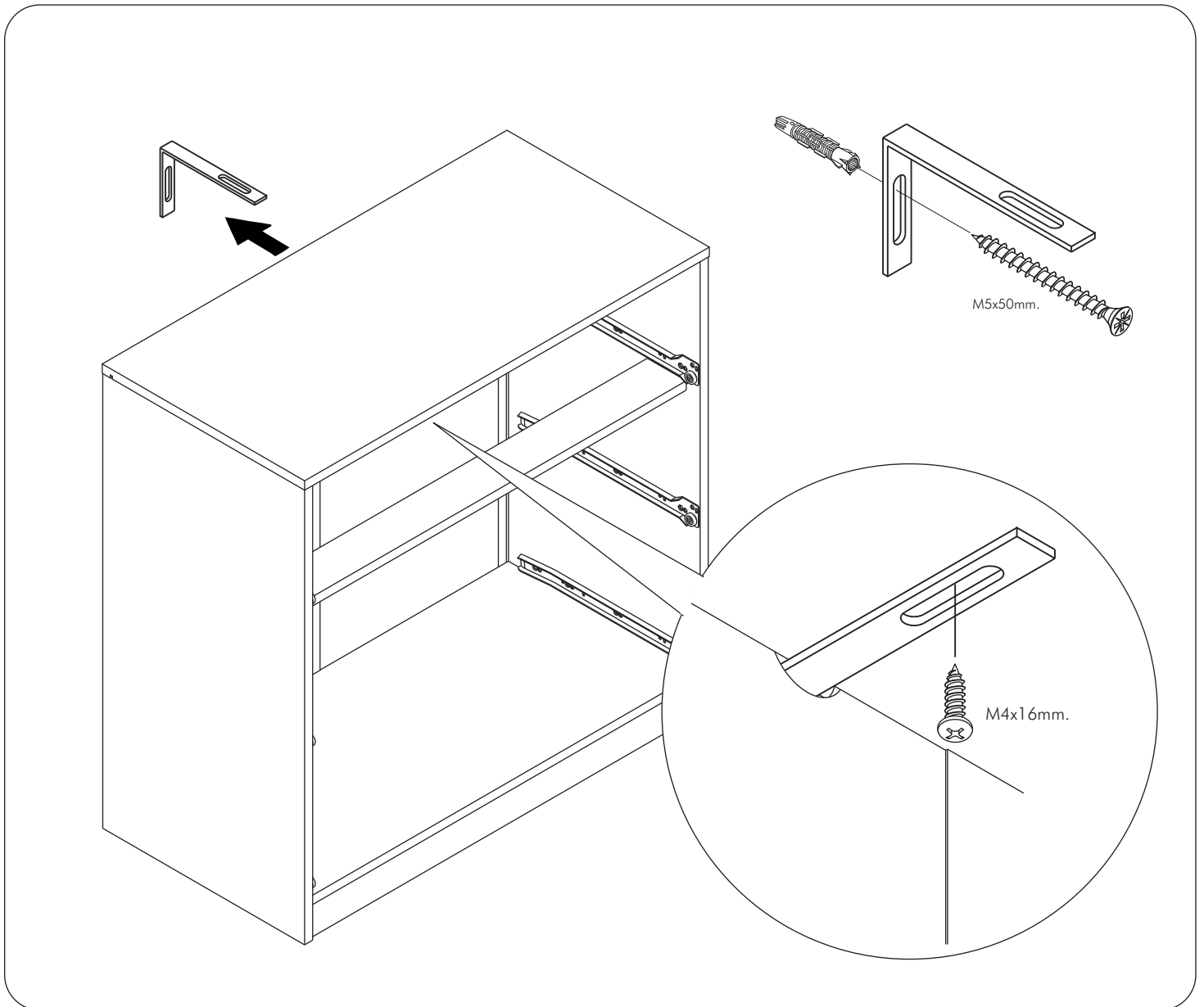
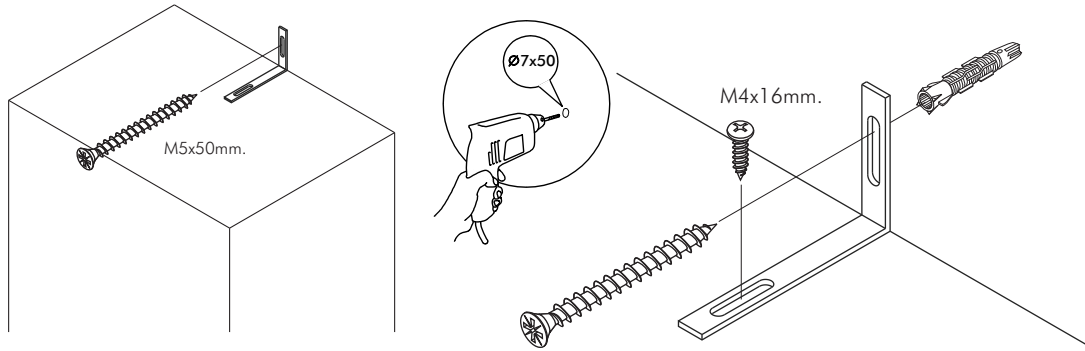
Chest 6 Drawers



CONNECT SYSTEM

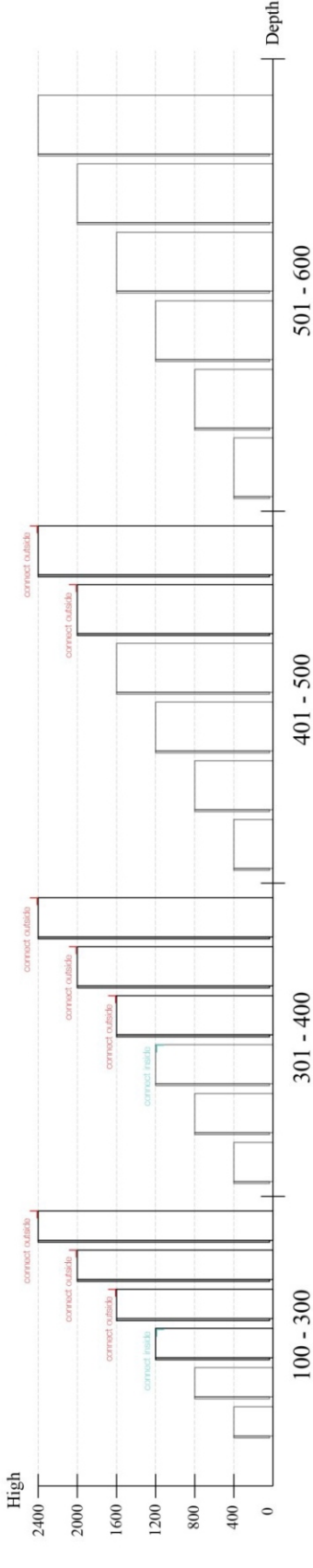
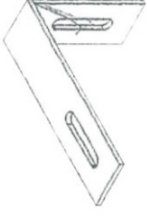






■ The Standard for identifying which mounted safety fall protection fitting to use **Note : That children's products must be installed with all anti-falling fittings.**

■ Mounted fall protection fittings



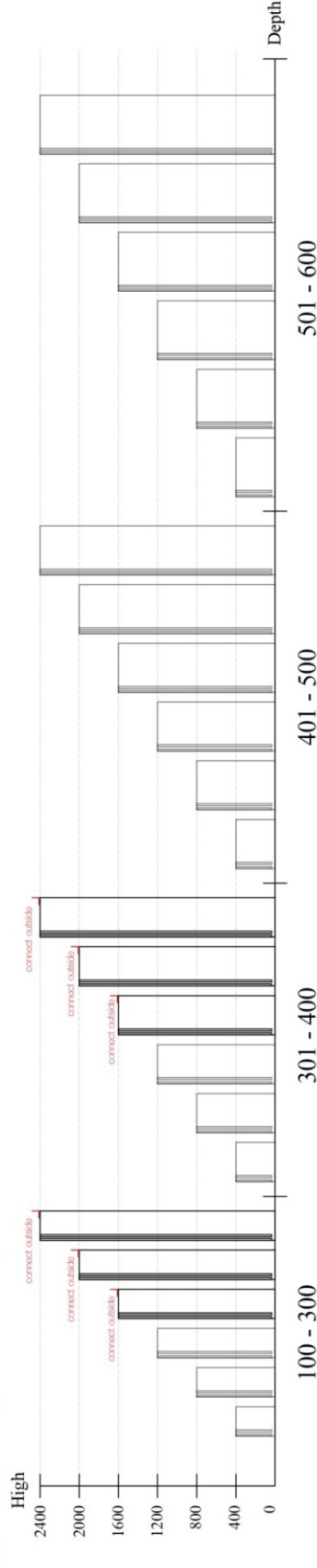
Height from 1200 and up, depth of Height from 2000 and up, depth of not more than 500.

■ Category : Chest of drawers



Height from 600 and up, depth of Height from 600 and up, depth of not more than 500.

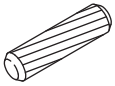
■ Category : Sliding door cabinet / Open cabinet



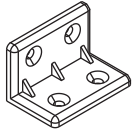
Height from 1600 and up, depth of Height from 1600 and up, depth of not more than 300.

HARDWARE

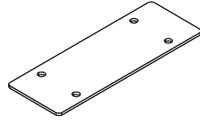
-BODY SET



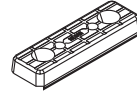
x 20



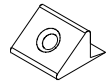
x 22



x 2



x 12

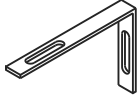


x 8



#UP-745

x 1

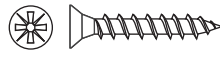


x 1



M4x50mm.

x 4



M3.5x20mm.

x 8



M4x16mm.

x 112



M4x16mm.

x 7



M4x25mm.

x 12



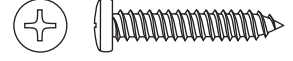
M5x50mm.

x 1



M4x13mm.

x 8



M4x25mm.

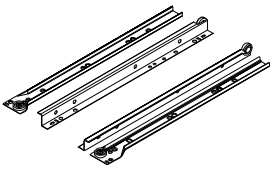
x 12



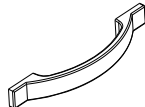
M4x13mm.

x 8

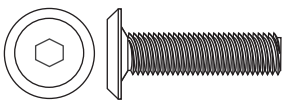
-DRWAER SET



x 6 set

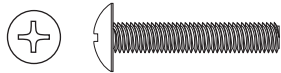


x 6



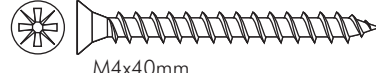
M6x23mm.

x 16



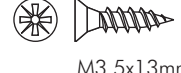
M4x22mm.

x 12



M4x40mm.

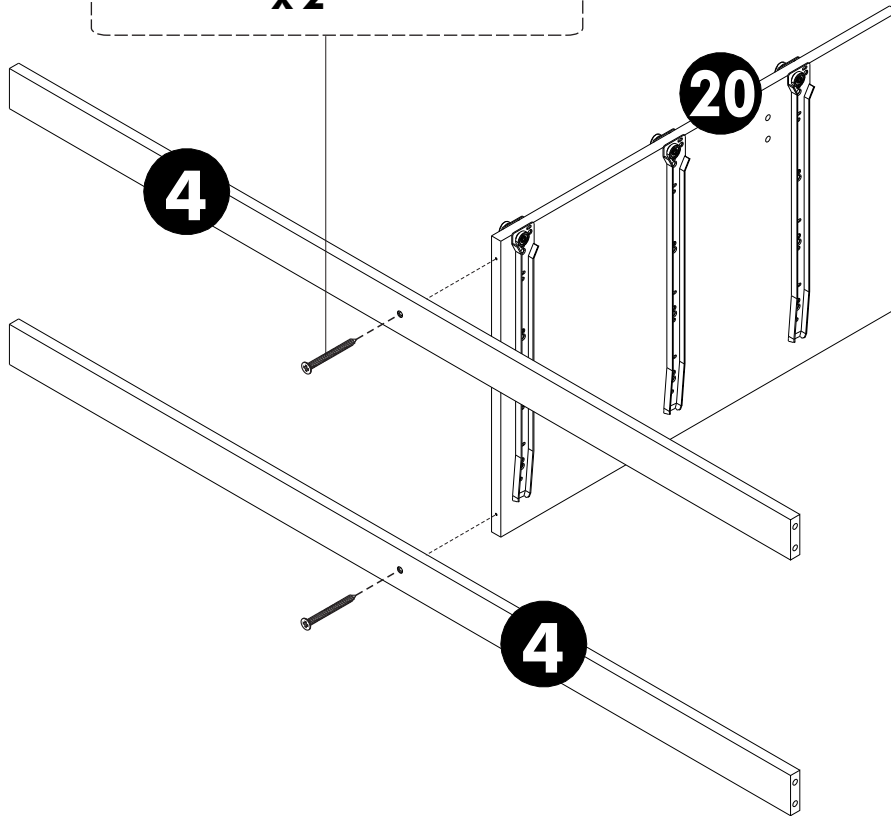
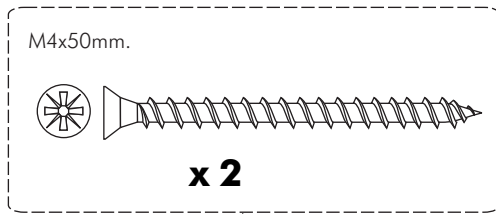
x 60



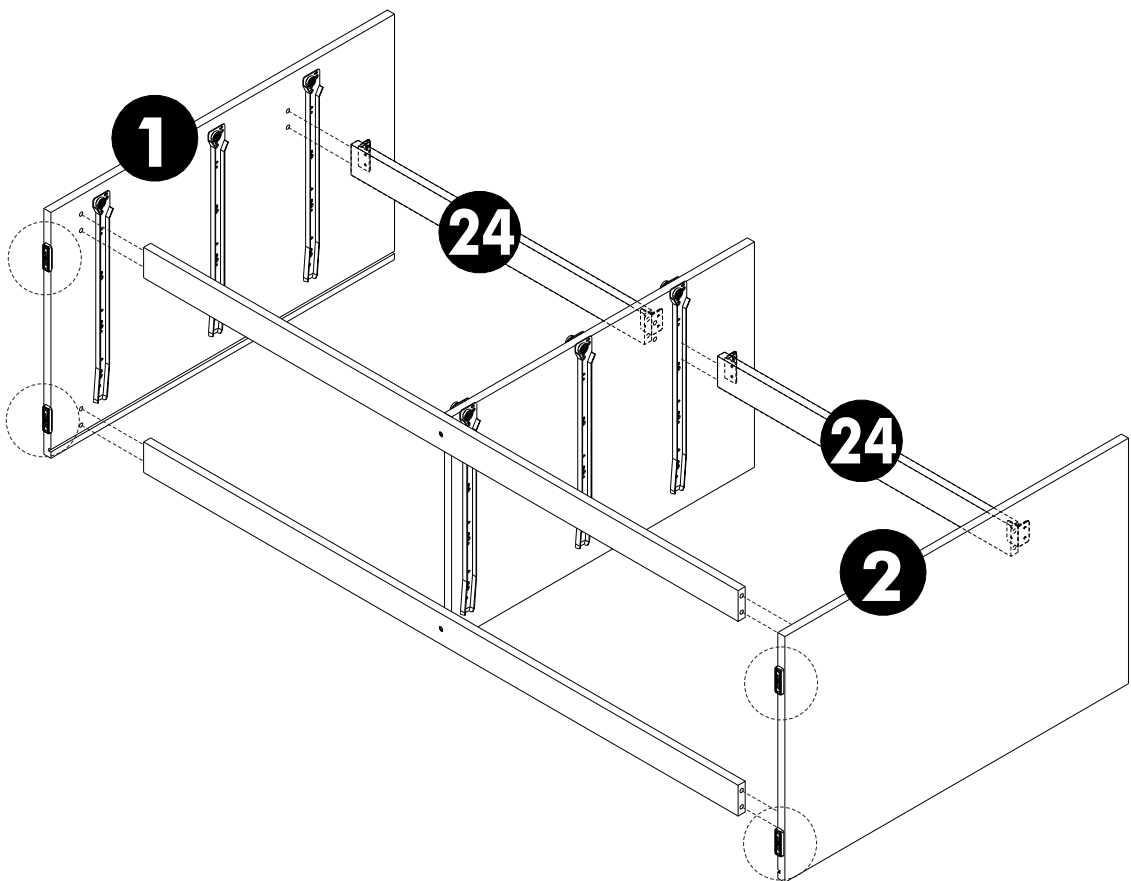
M3.5x13mm.

x 84

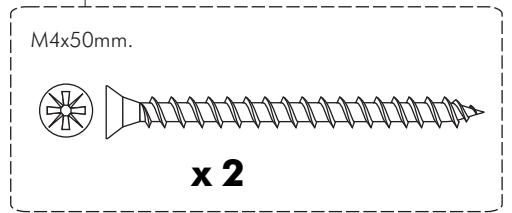
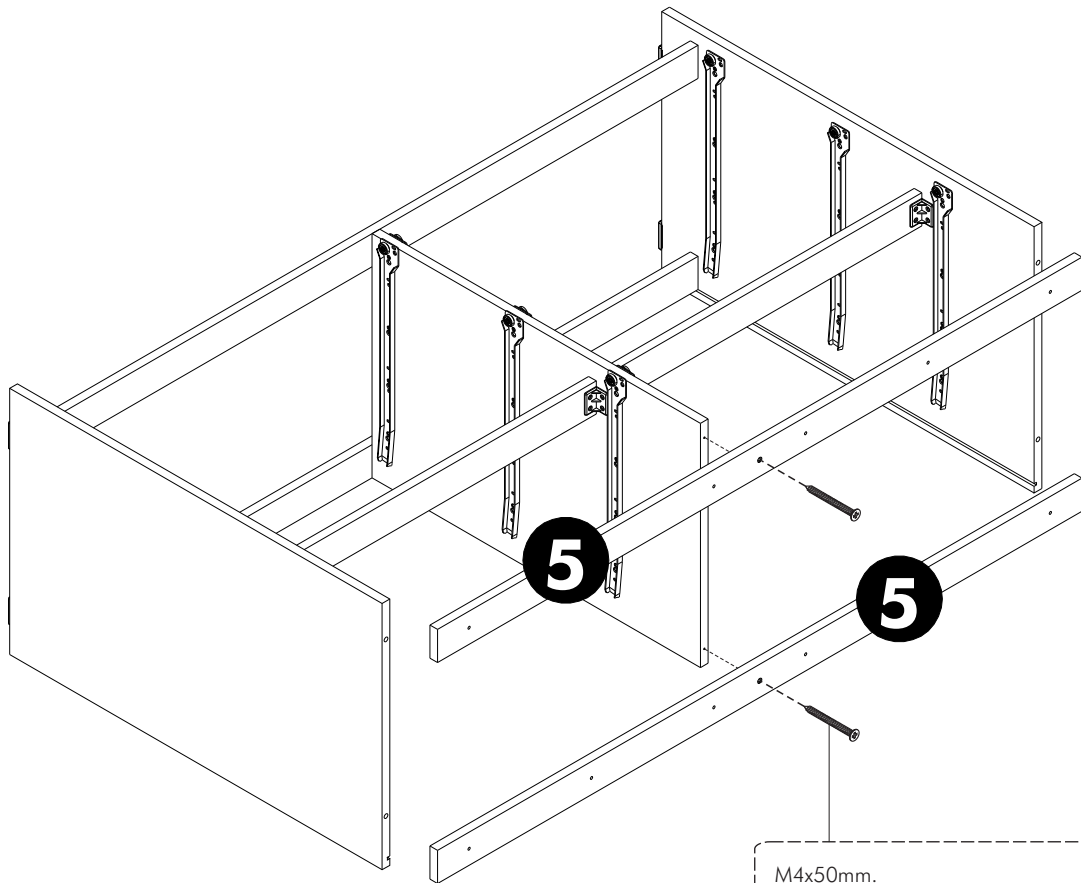
1.



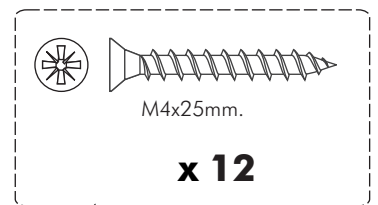
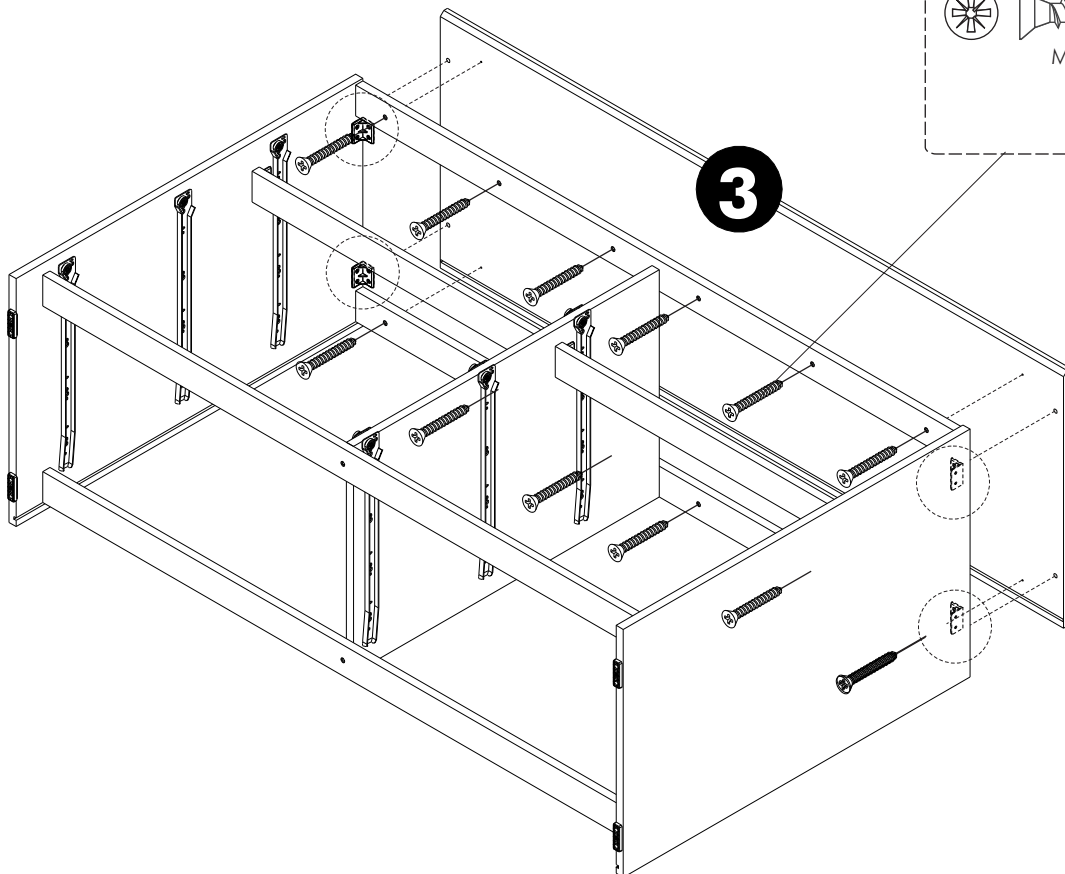
2.



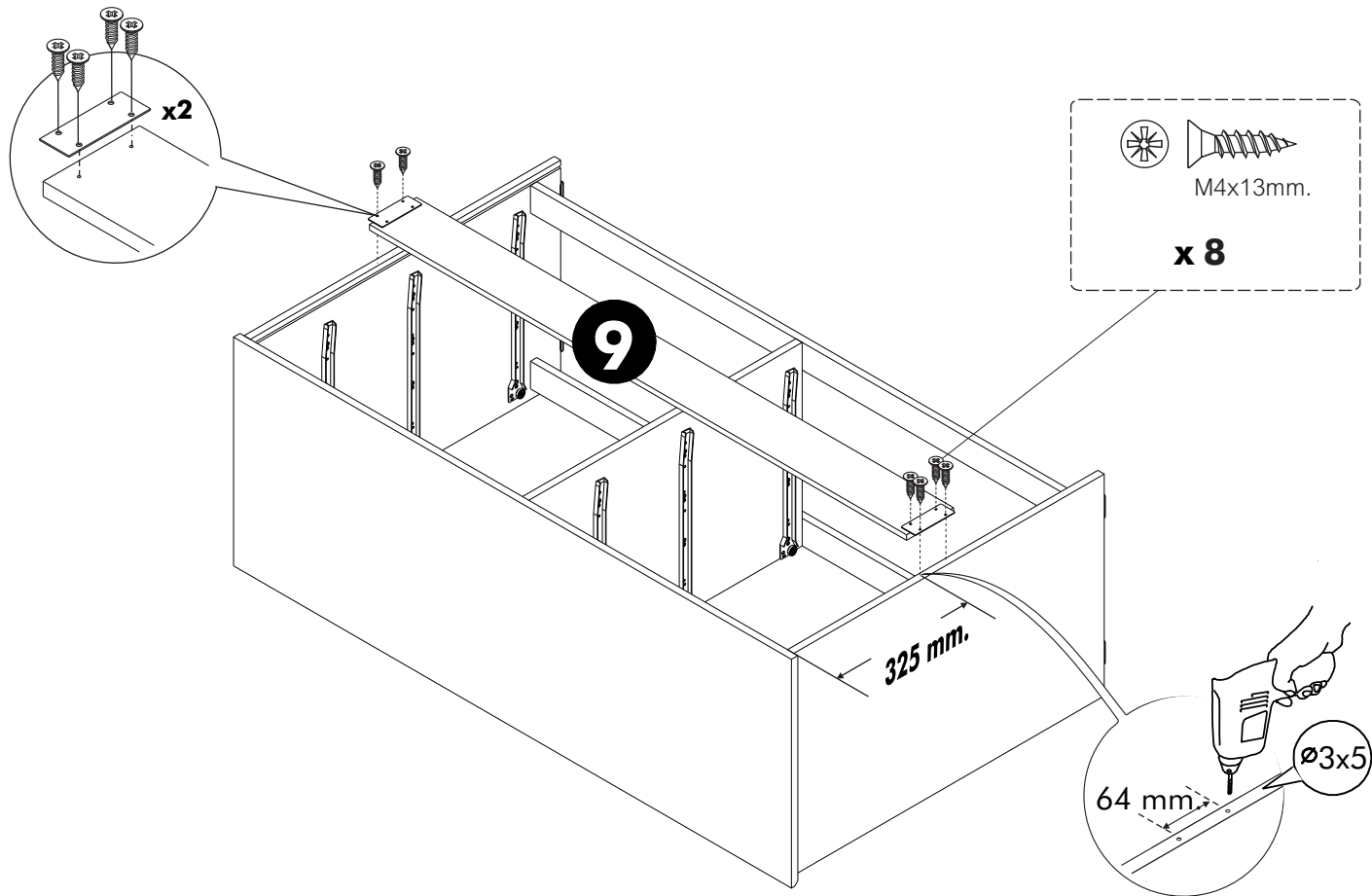
3.



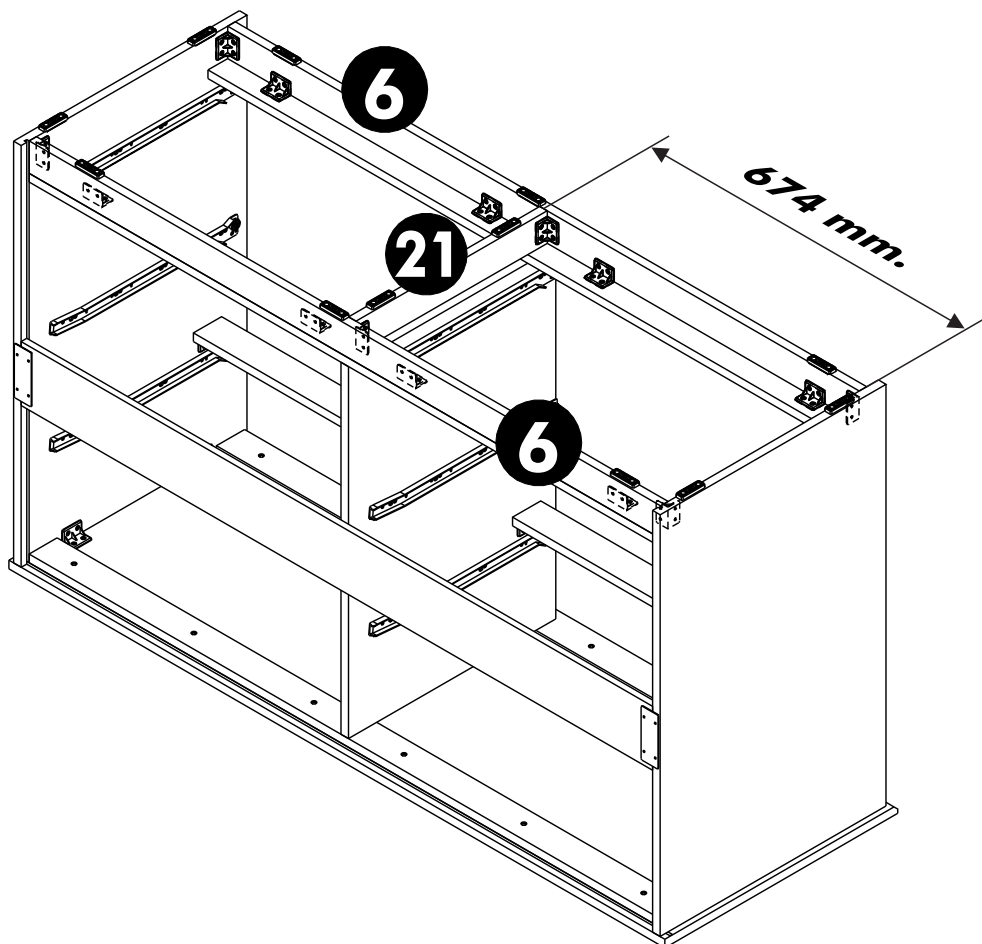
4.



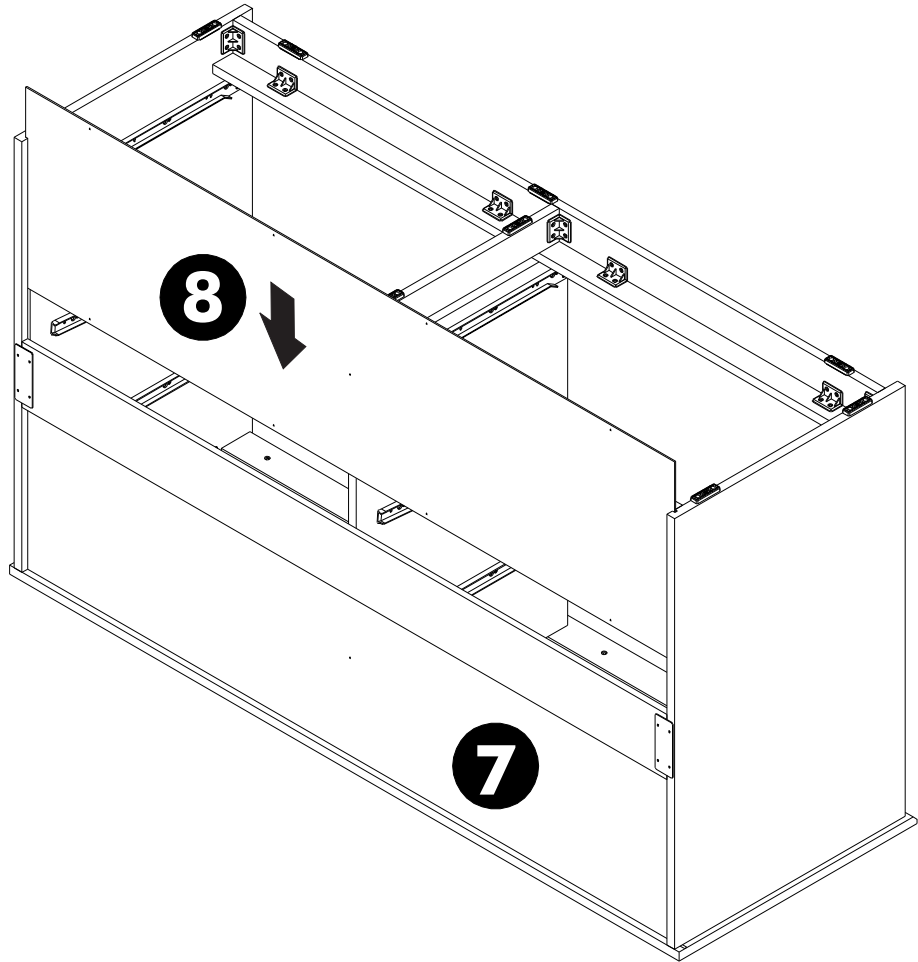
5.



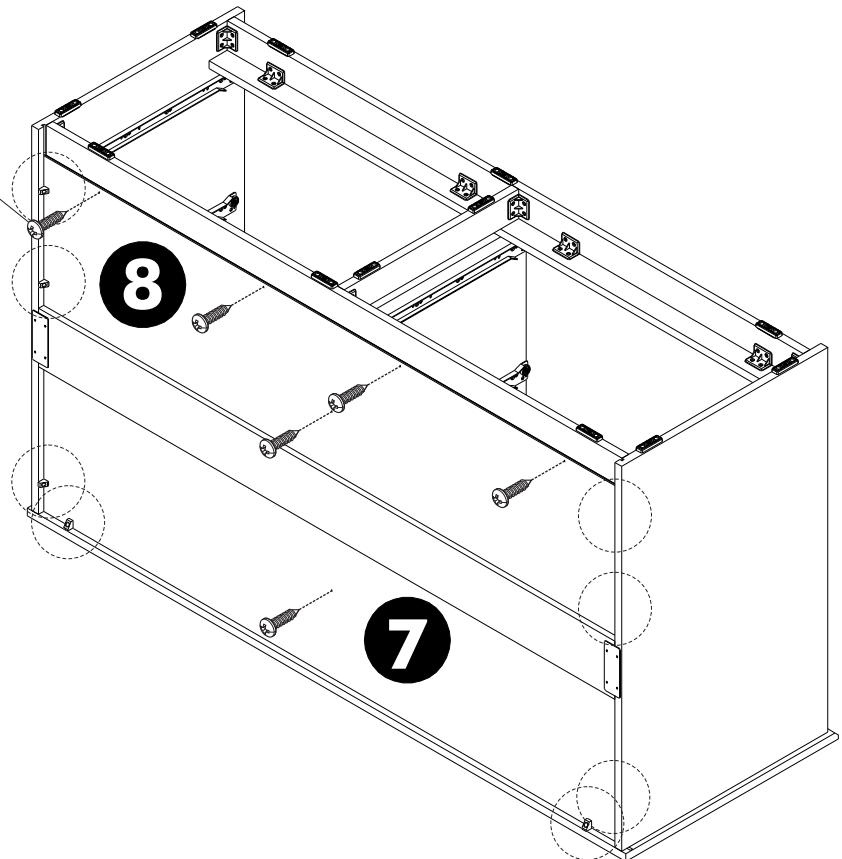
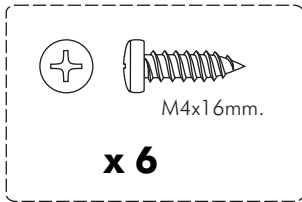
6.





7.

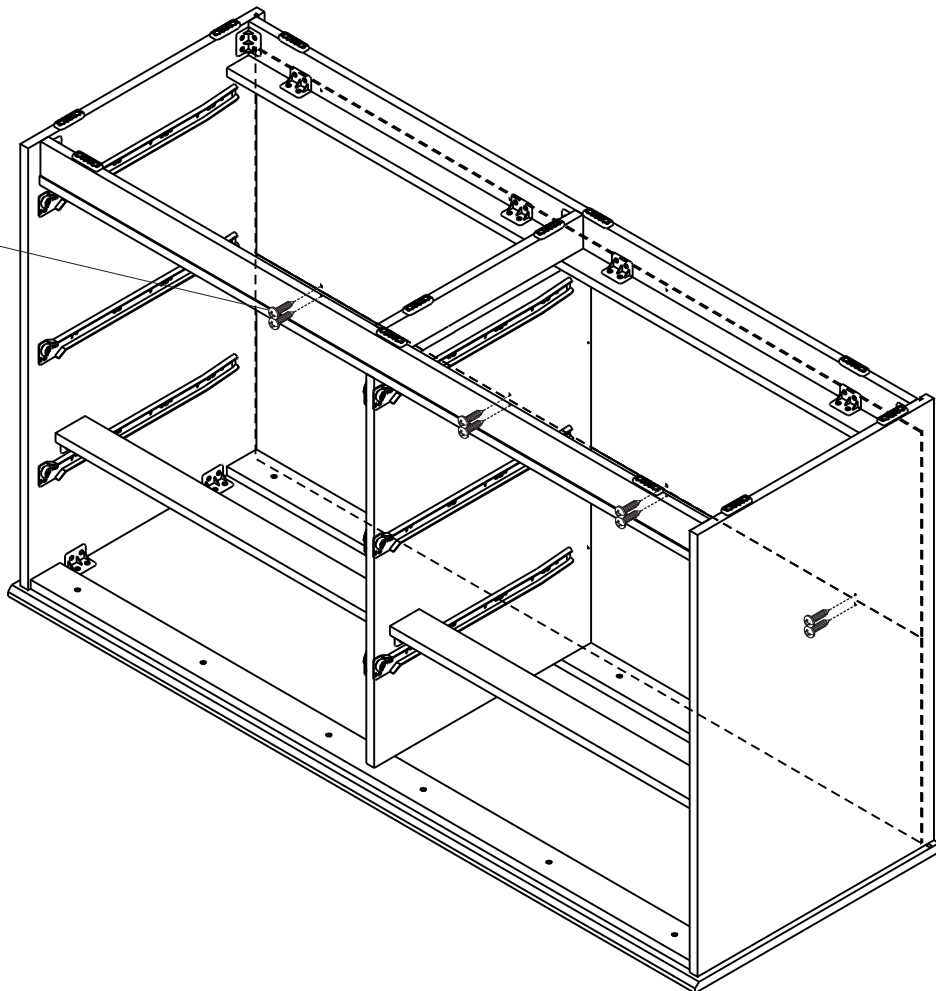


8.



9.

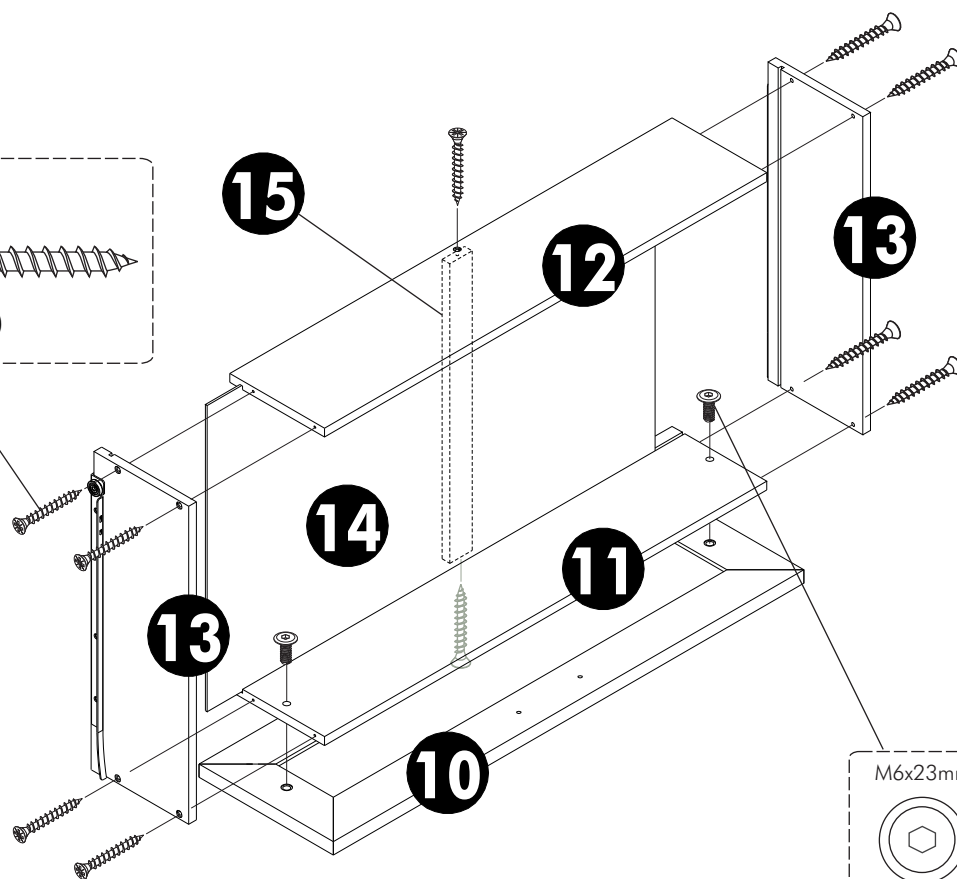
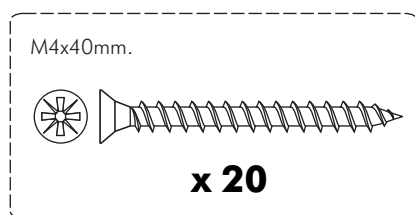
 
M4x13mm.
x 8



10.

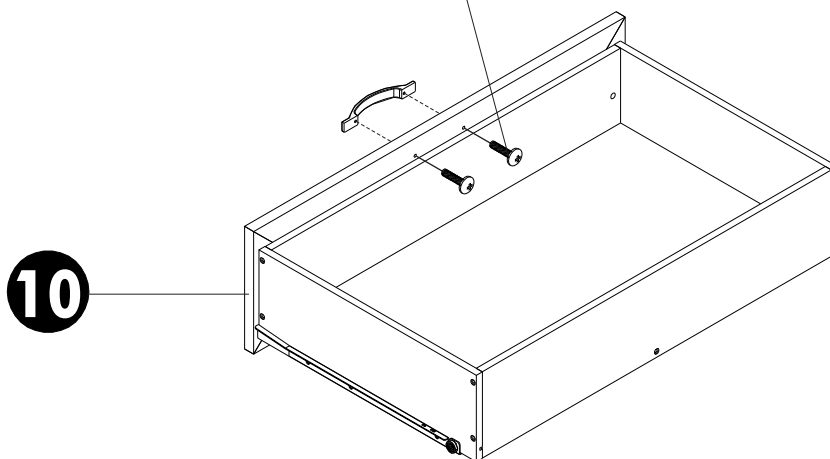
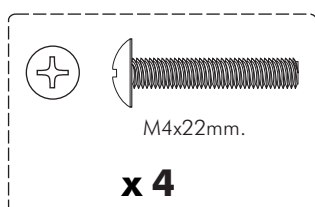
ASSEMBLY

-DRWAER SET



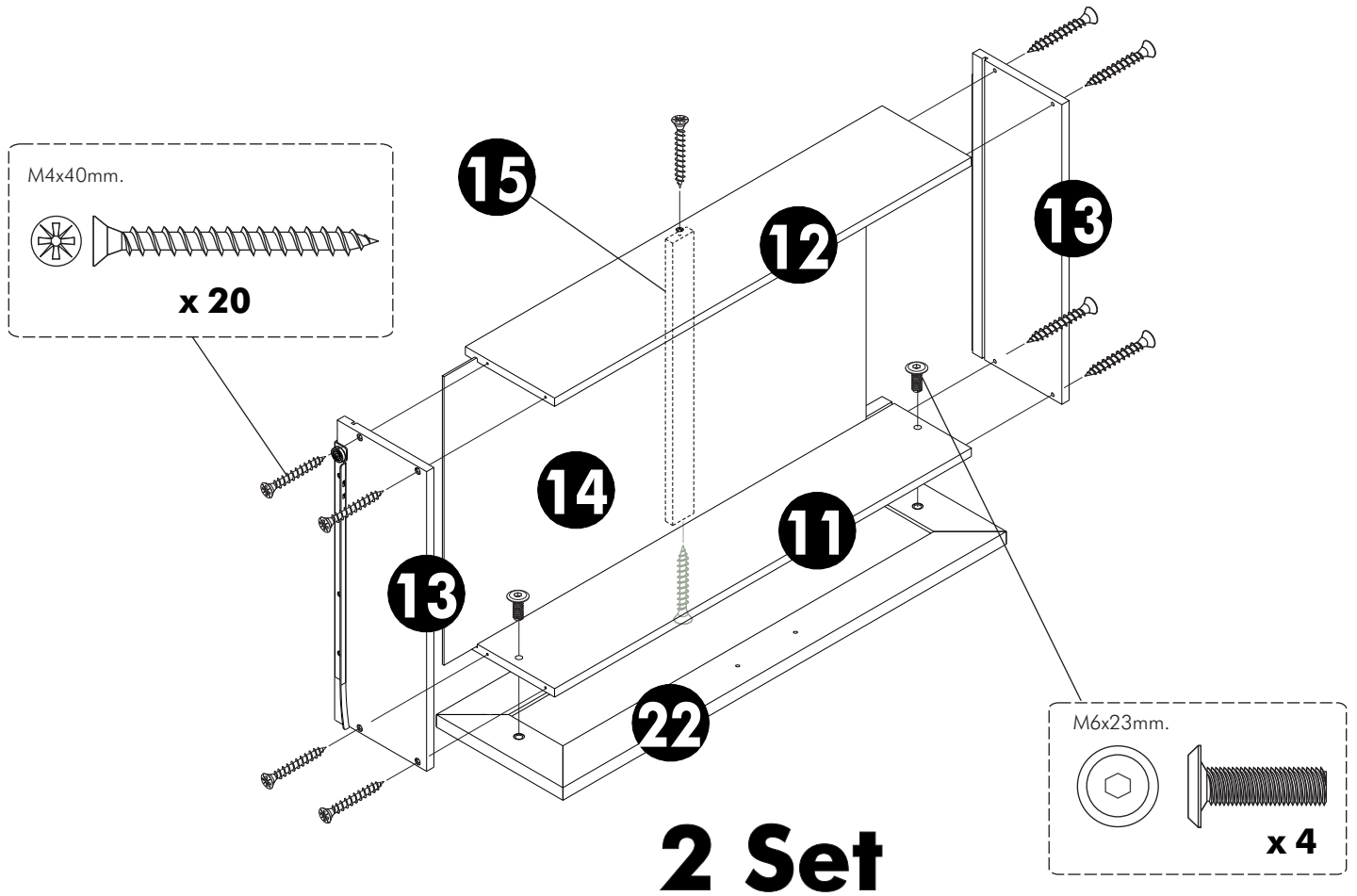
2 Set

11.

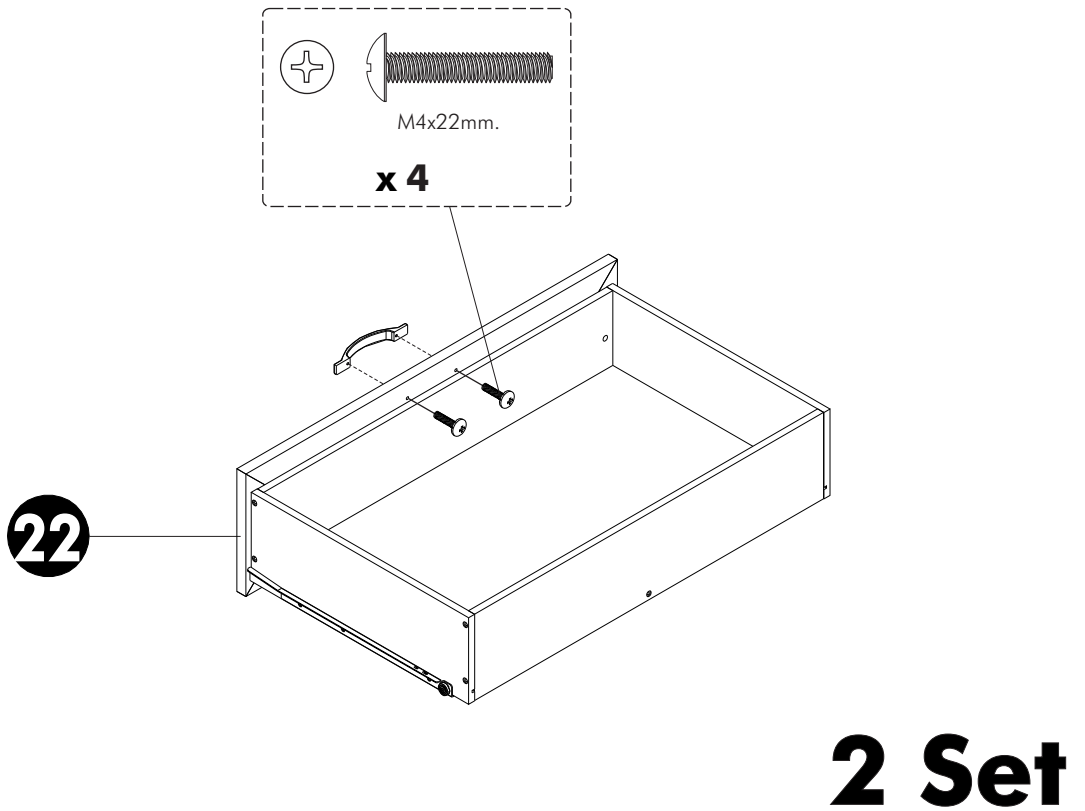


2 Set

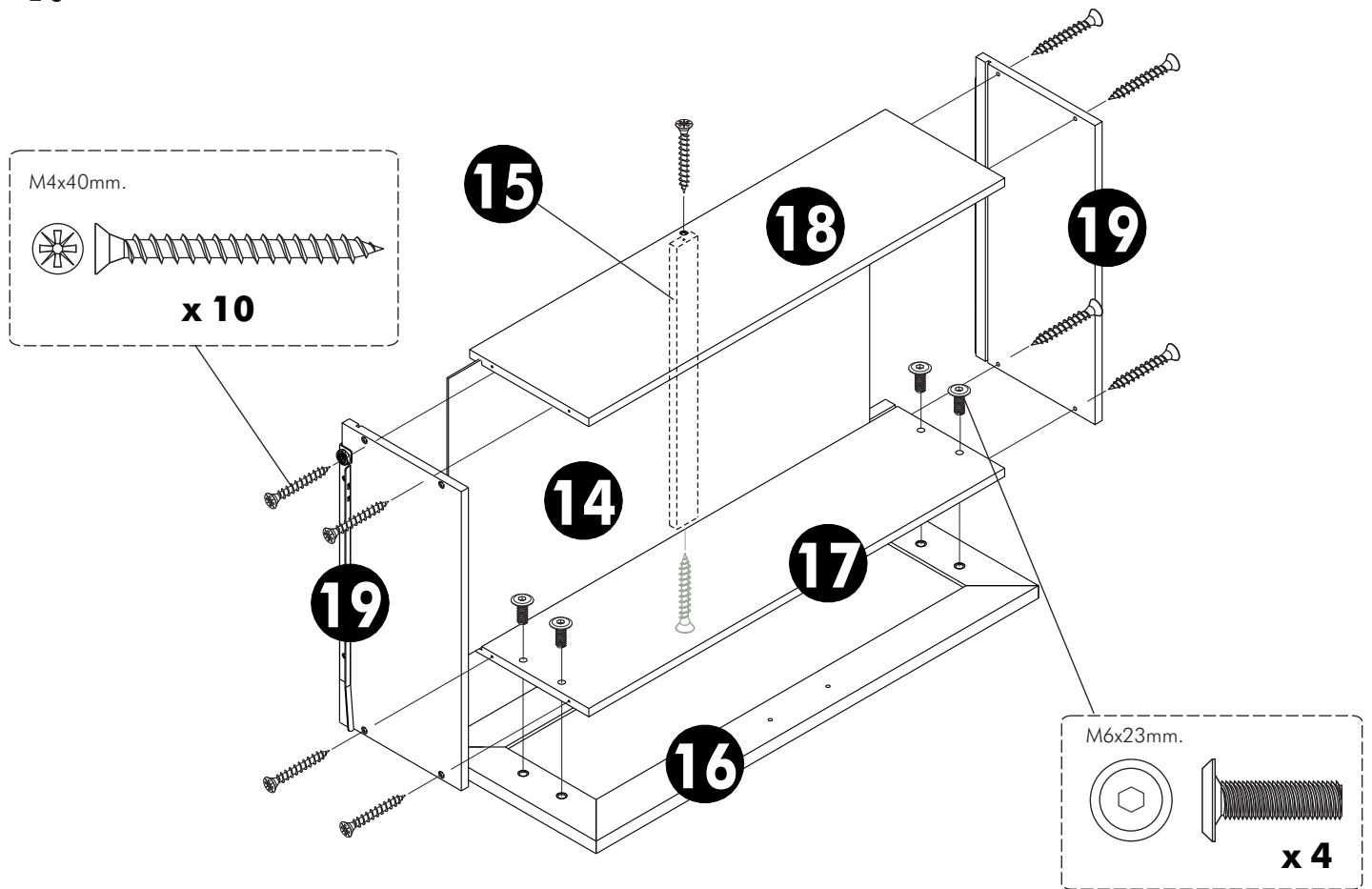
12.



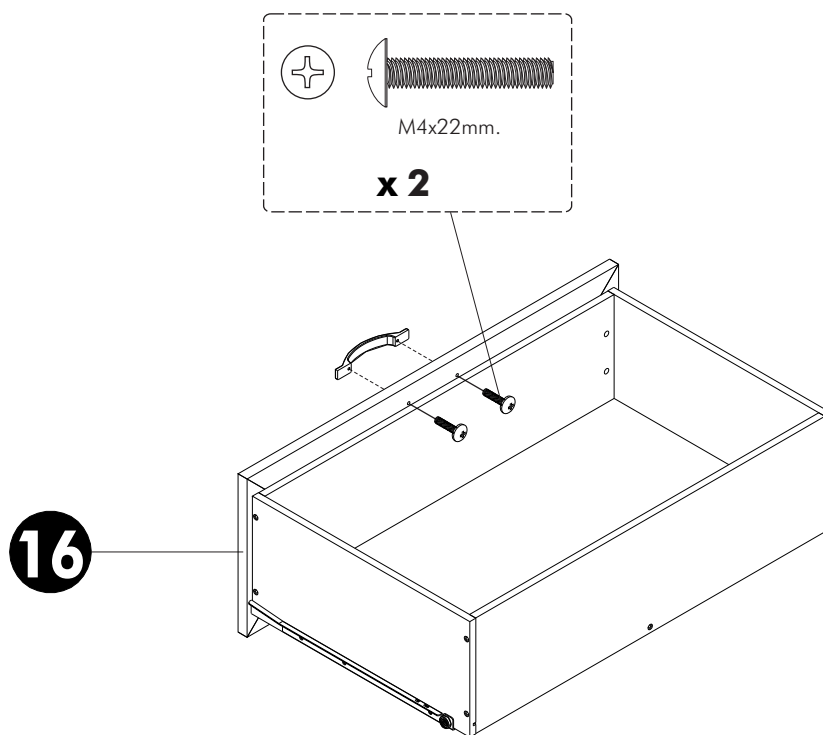
13.



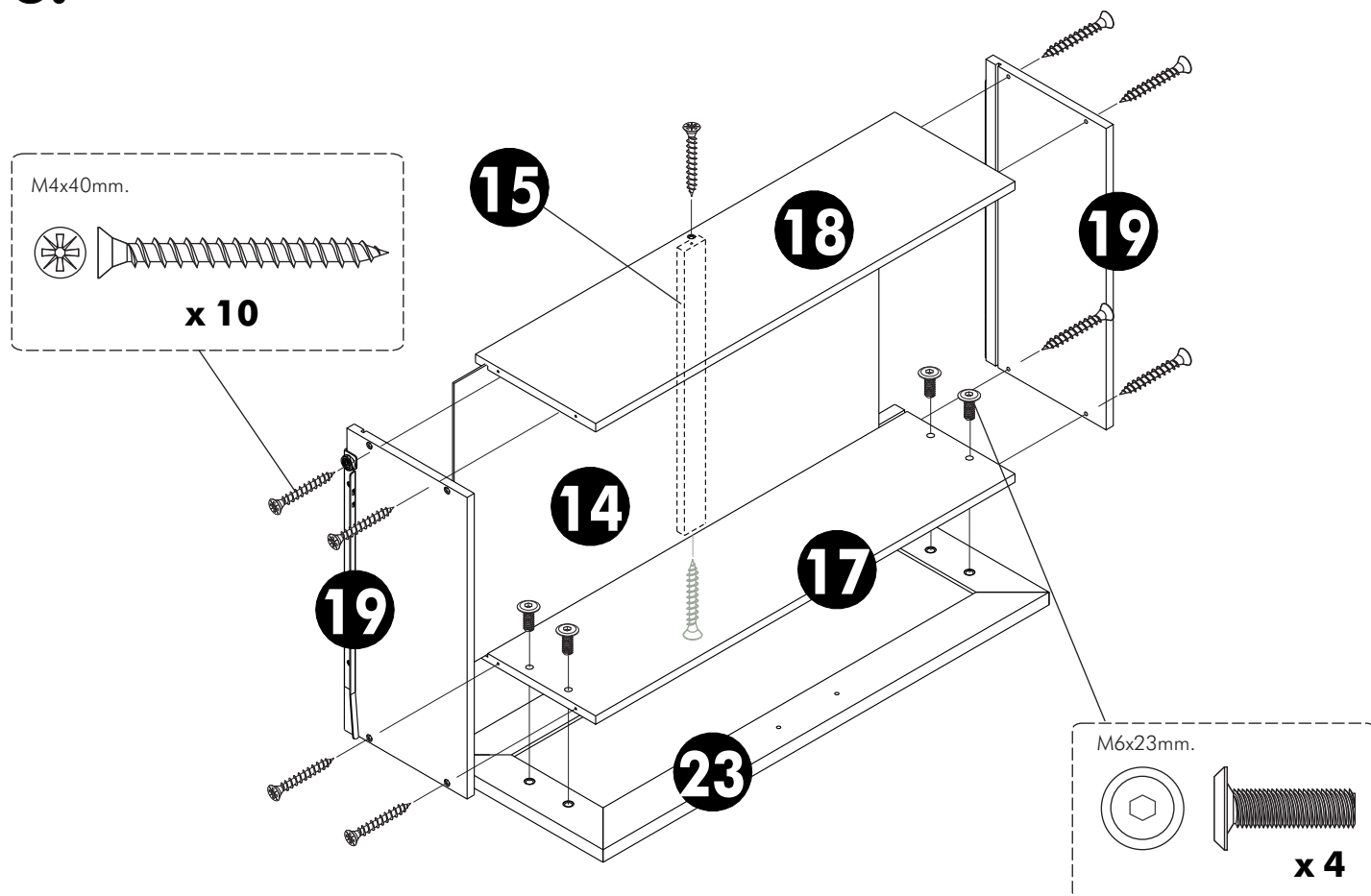
14.



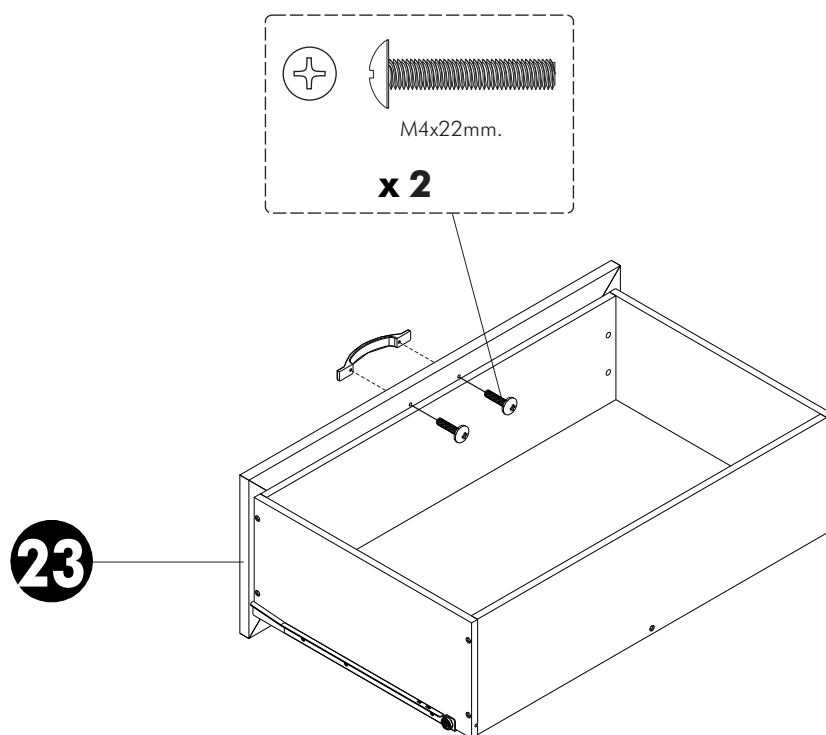
15.



16.



17.



18.

