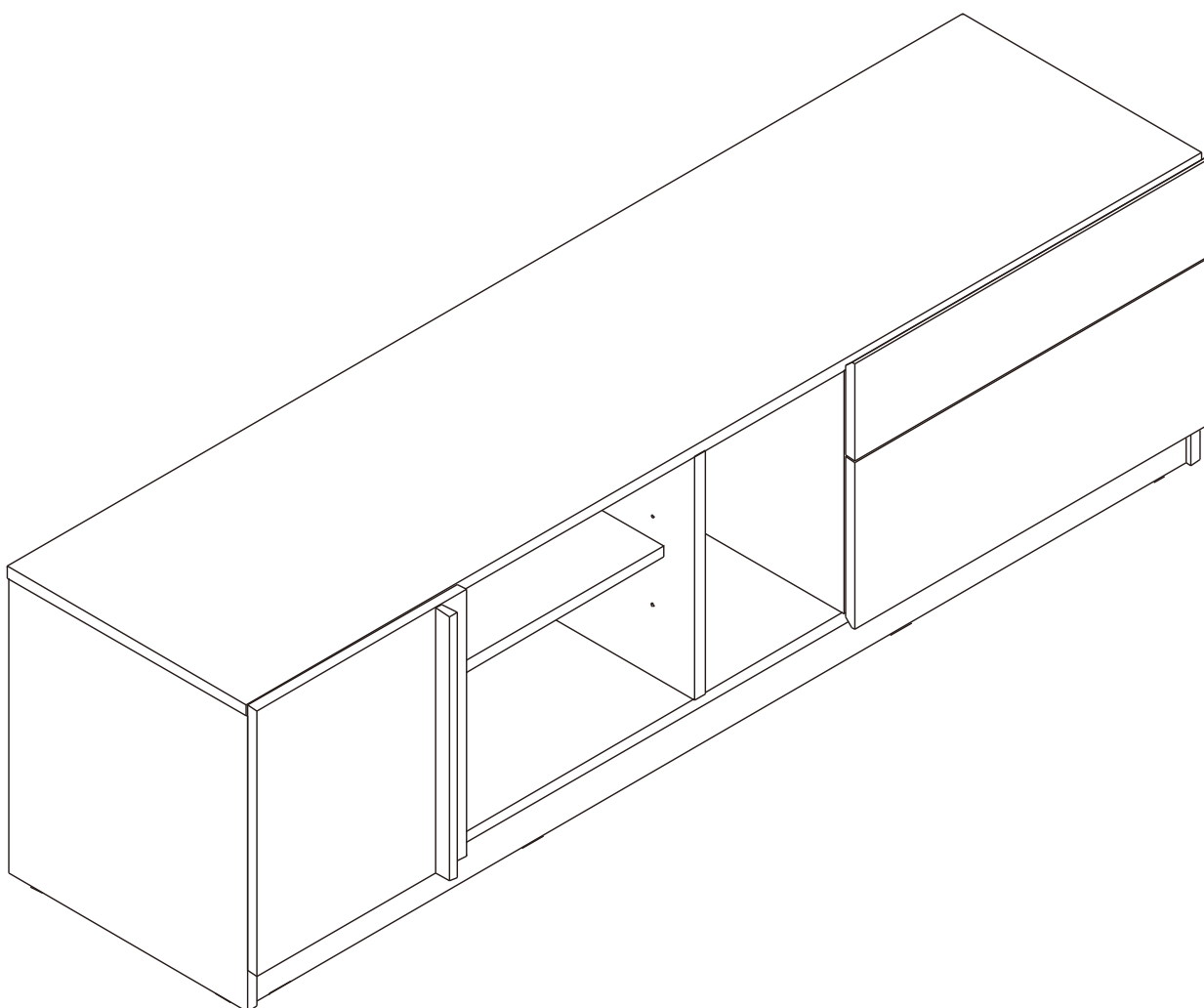
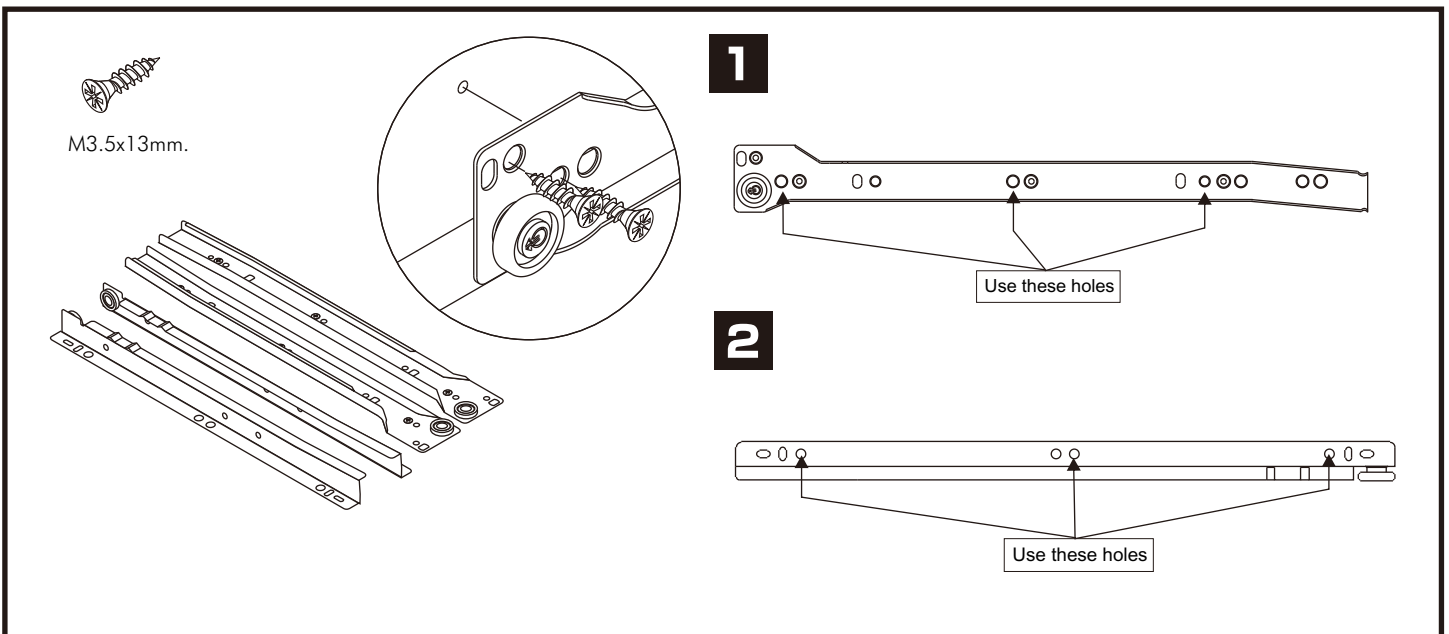
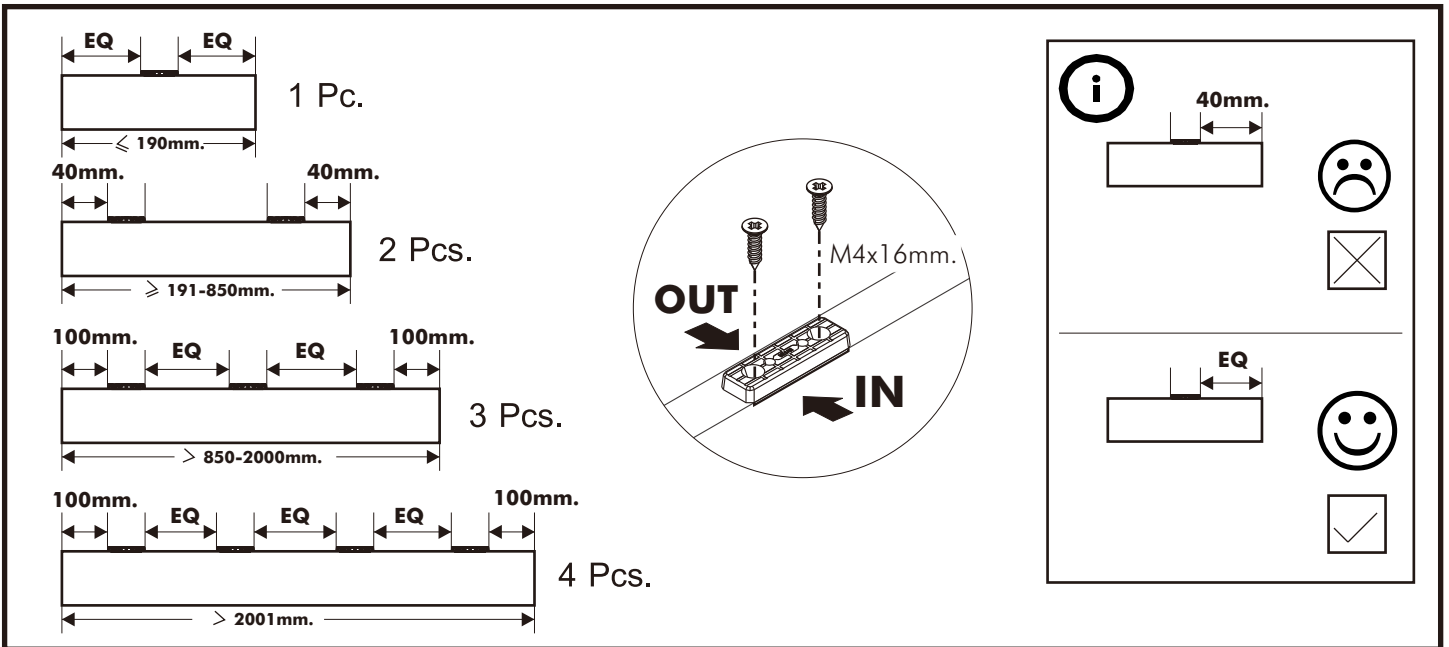
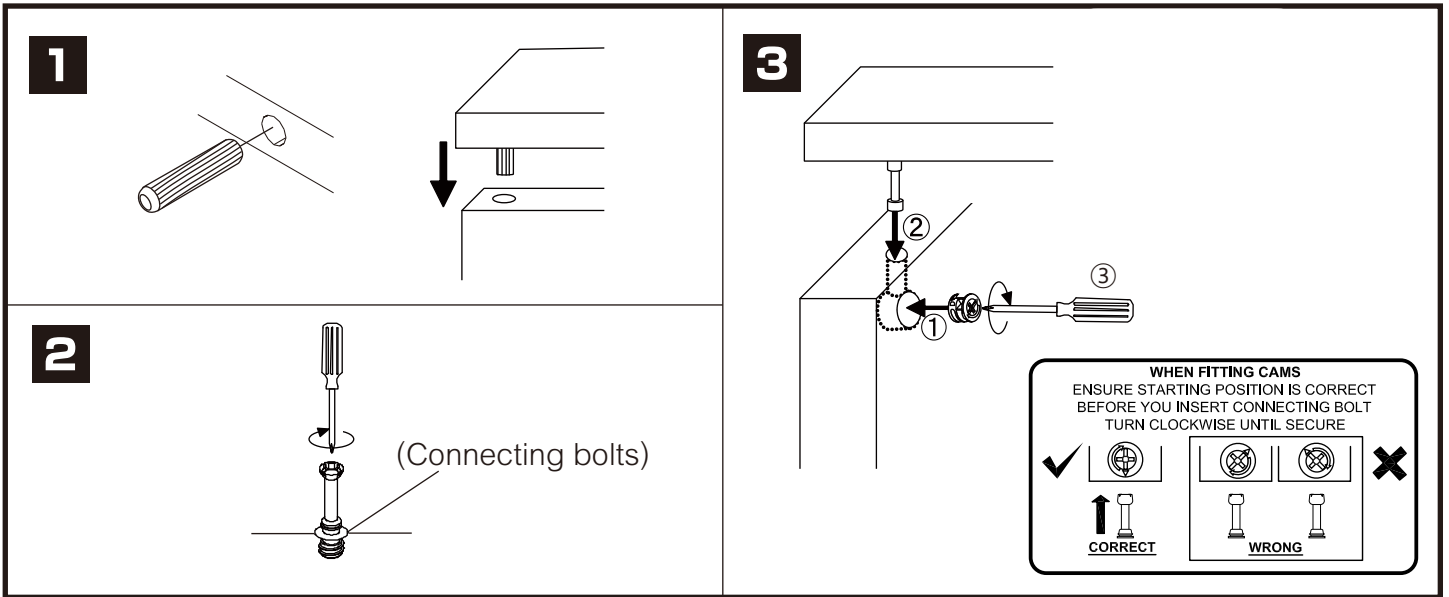


HARSH-P

TV cabinet 160cm.

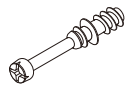


CONNECT SYSTEM



HARDWARE

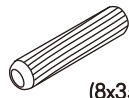
-BODY SET



x 14



x 14



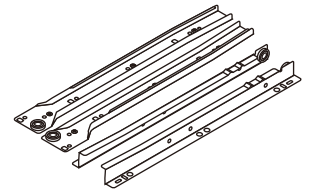
(8x35)

x 20



M4x40mm.

x 26



x 2



M6x23

x 8



M3.5x13mm.

x 28

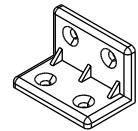


M4x20mm.

x 4



x 4



x 6



M4x16mm.

x 56



M4x25mm.

x 2

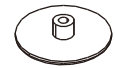


M4x50mm.

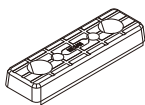
x 8



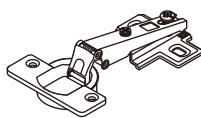
x 2



x 6



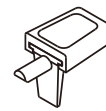
x 12



x 2



x 1



x 4

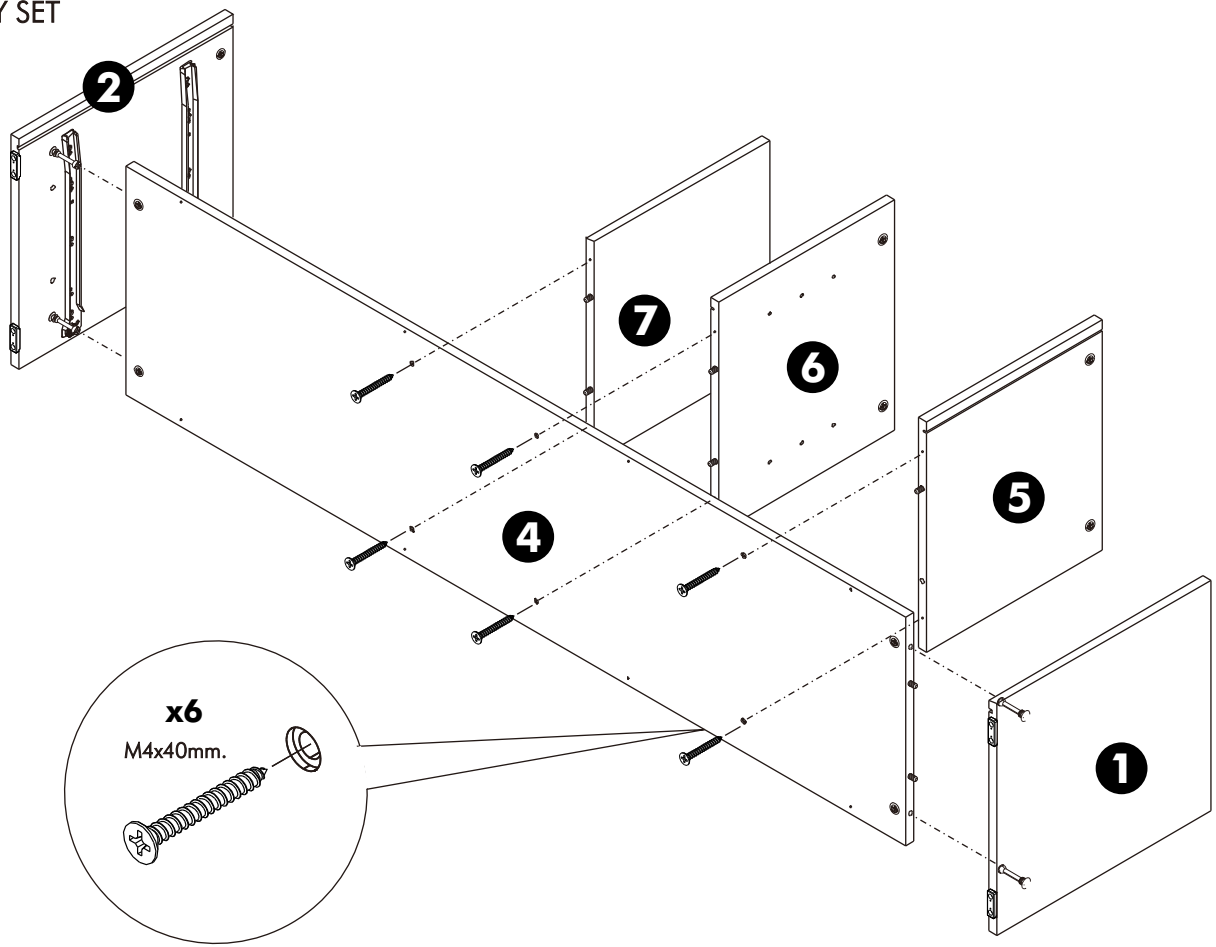


x 2

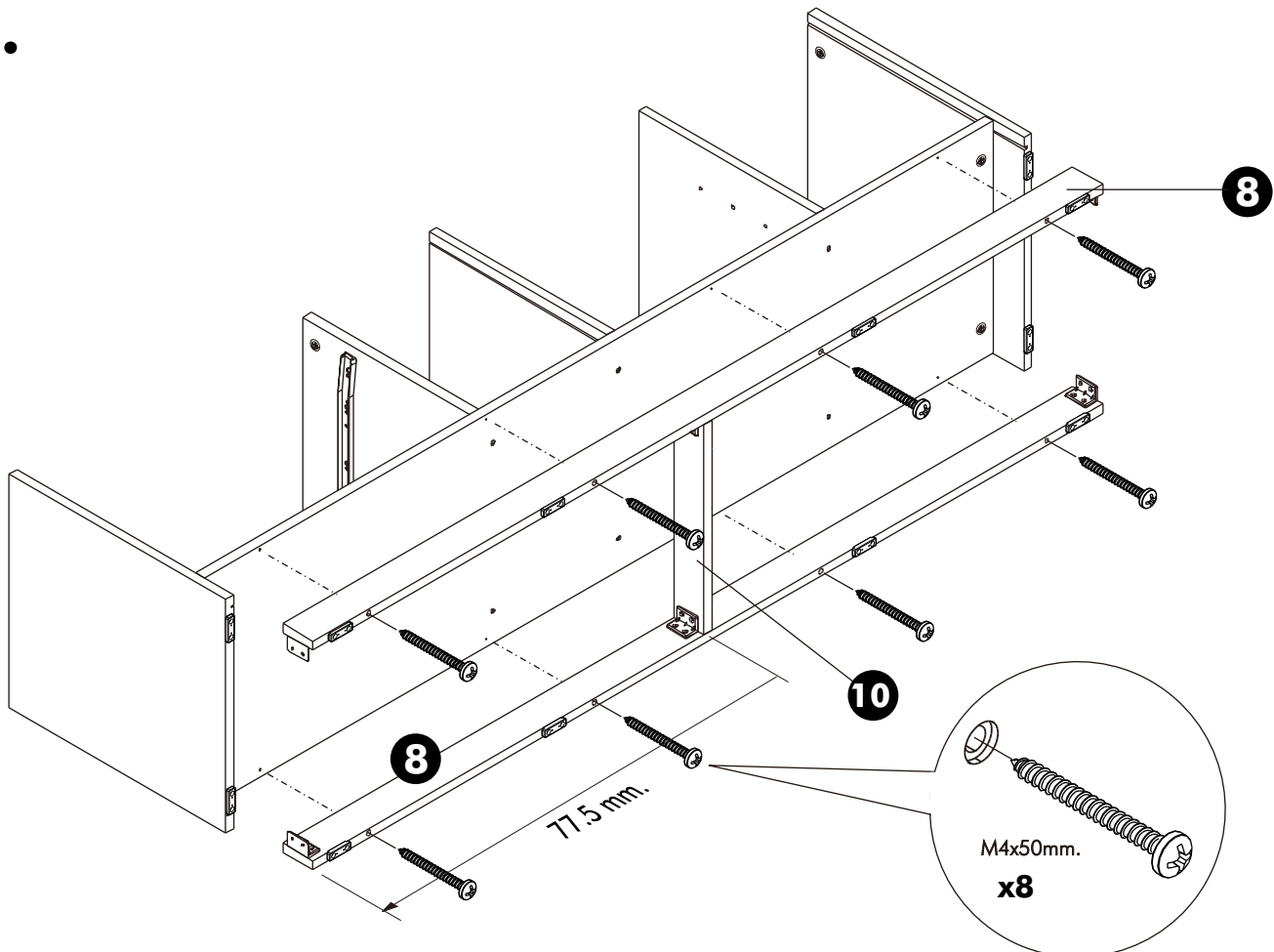
ASSEMBLY

-BODY SET

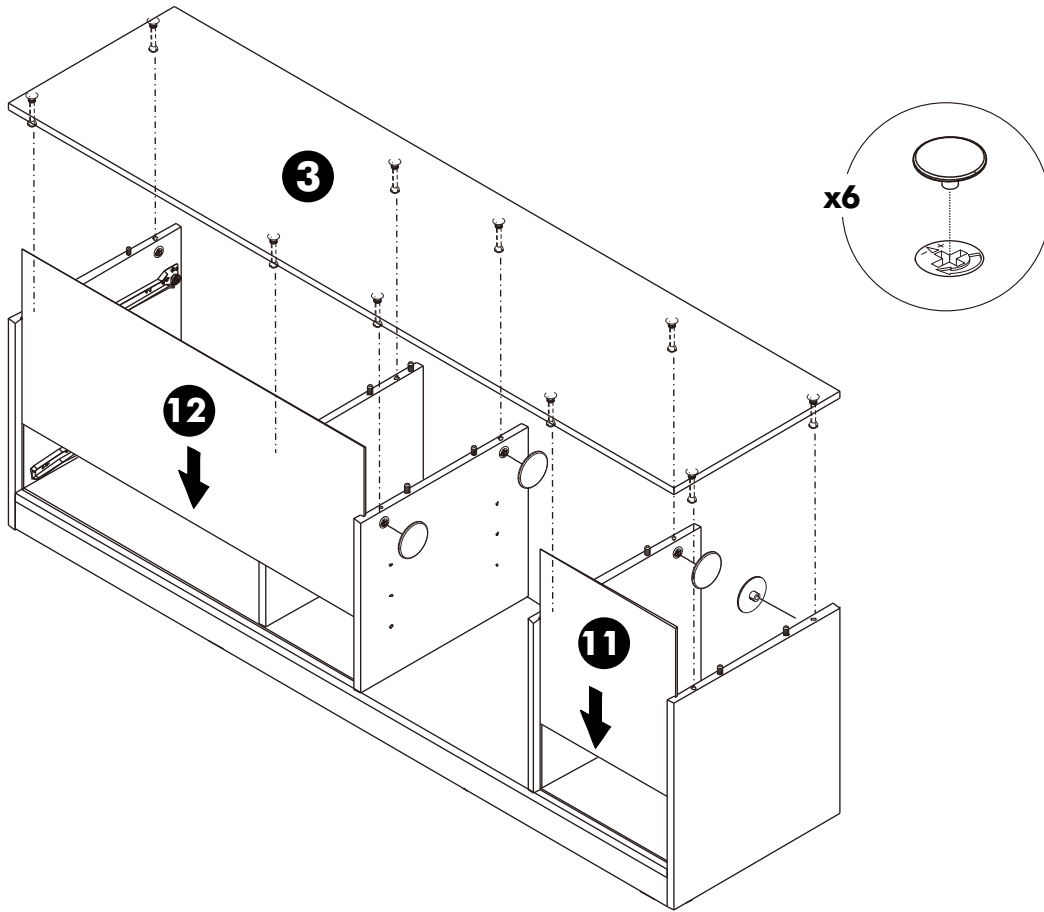
1.



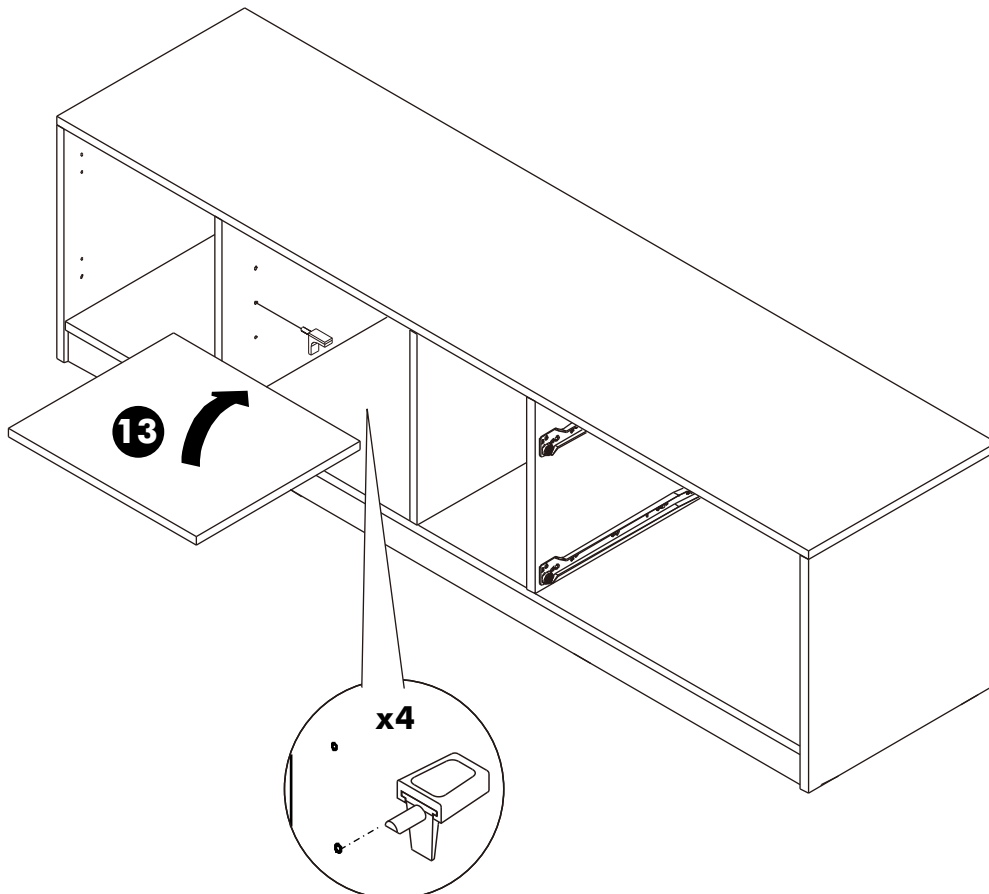
2.



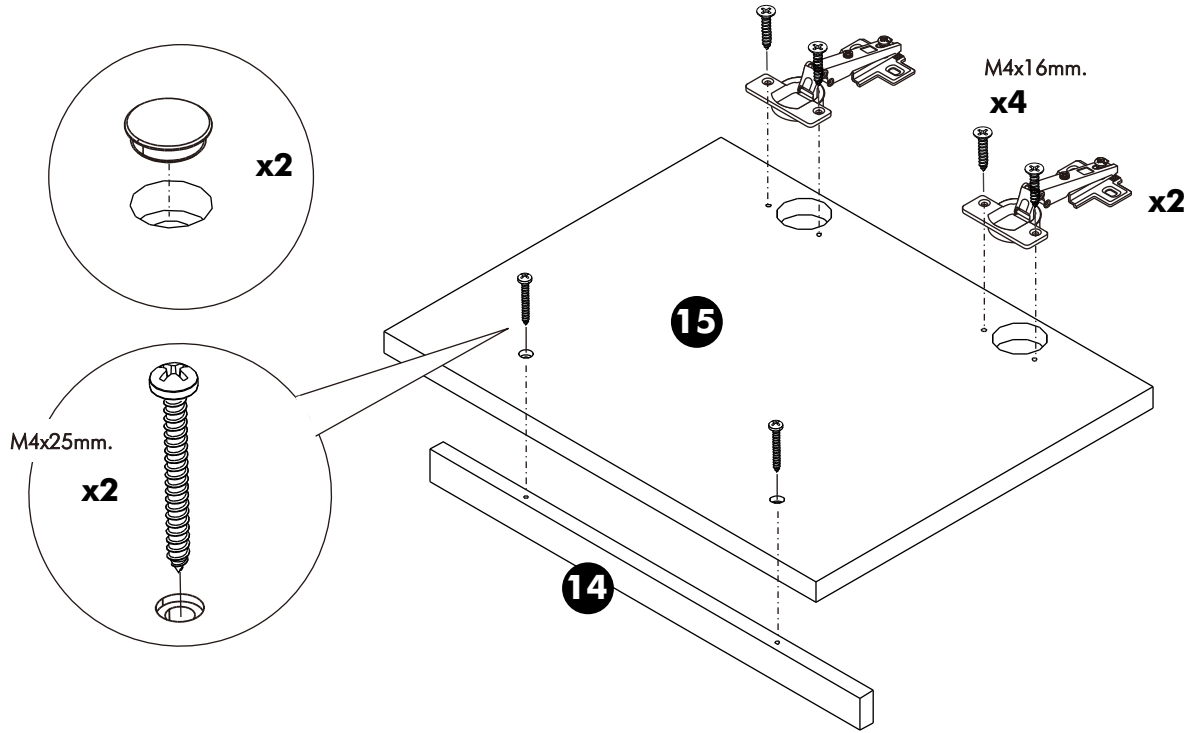
3.



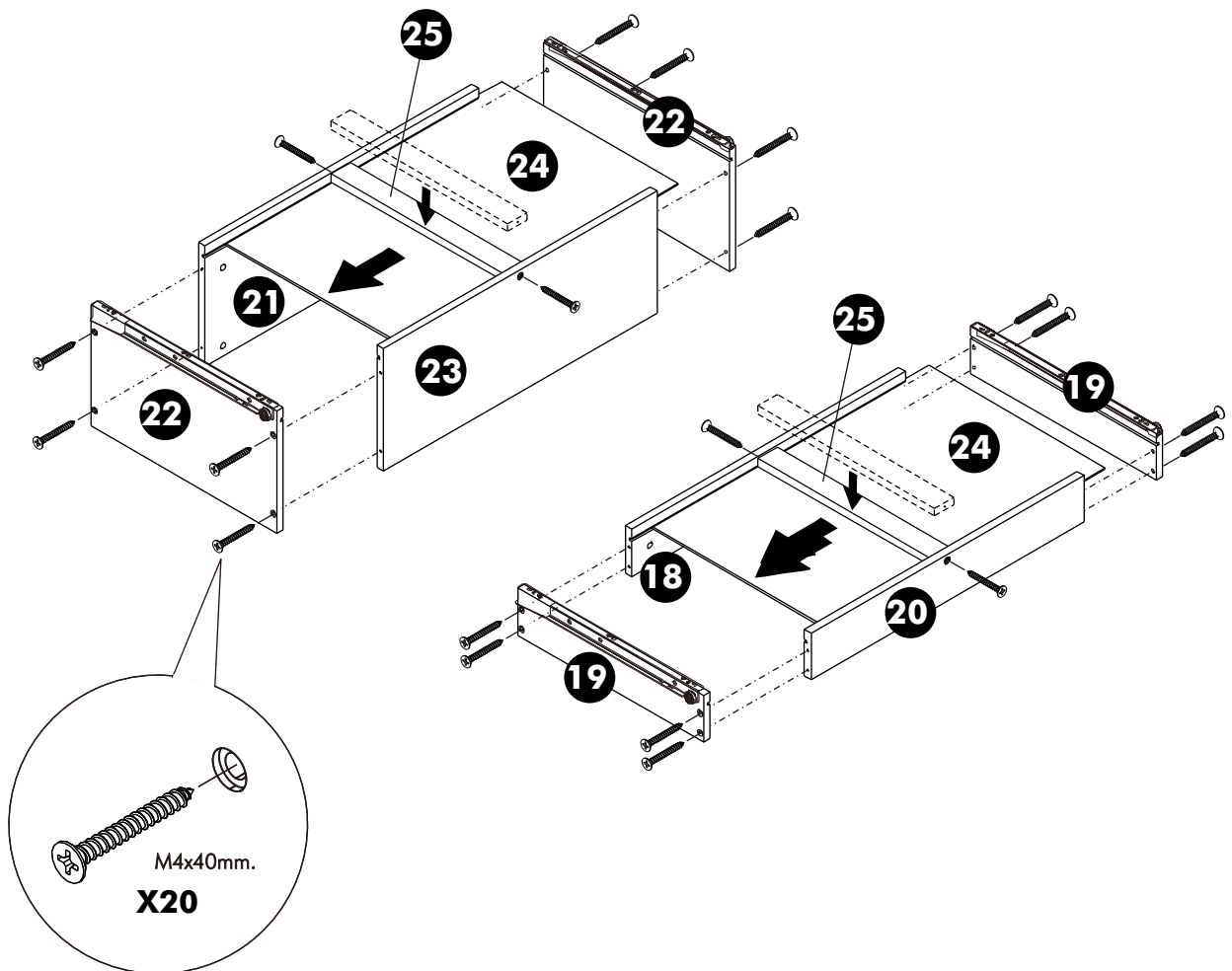
4.



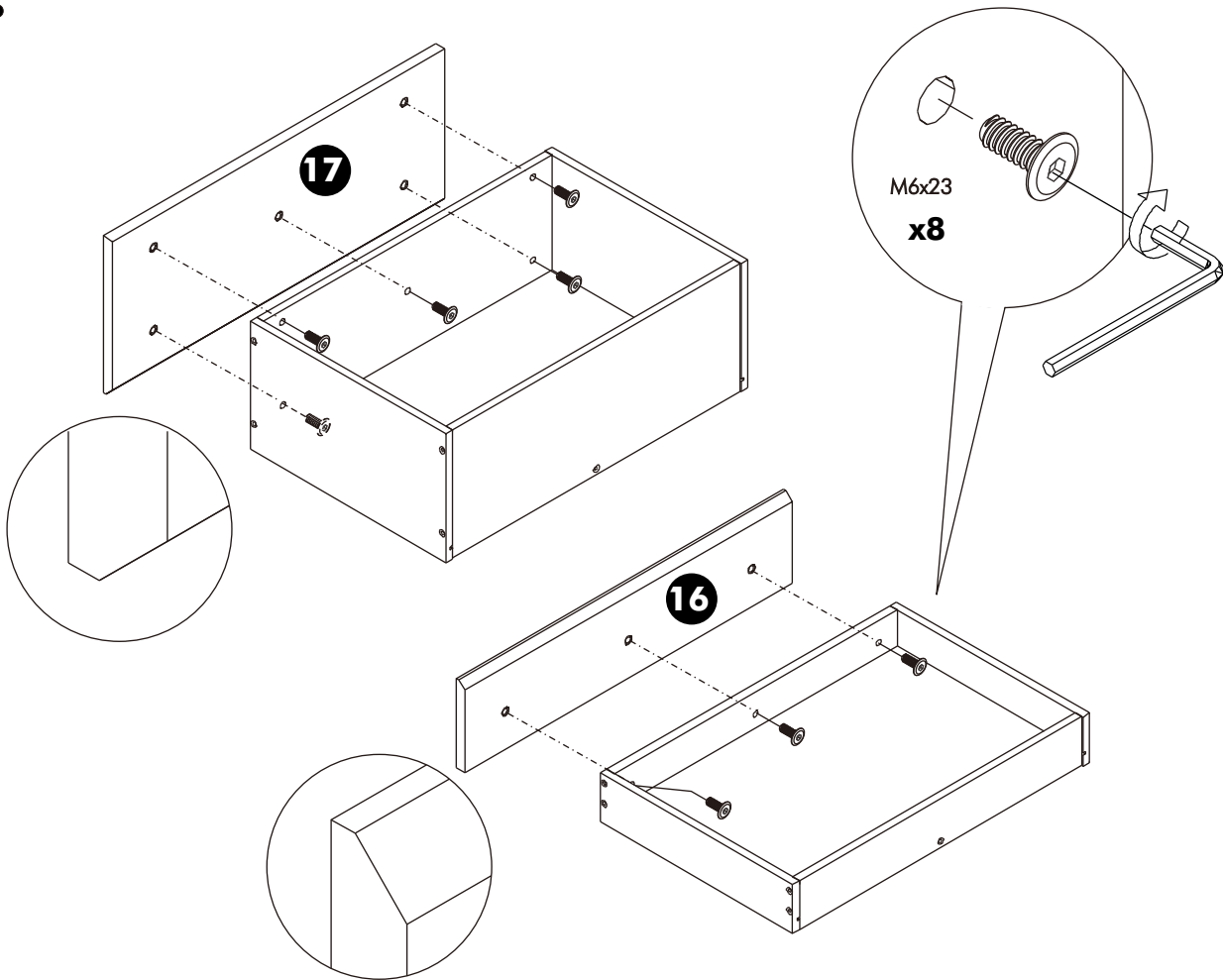
5.



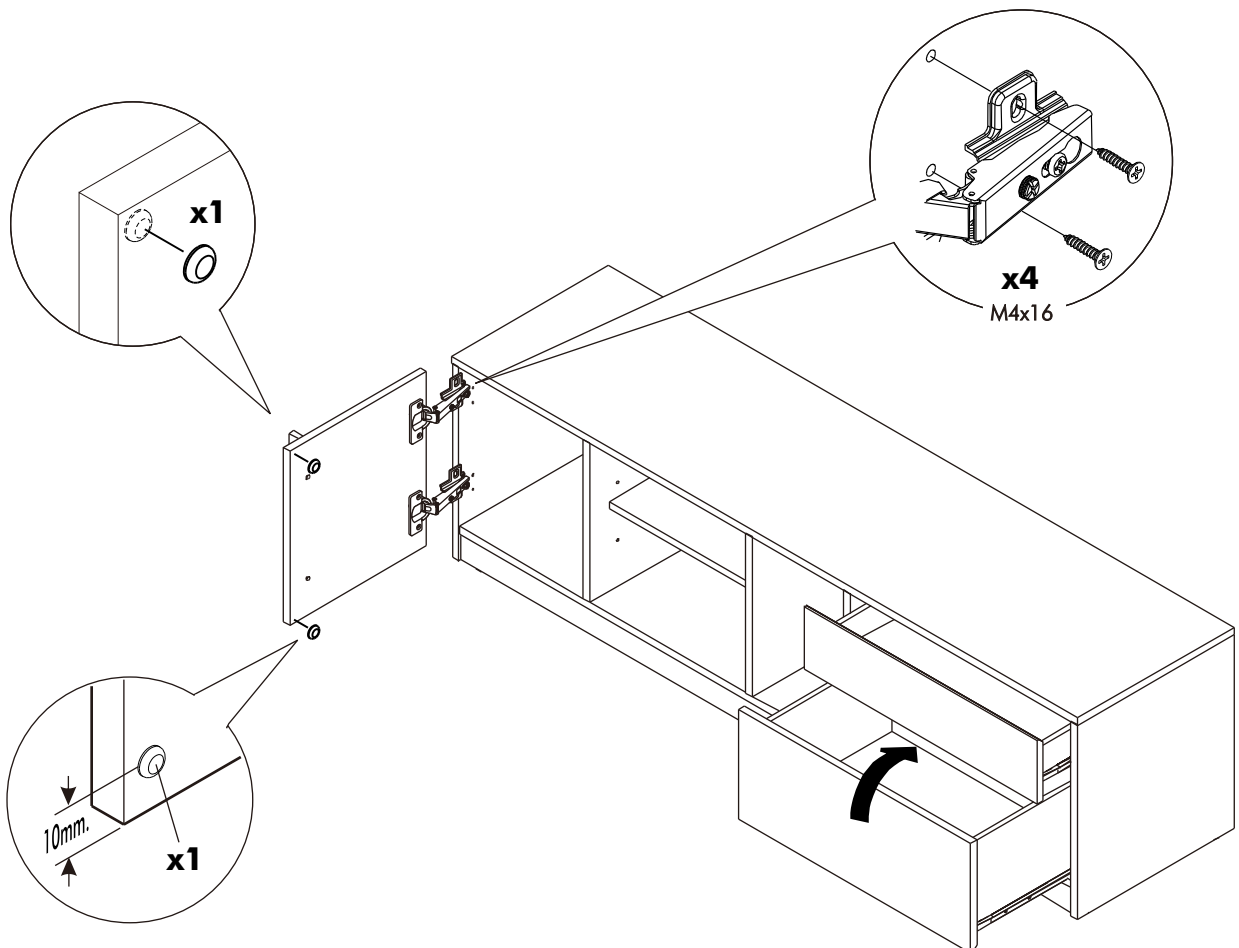
6.



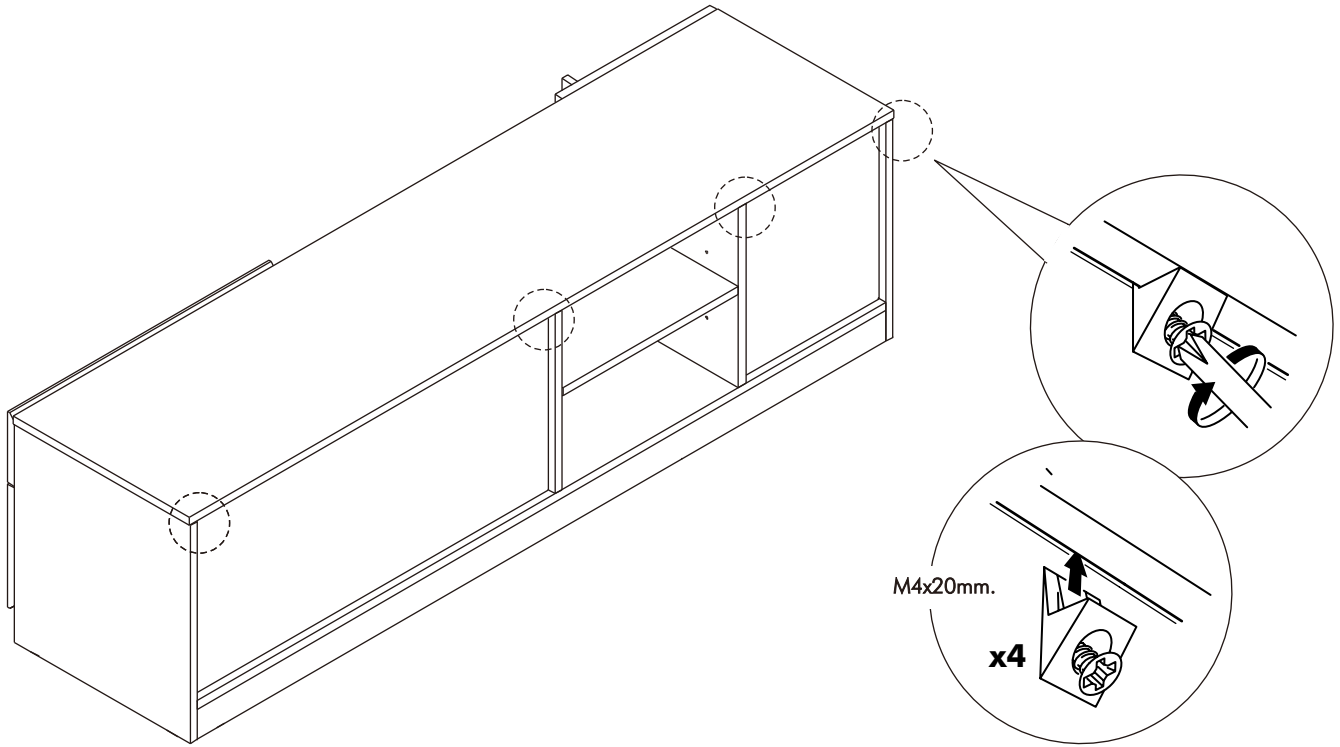
7.



8.



9.



i

AFTER FINISHED ASSEMBLY.

INCASE OF GAP BETWEEN DRAWERS ARE NOT ALIGN.
PLEASE ADJUST AS BELOW.
1. LOOSE SCREW A LITTLE BIT.
2. THEN MOVE FRONT DRAWER TO ALIGNMENT POSITION.
3. TIGHTEN SCREW.