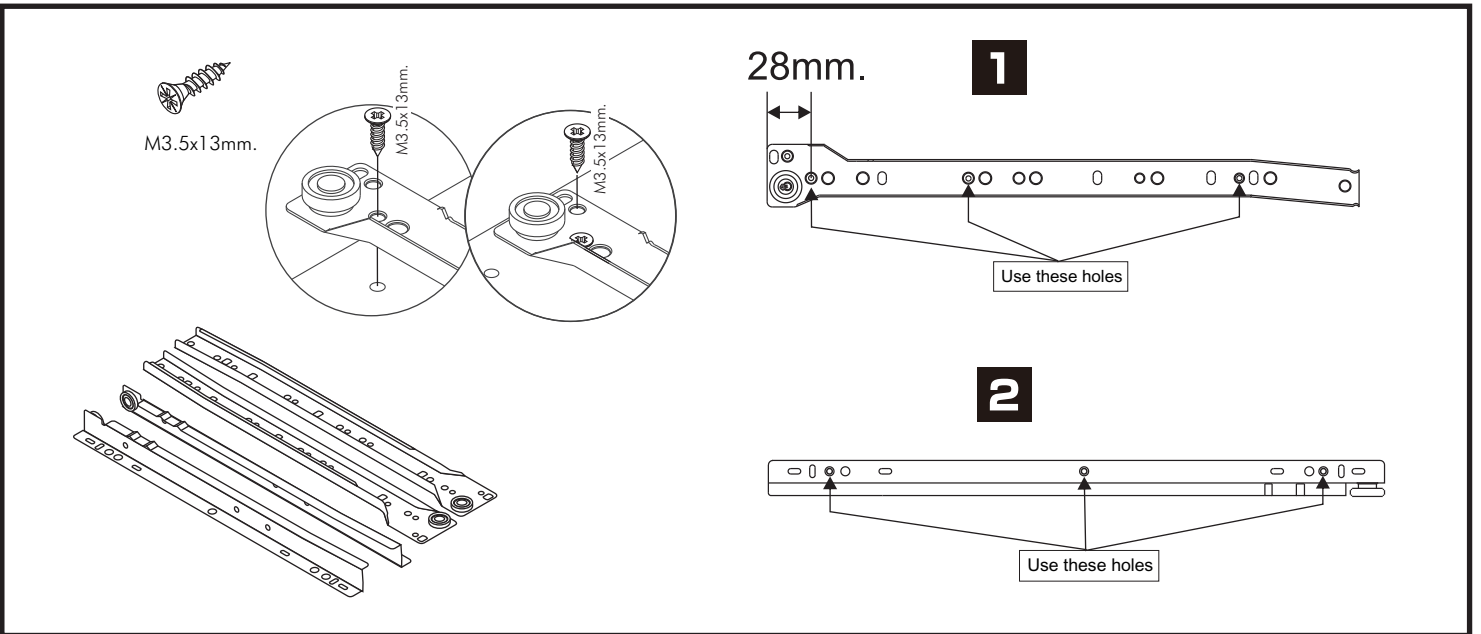
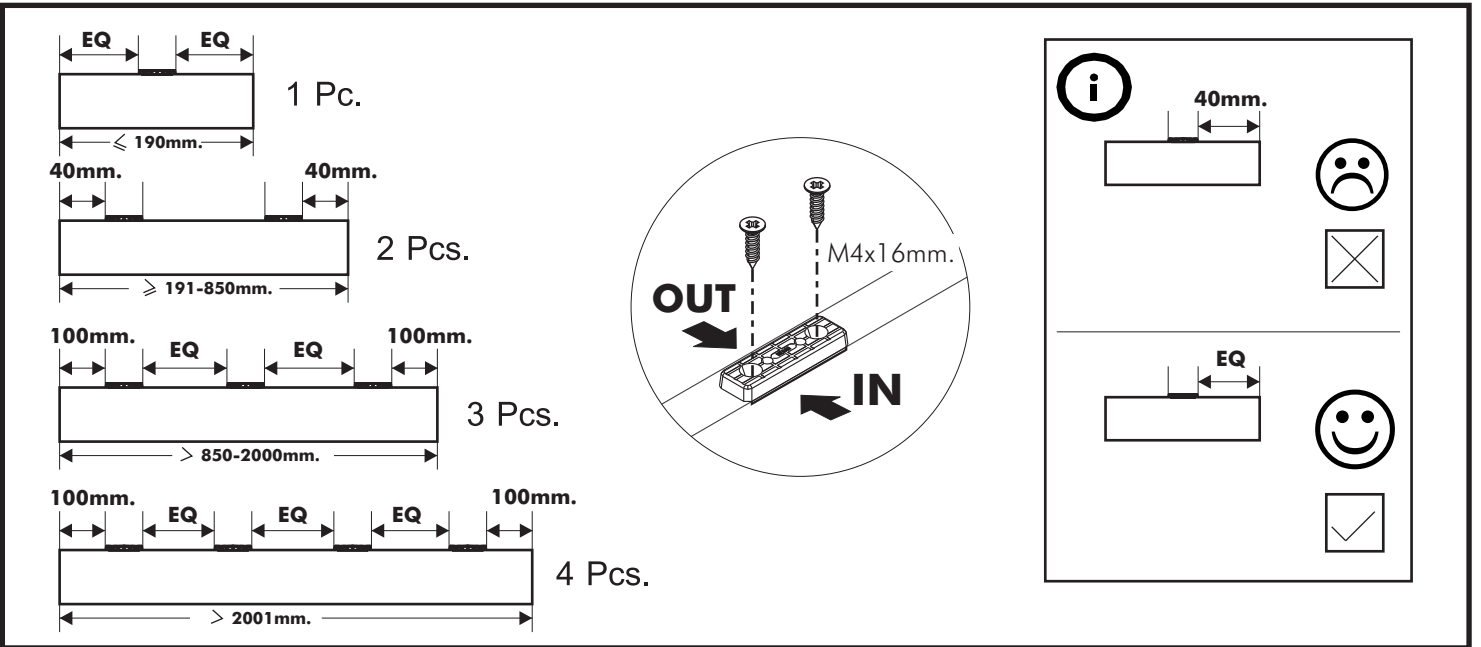
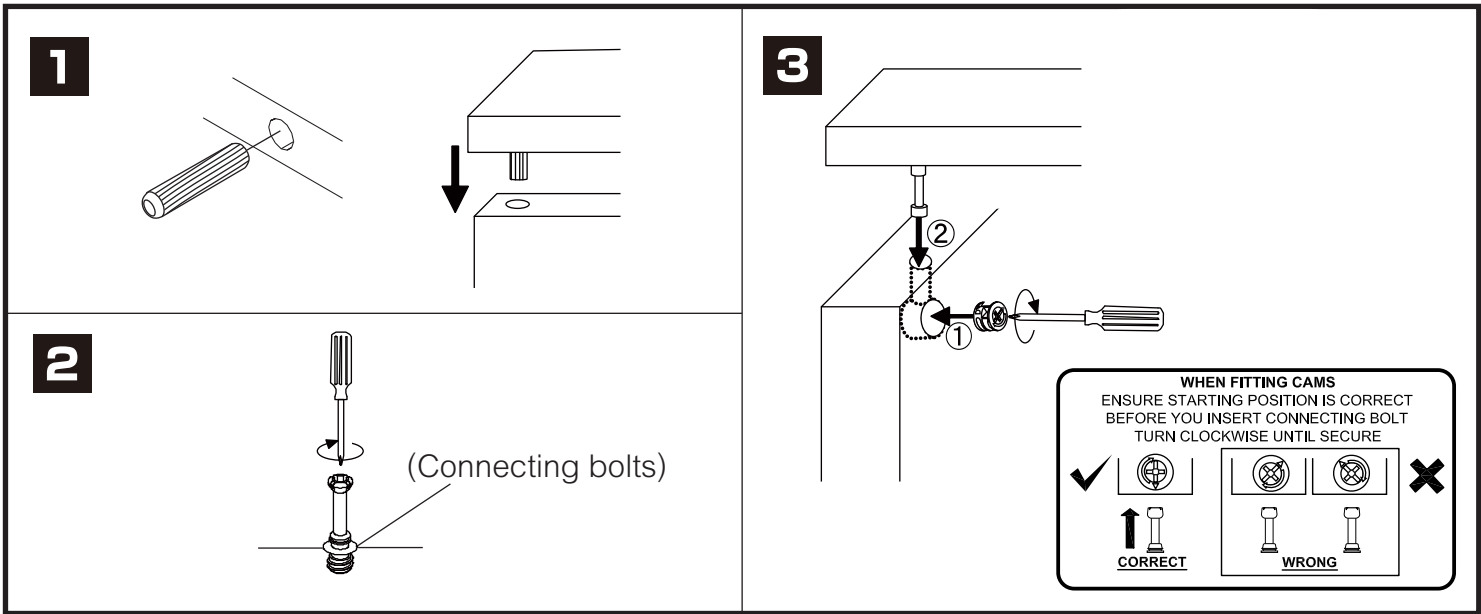


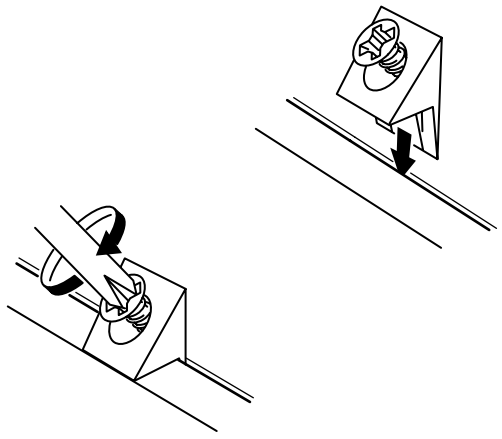
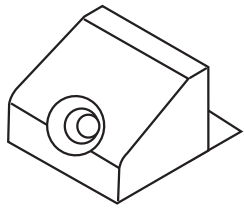
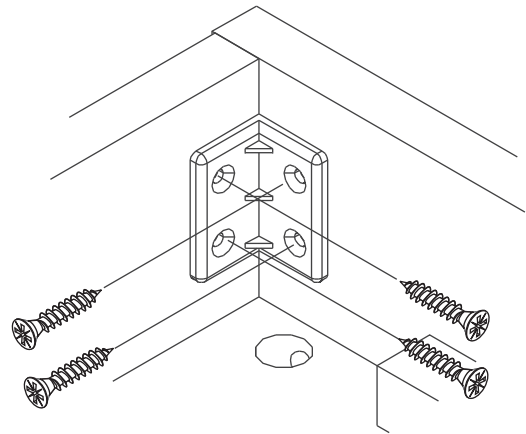
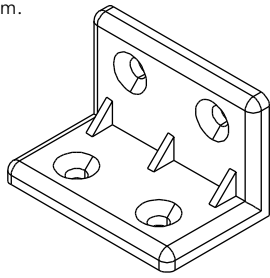
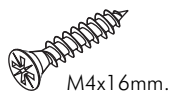
ROME

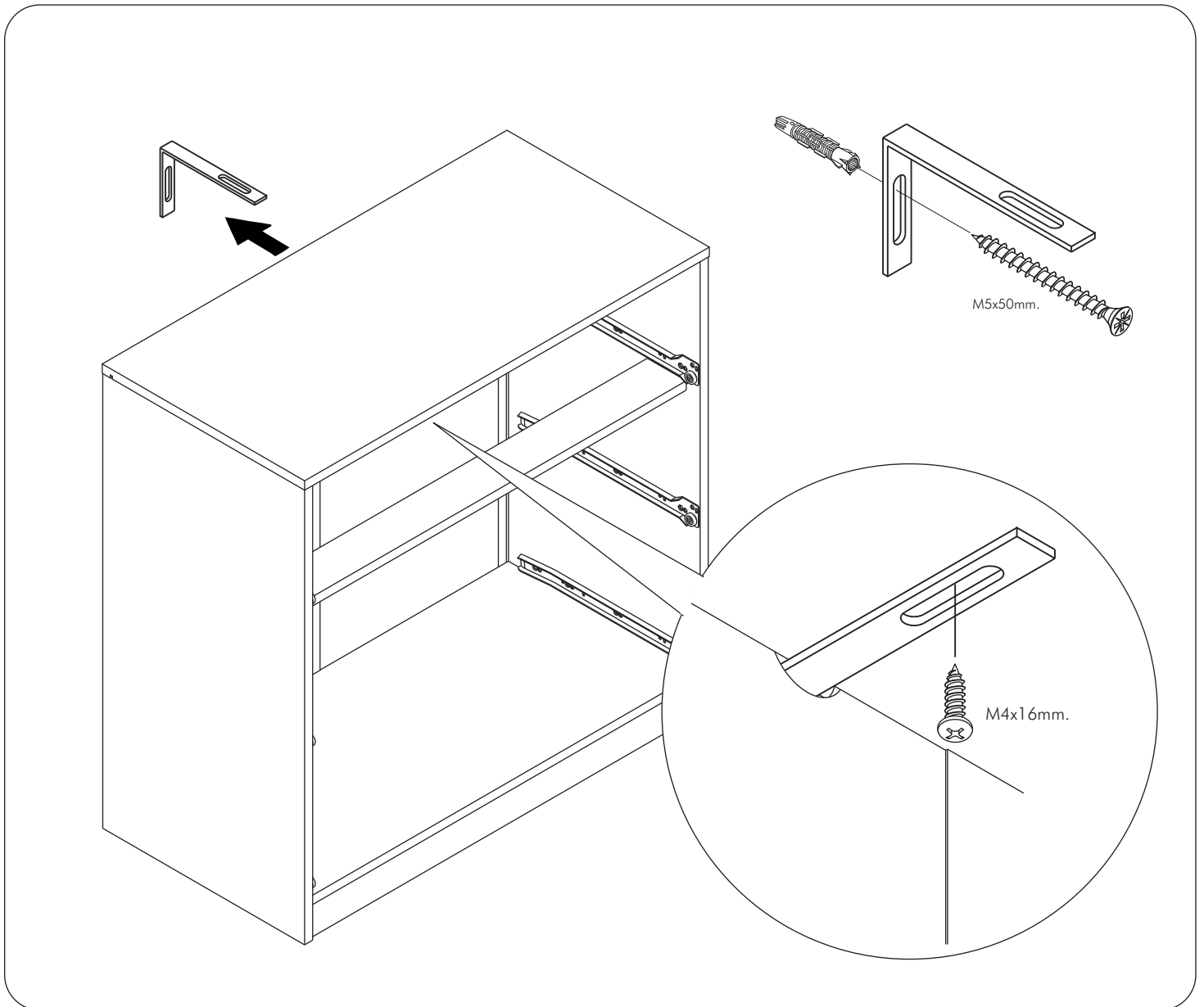
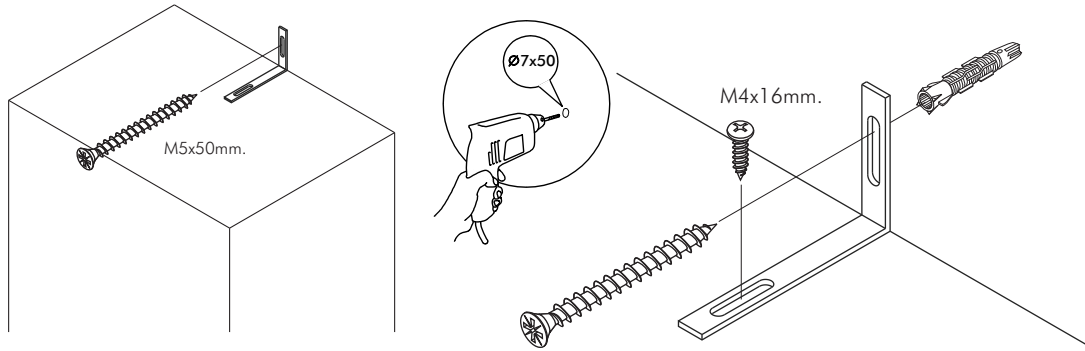
Chest 4 Drawers



CONNECT SYSTEM

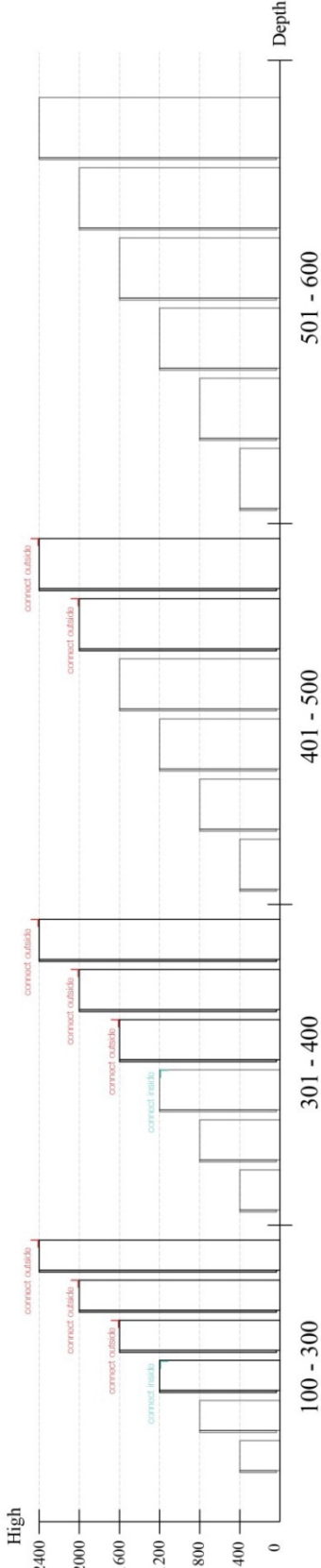
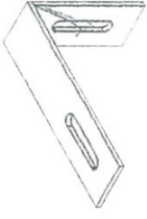






■ The Standard for identifying which mounted safety fall protection fitting to use **Note : That children's products must be installed with all anti-falling fittings.**

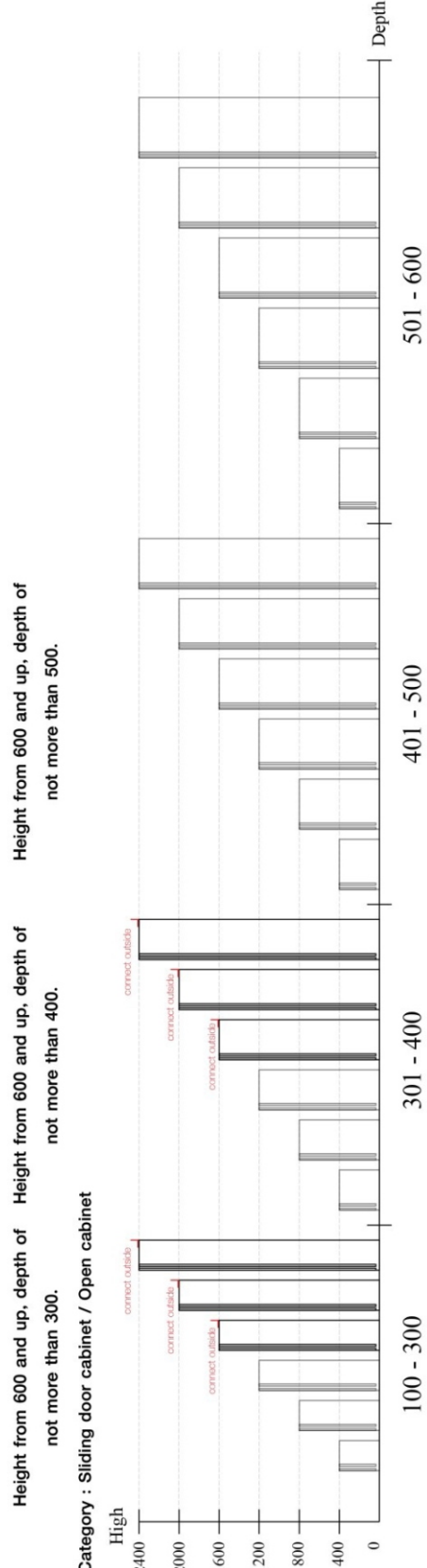
■ Mounted fall protection fittings



Category : Cabinet with open doors
 Height from 1200 and up, depth of Height from 2000 and up, depth of not more than 500.
 not more than 400.



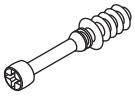
Category : Chest of drawers
 Height from 600 and up, depth of Height from 600 and up, depth of not more than 500.
 not more than 400.



Category : Sliding door cabinet / Open cabinet
 Height from 1600 and up, depth of Height from 1600 and up, depth of not more than 400.
 not more than 300.

HARDWARE

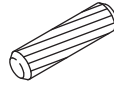
-BODY SET



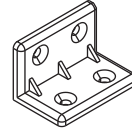
x 4



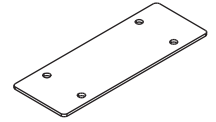
x 4



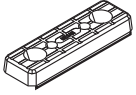
x 16



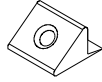
x 12



x 2



x 8



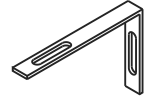
x 6



x 3



x 1

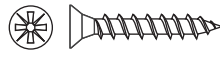


x 1



M5x50mm.

x 1



M3.5x20mm.

x 6



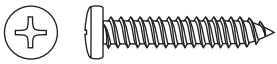
M4x16mm.

x 64



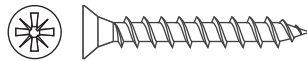
M4x16mm.

x 8



M4x25mm.

x 8



M4x30mm.

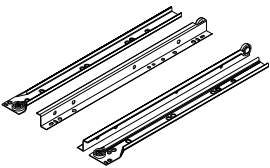
x 6



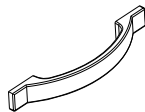
M4x13mm.

x 11

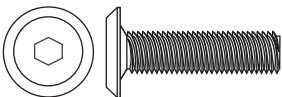
-DRWAER SET



x 4 set

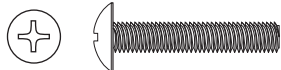


x 4



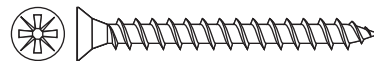
M6x23mm.

x 10



M4x22mm.

x 8



M4x40mm.

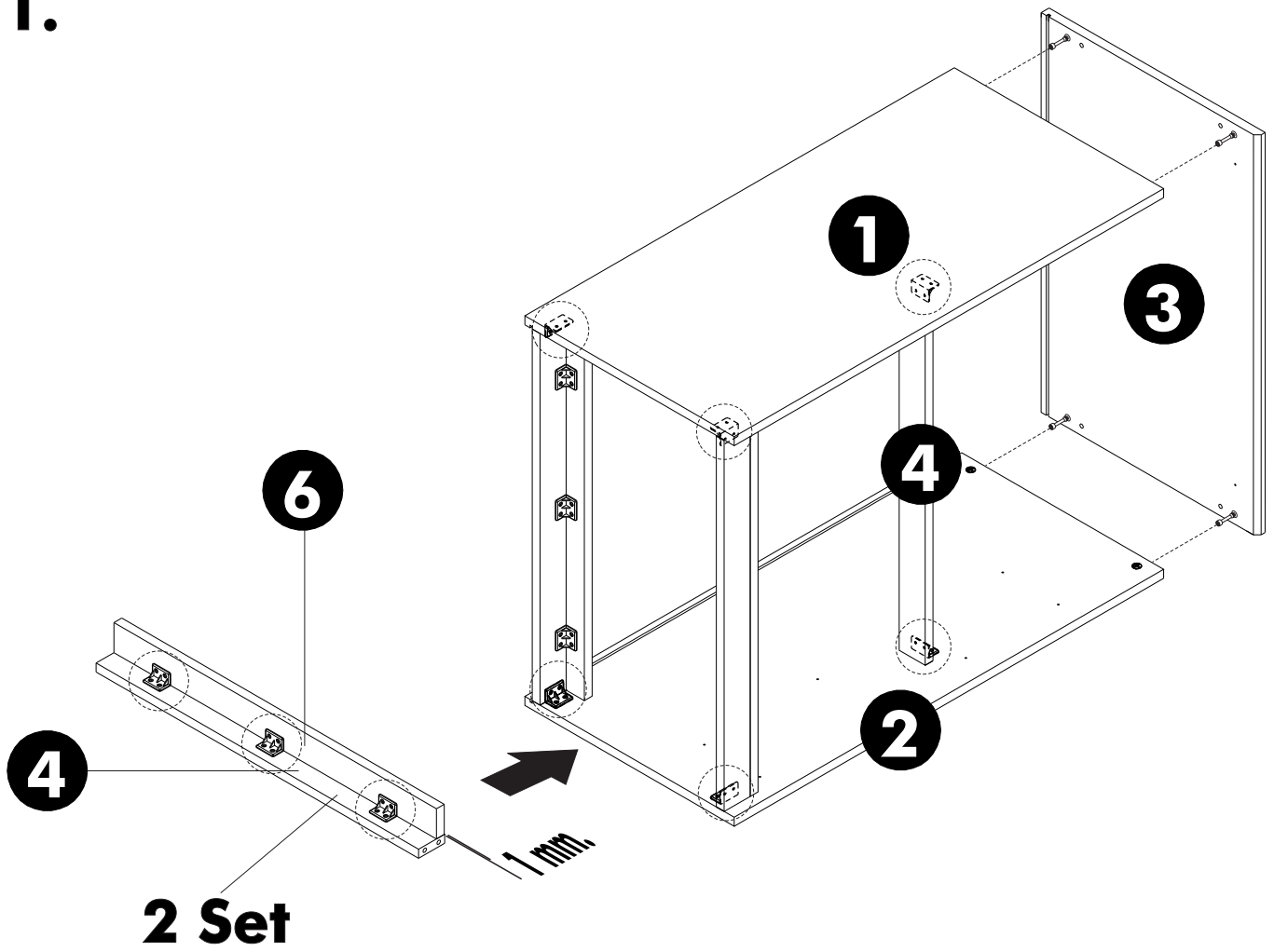
x 40



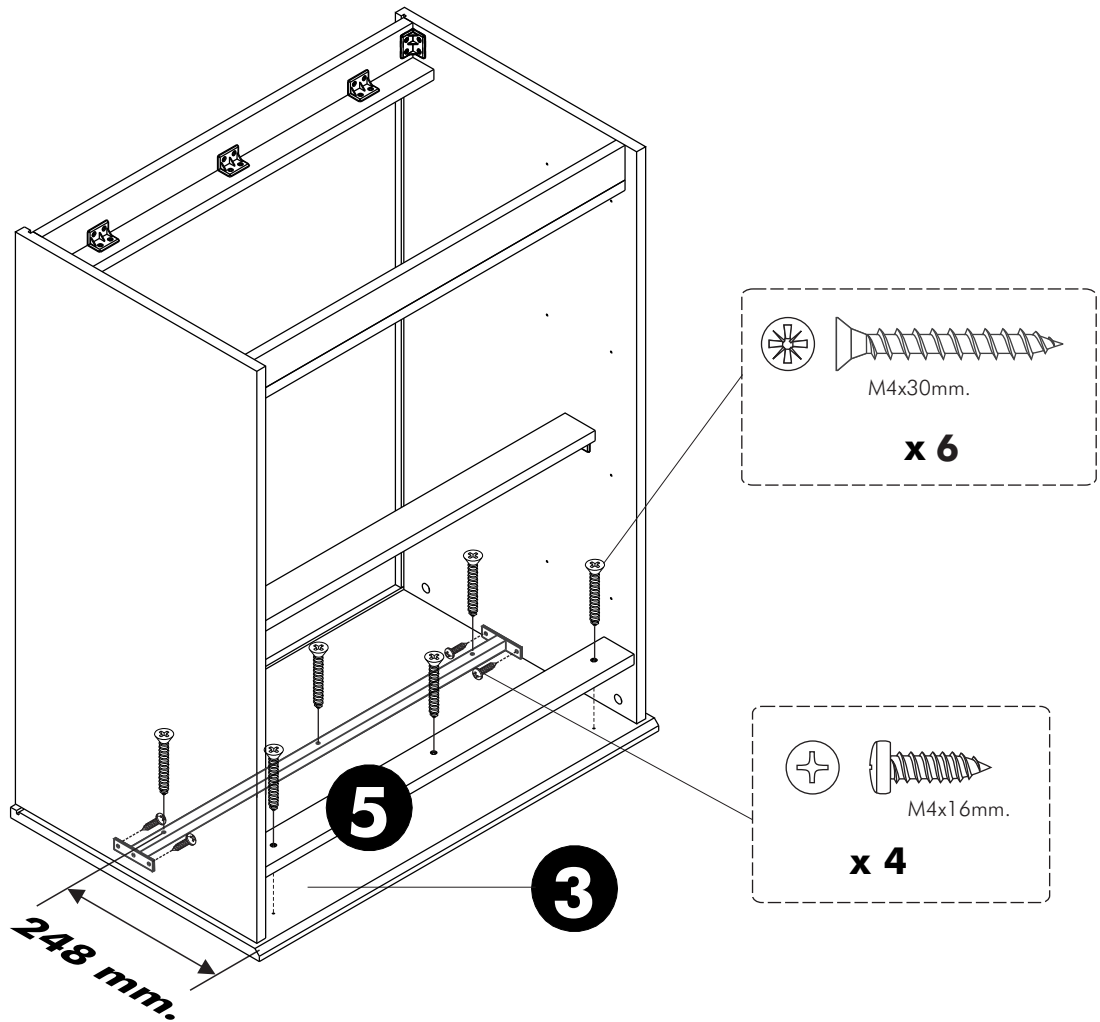
M3.5x13mm.

x 56

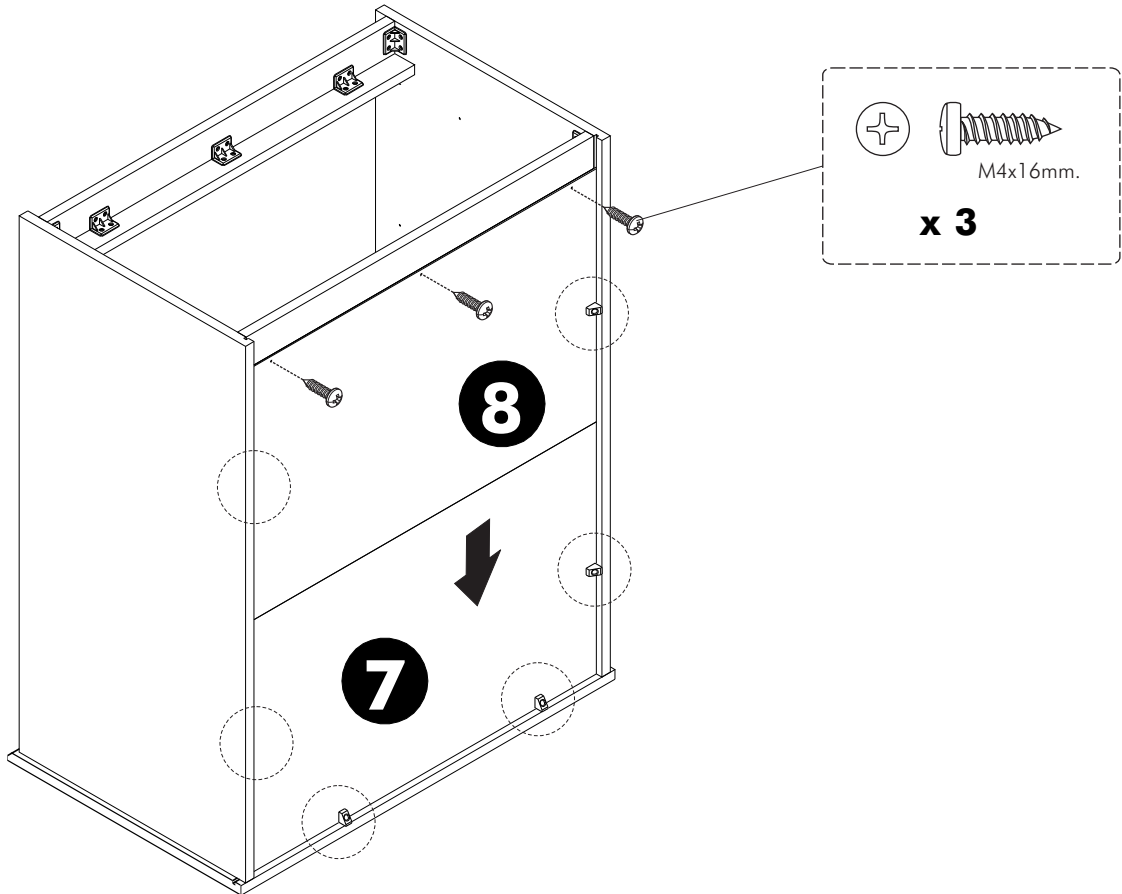
1.



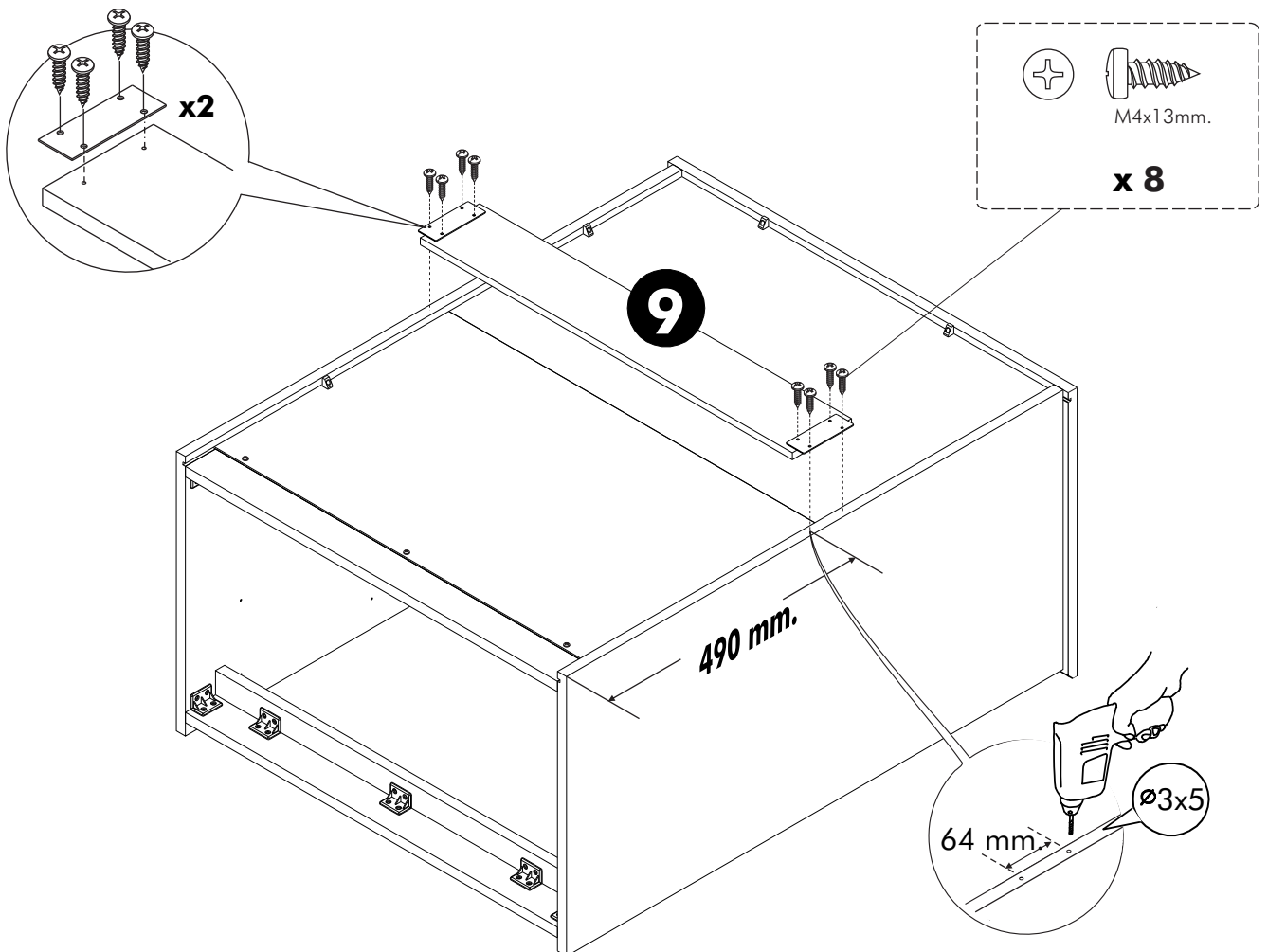
2.



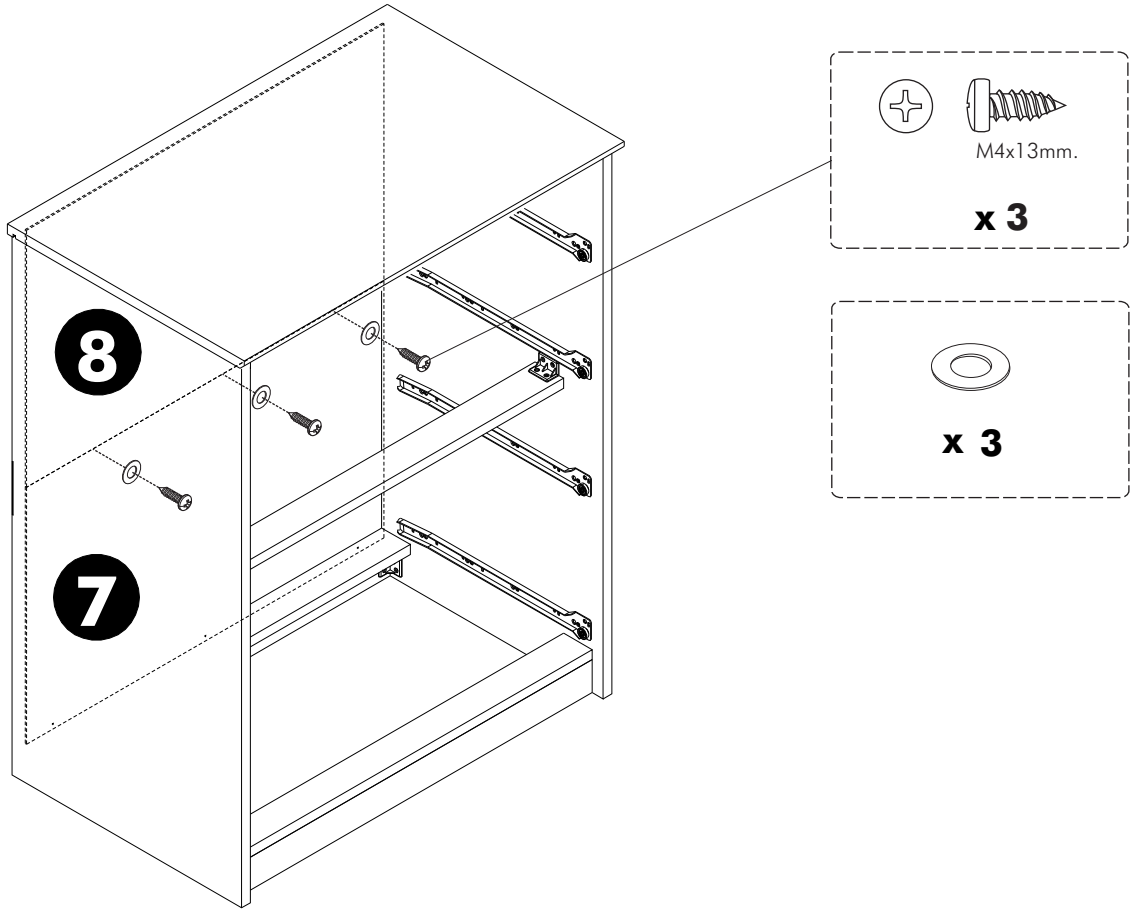
3.



4.



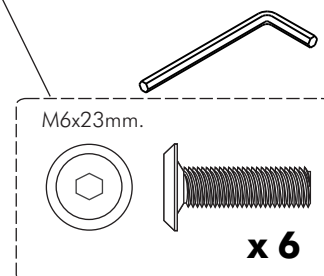
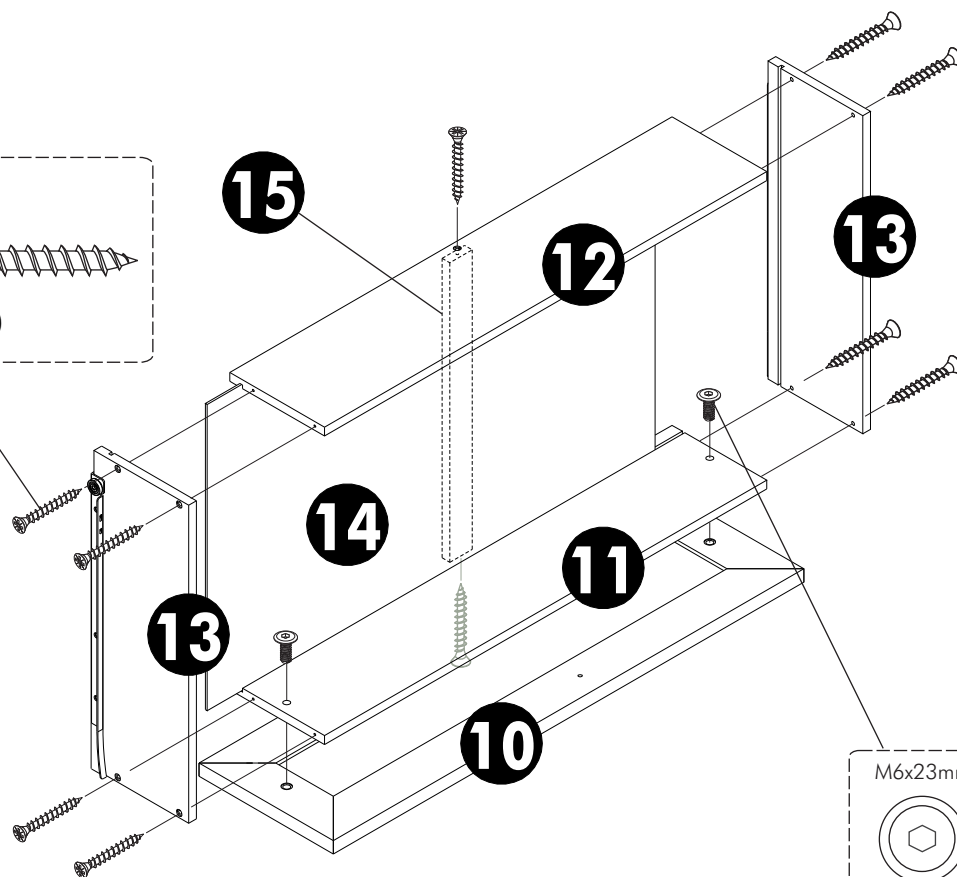
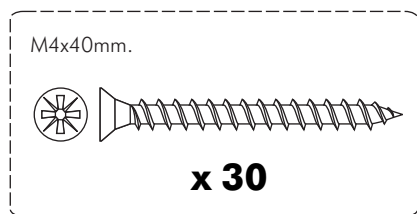
5.



6.

ASSEMBLY

-DRWAER SET



3 Set

