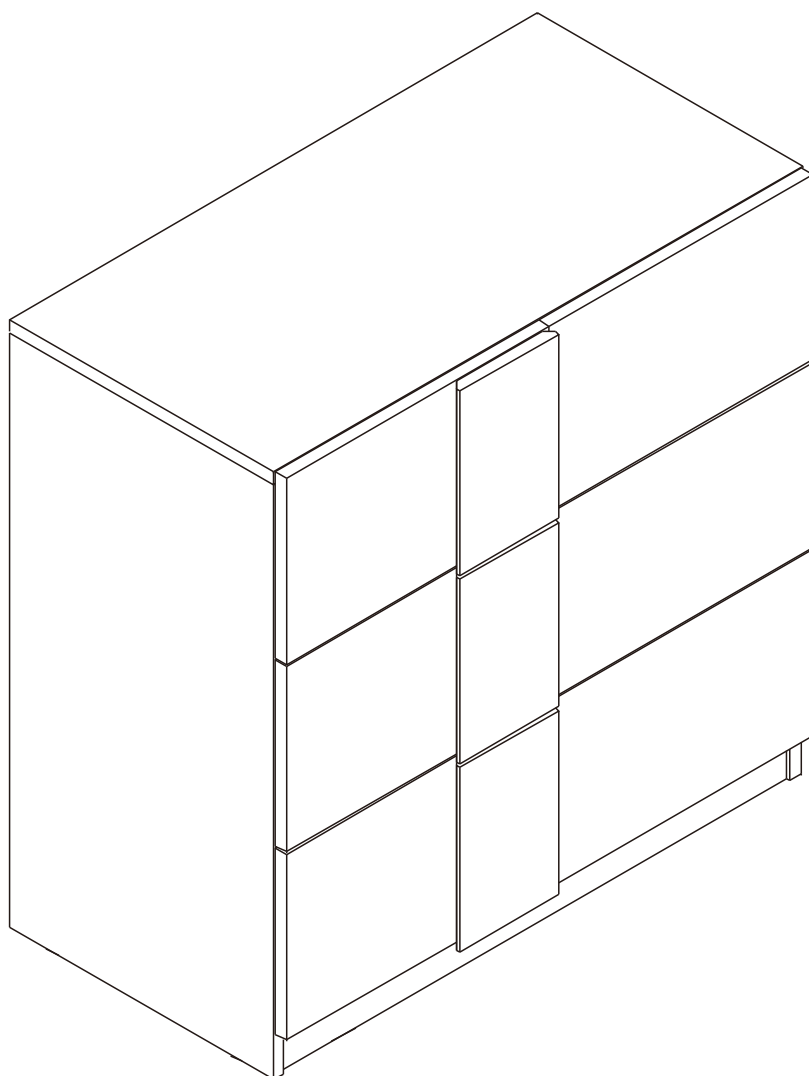
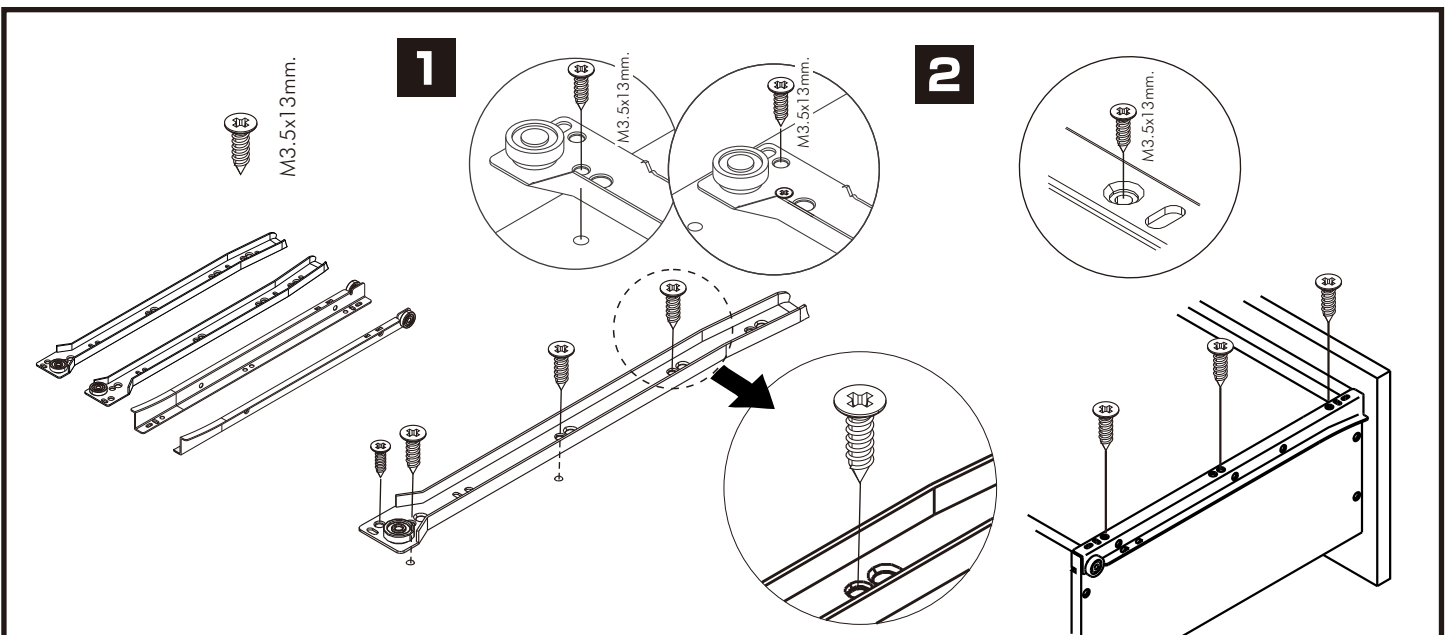
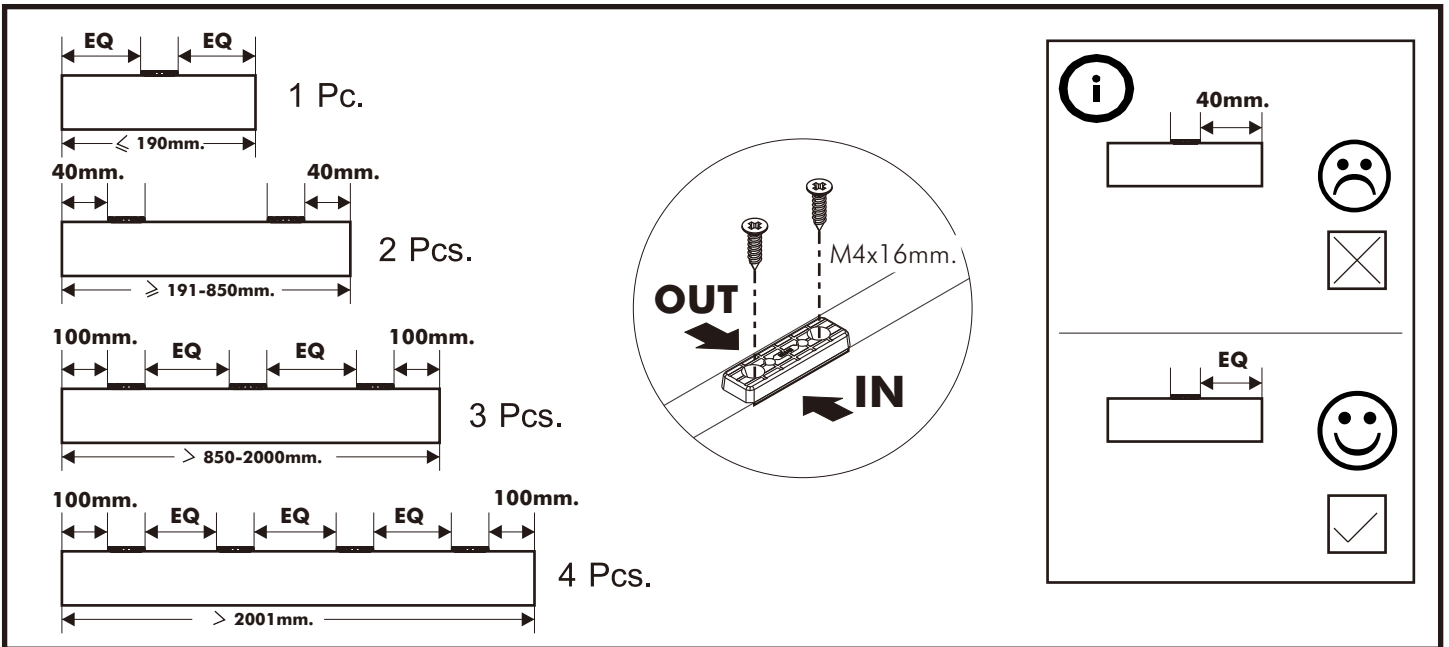
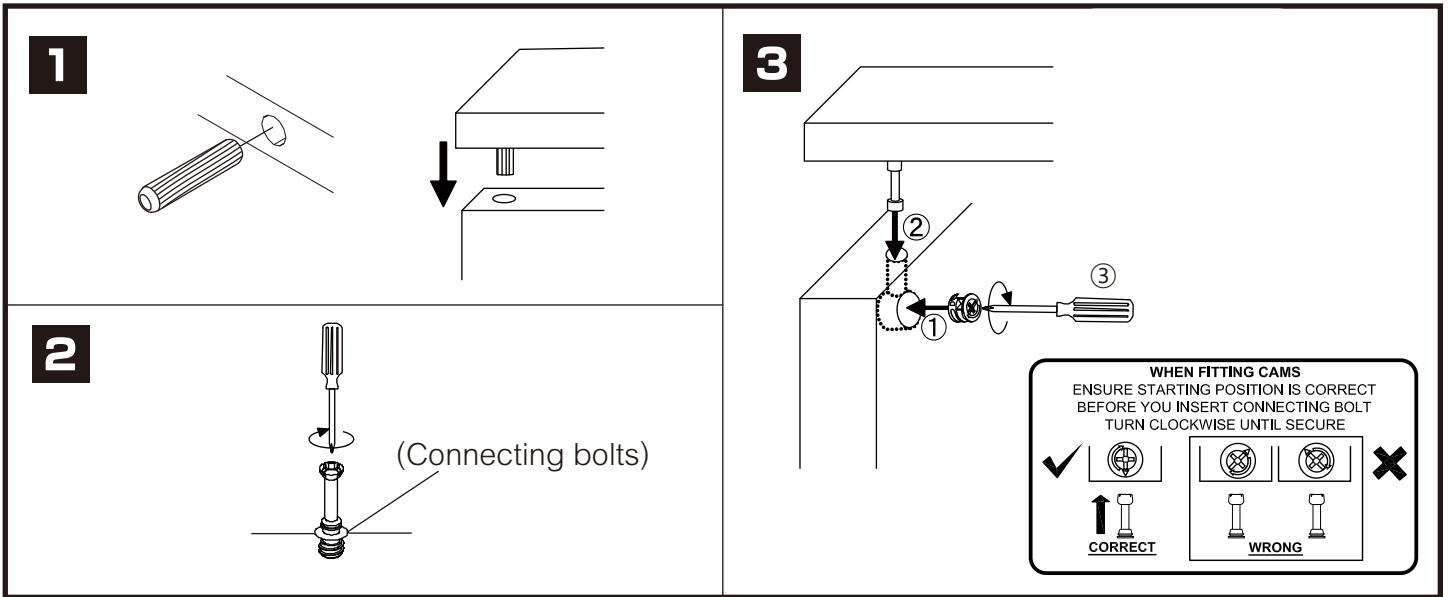


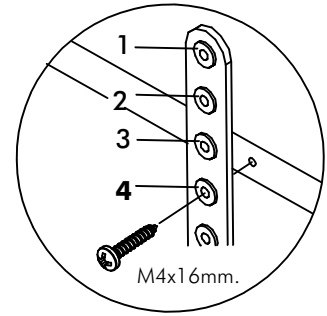
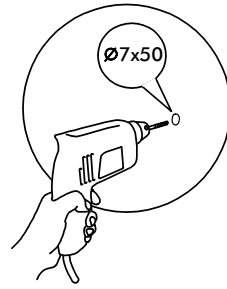
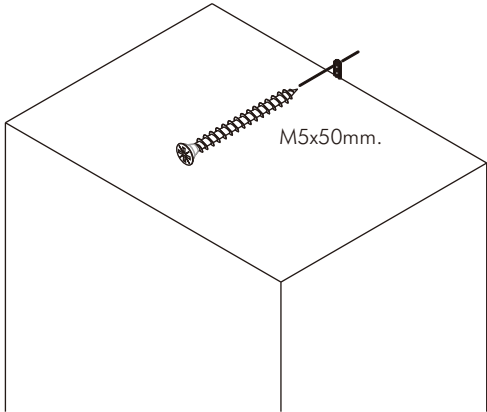
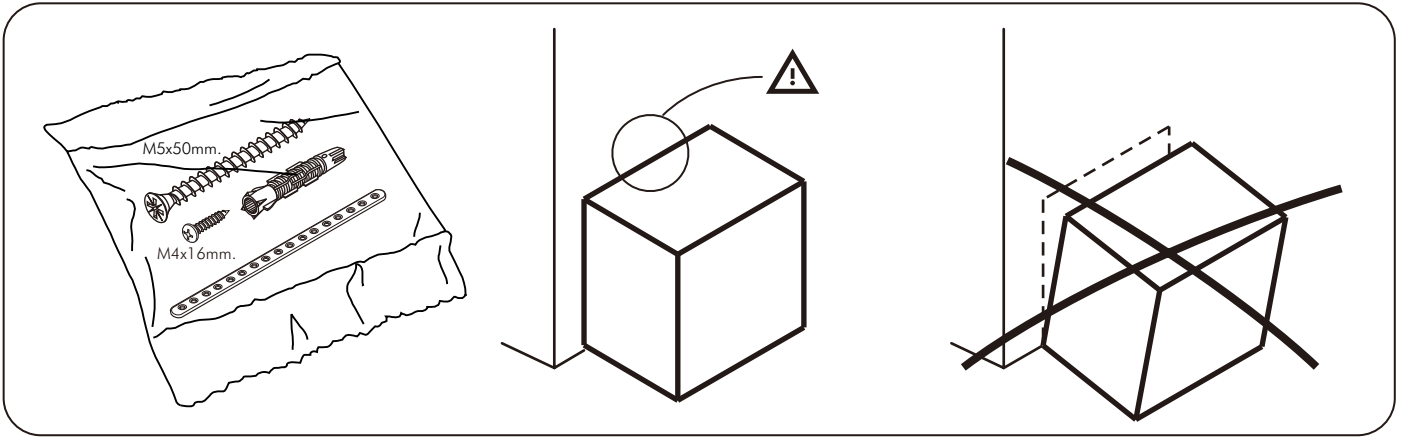
HARSH-P

Chest OF 3 Drawers



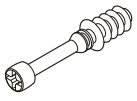
CONNECT SYSTEM





HARDWARE

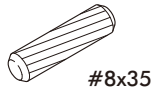
-BODY SET



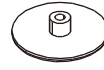
x 10



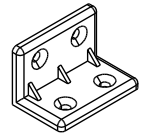
x 10



x 10



x 4



x 4



x 2



x 32



x 9



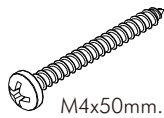
x 2



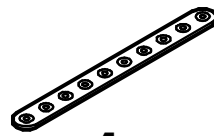
x 6



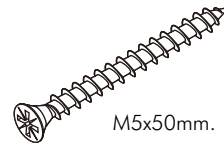
x 4



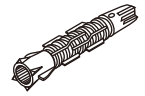
x 4



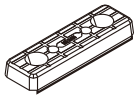
x 1



x 1

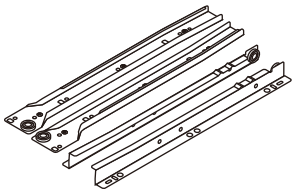


x 1



x 8

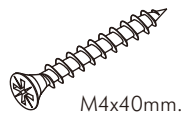
-DRAWER SET



x 3



x 42



x 36



x 24

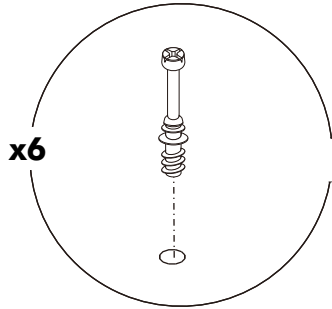
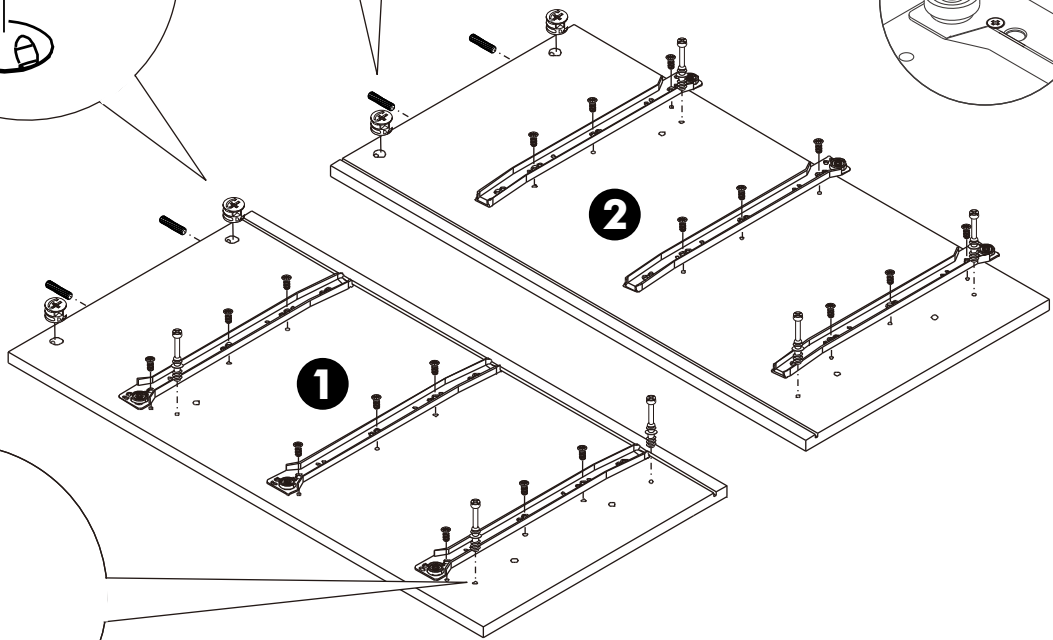
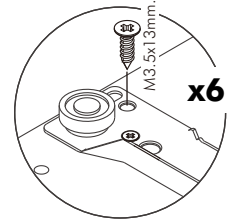
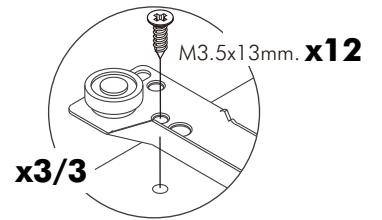
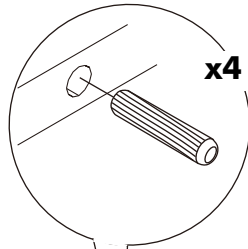
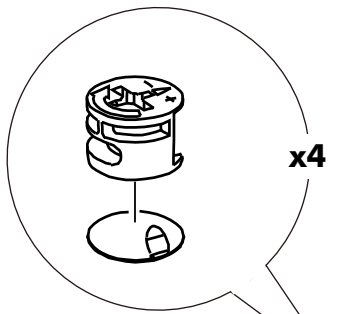


x 1

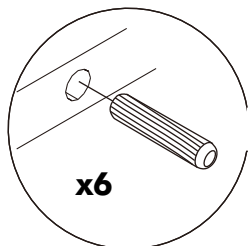
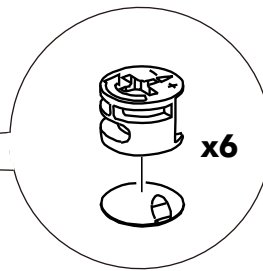
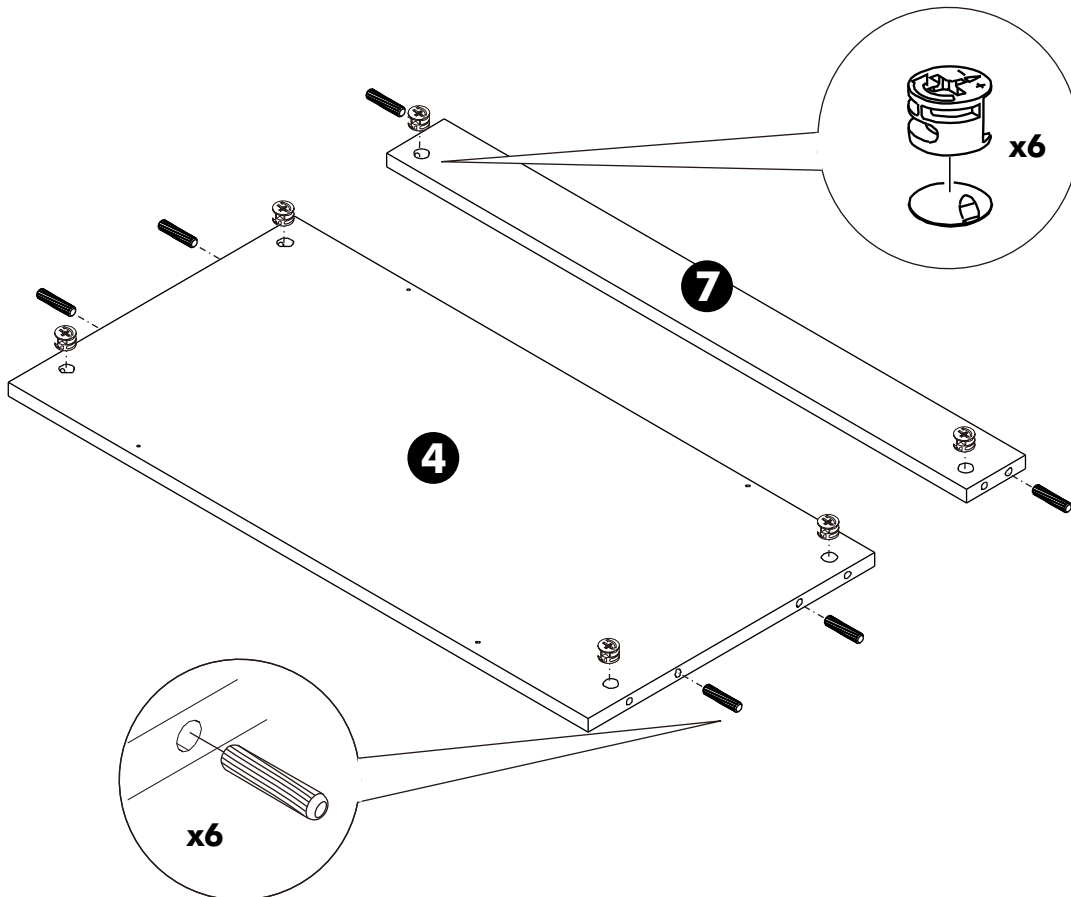
ASSEMBLY

-BODY SET

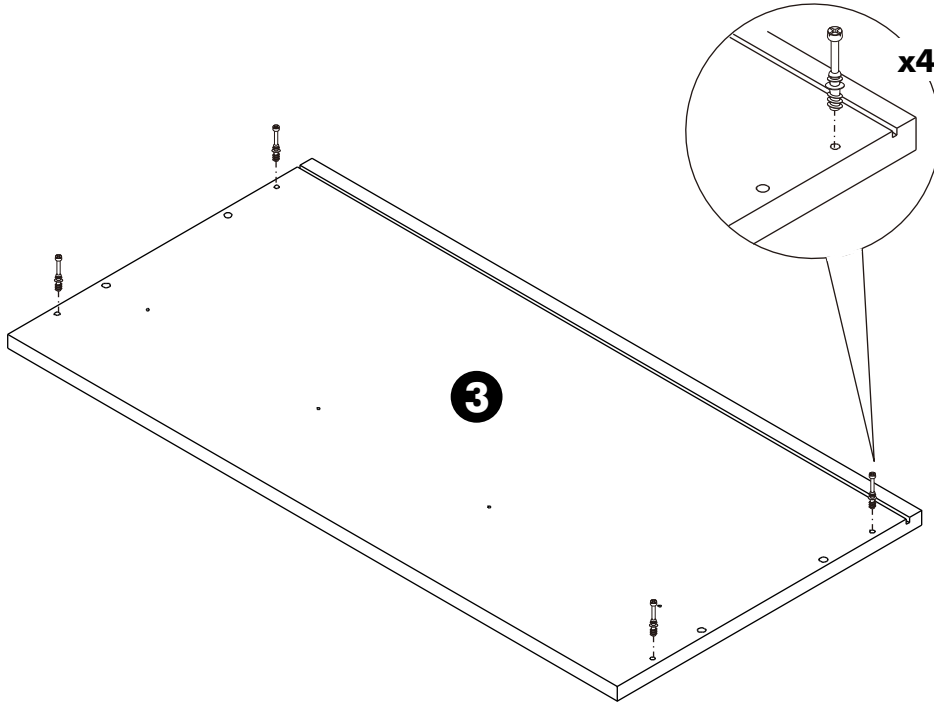
1.



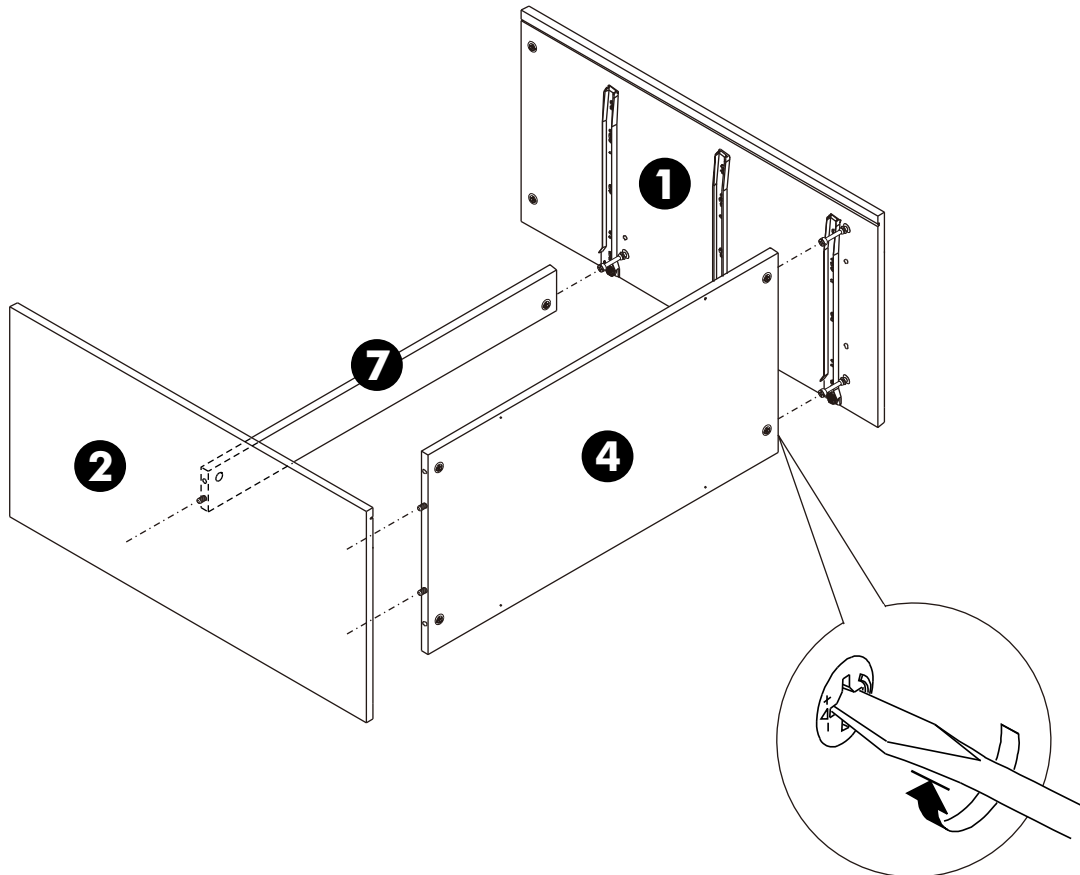
2.



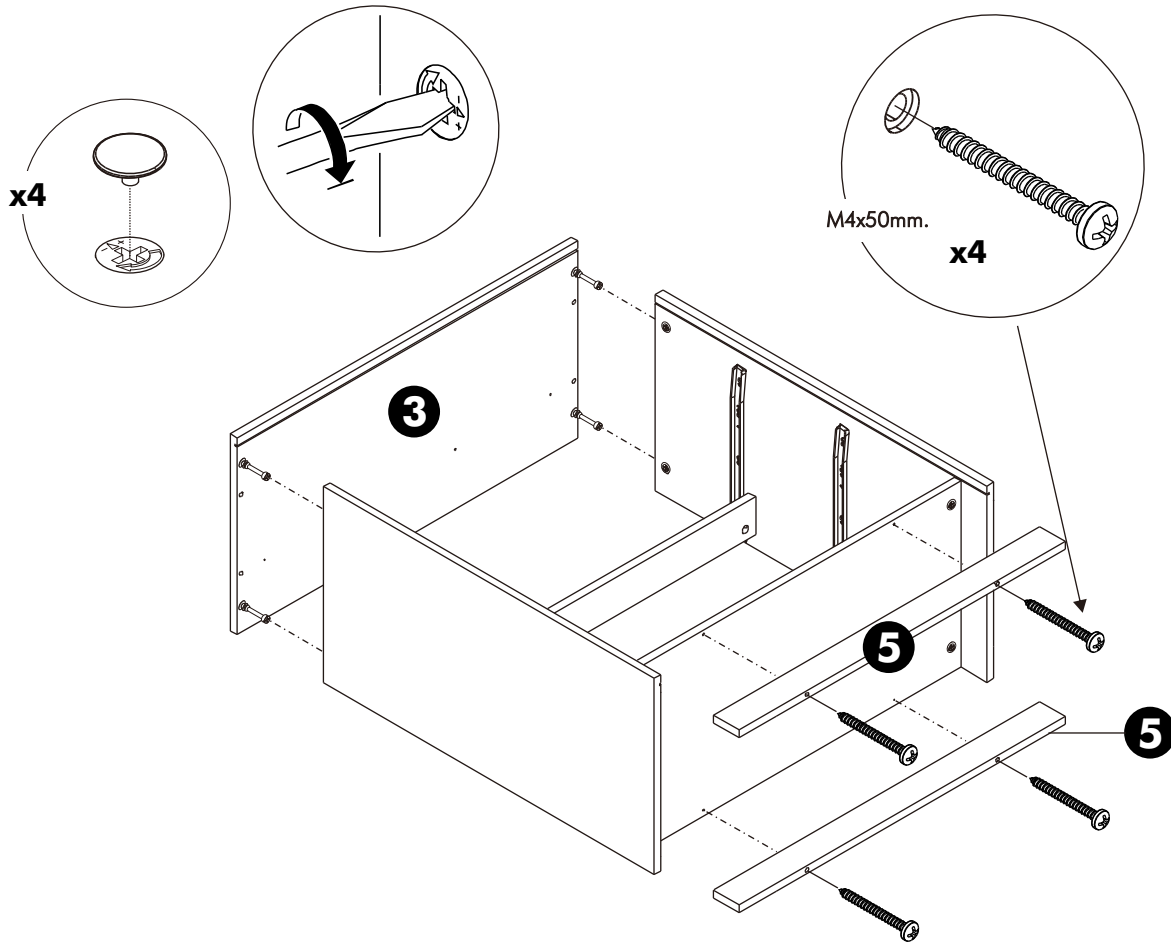
3.



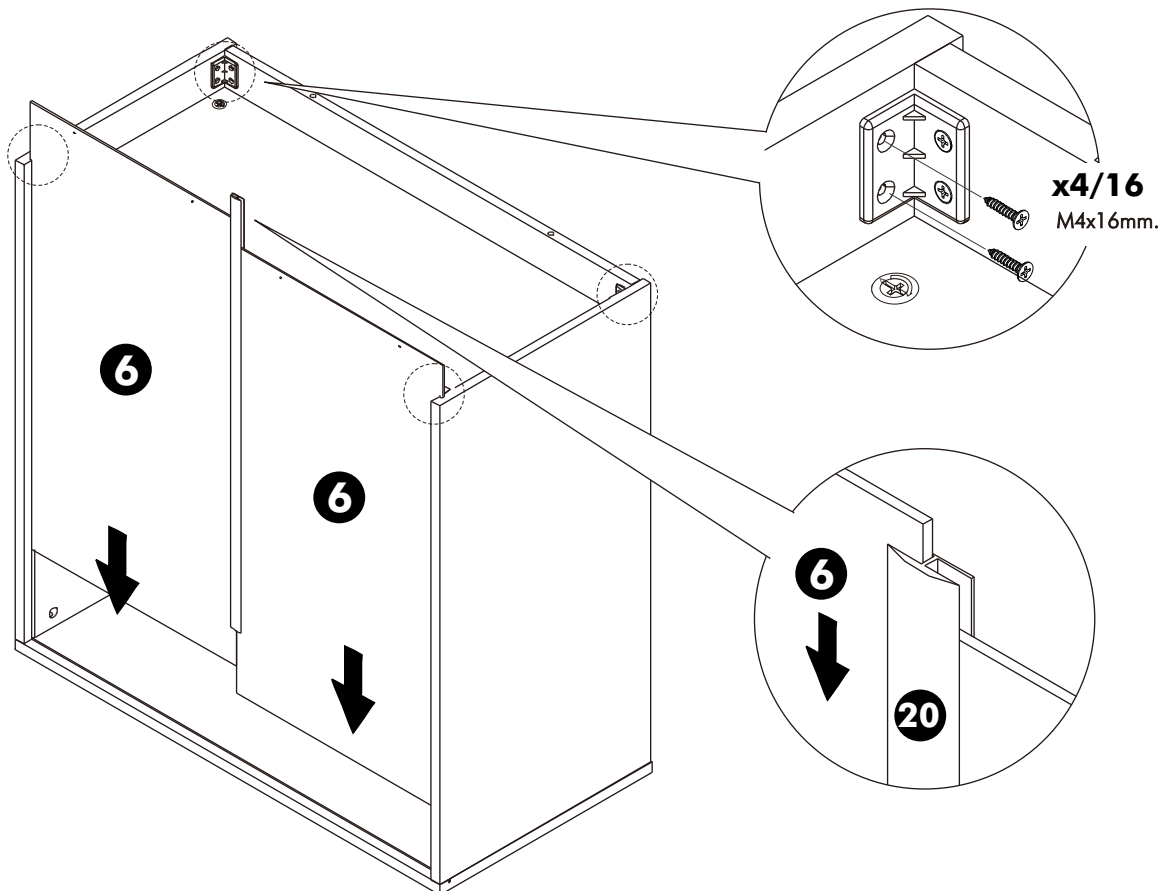
4.



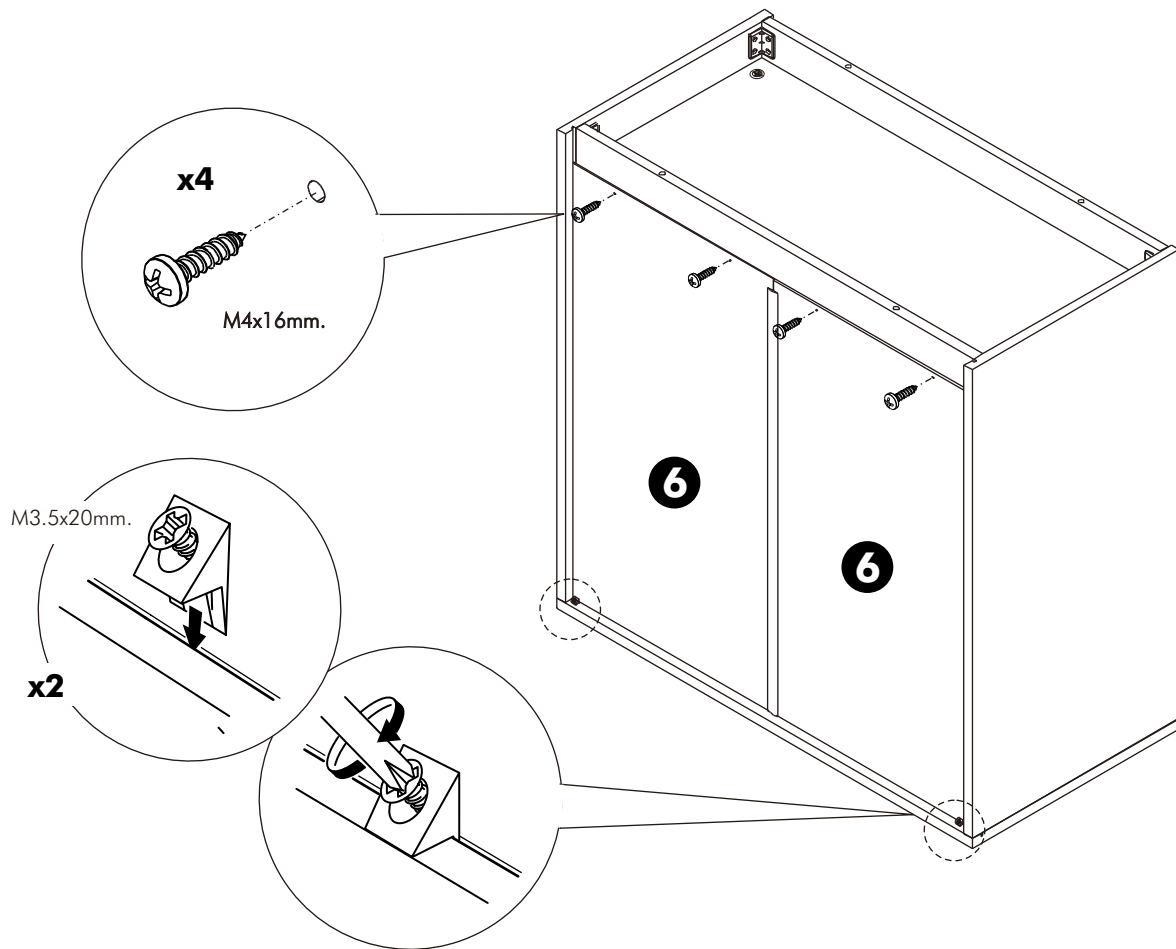
5.



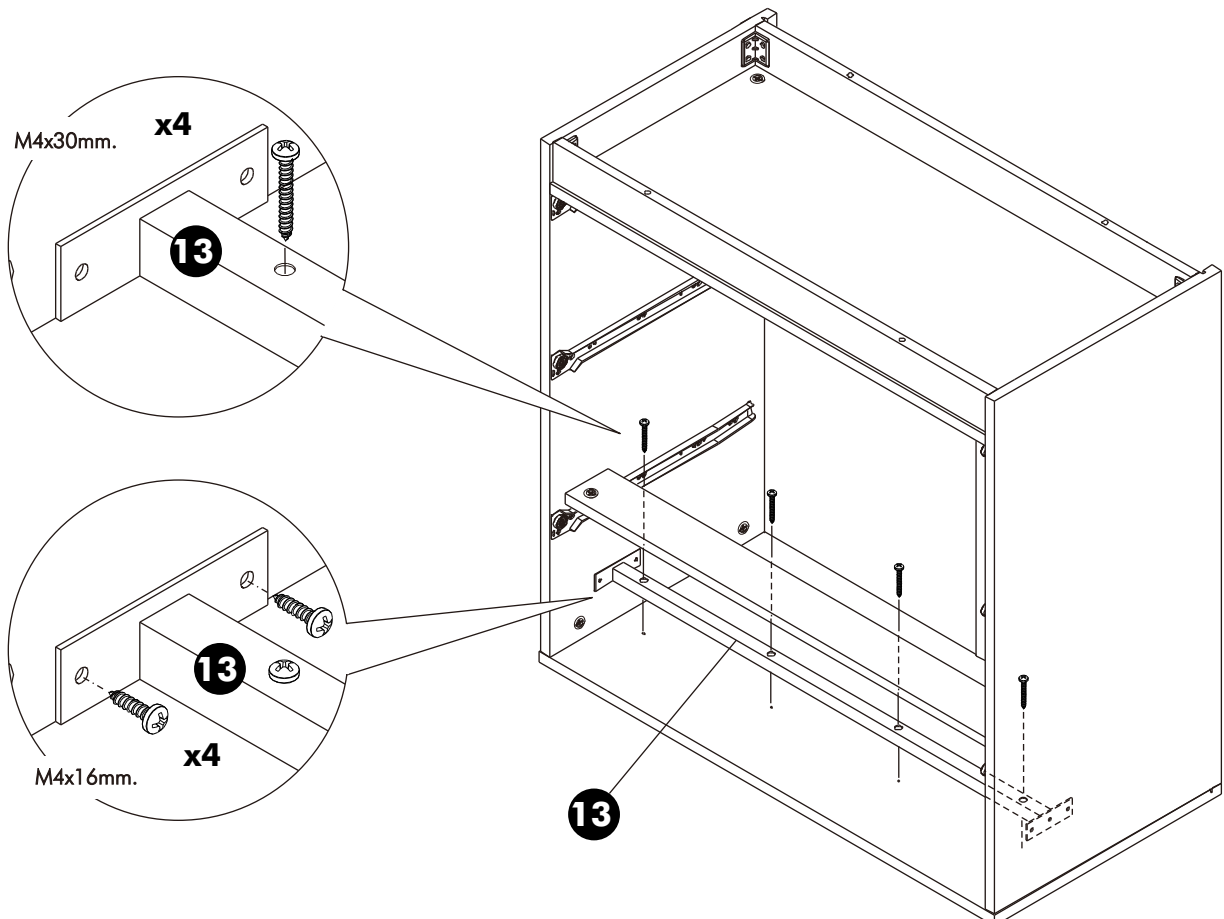
6.



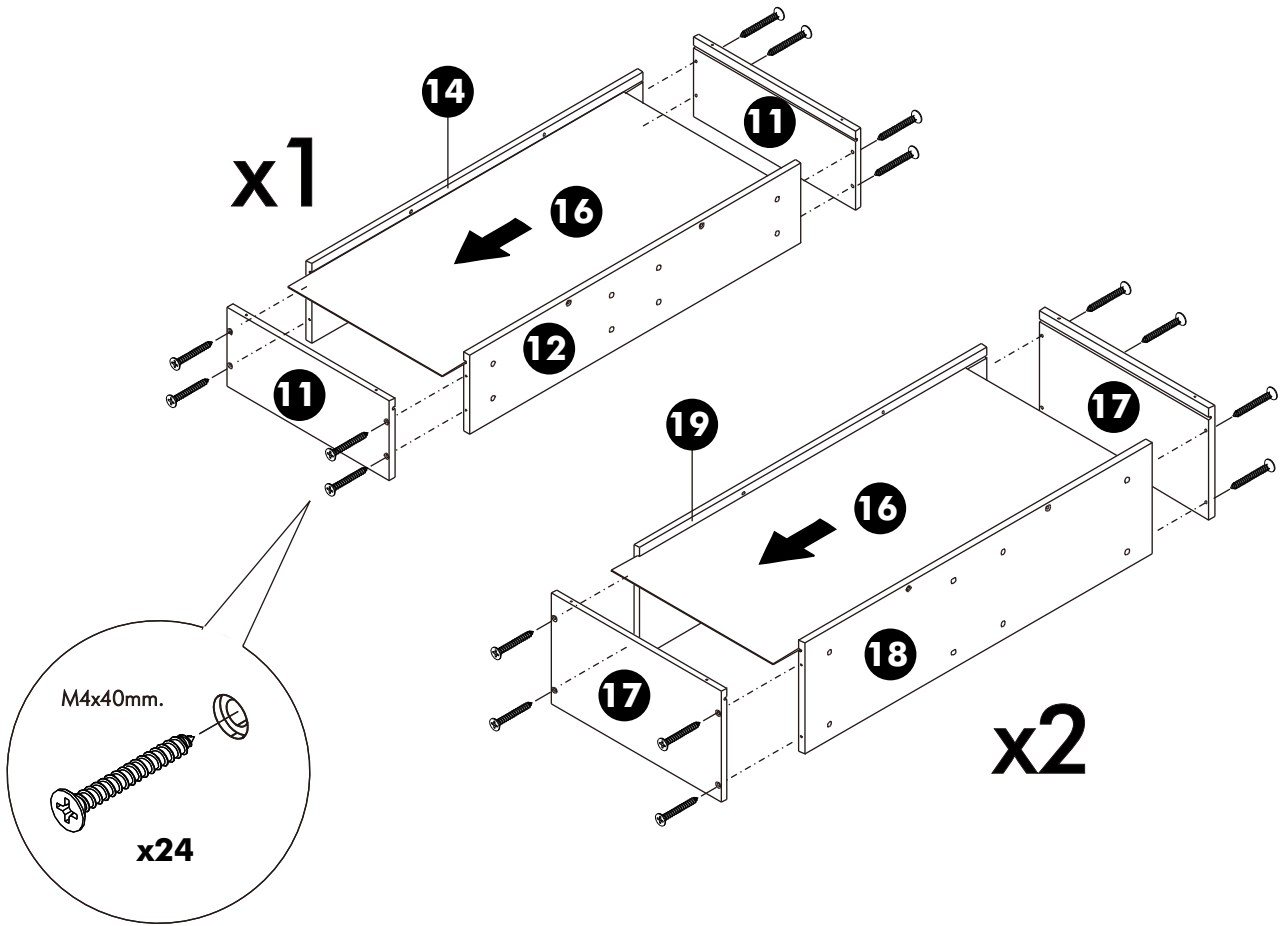
7.



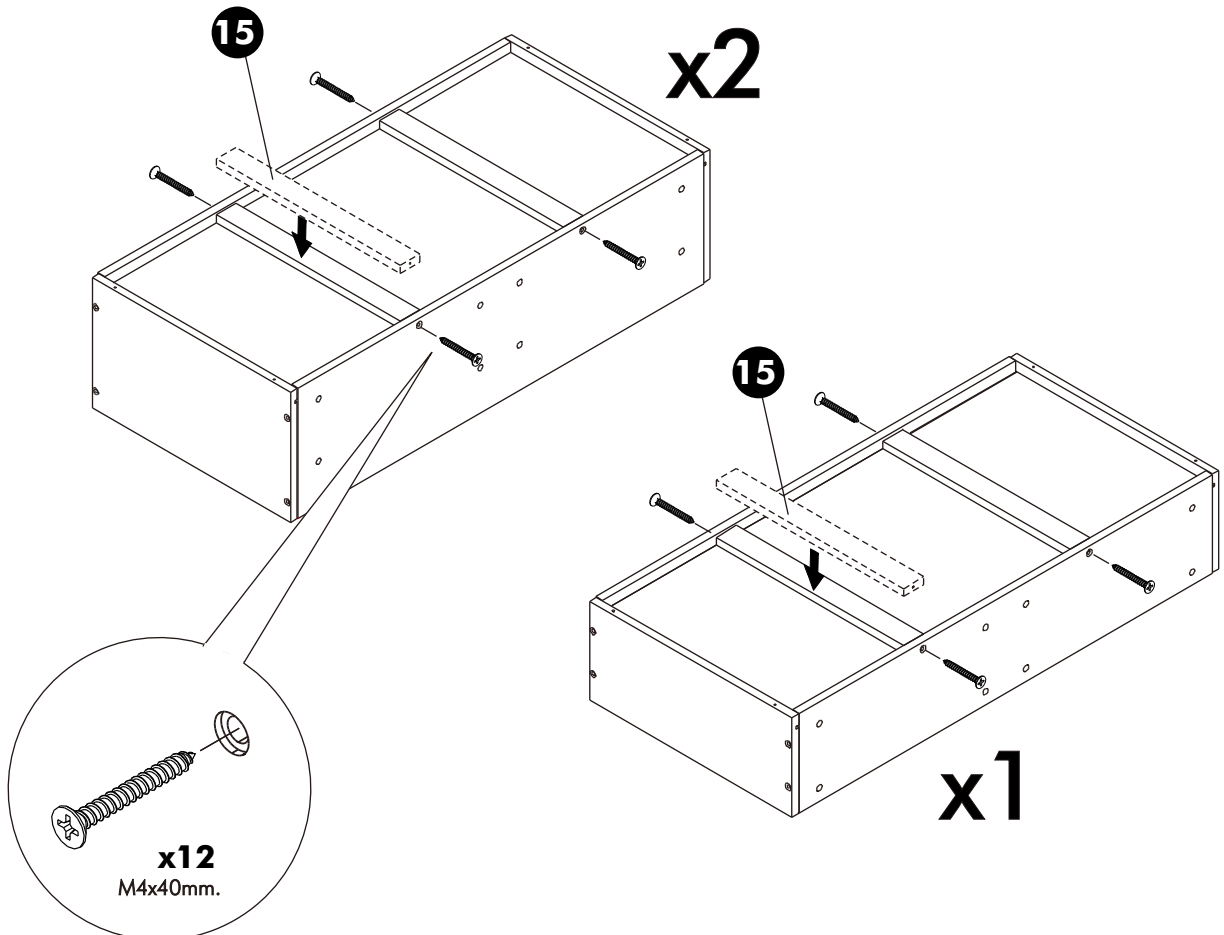
8.



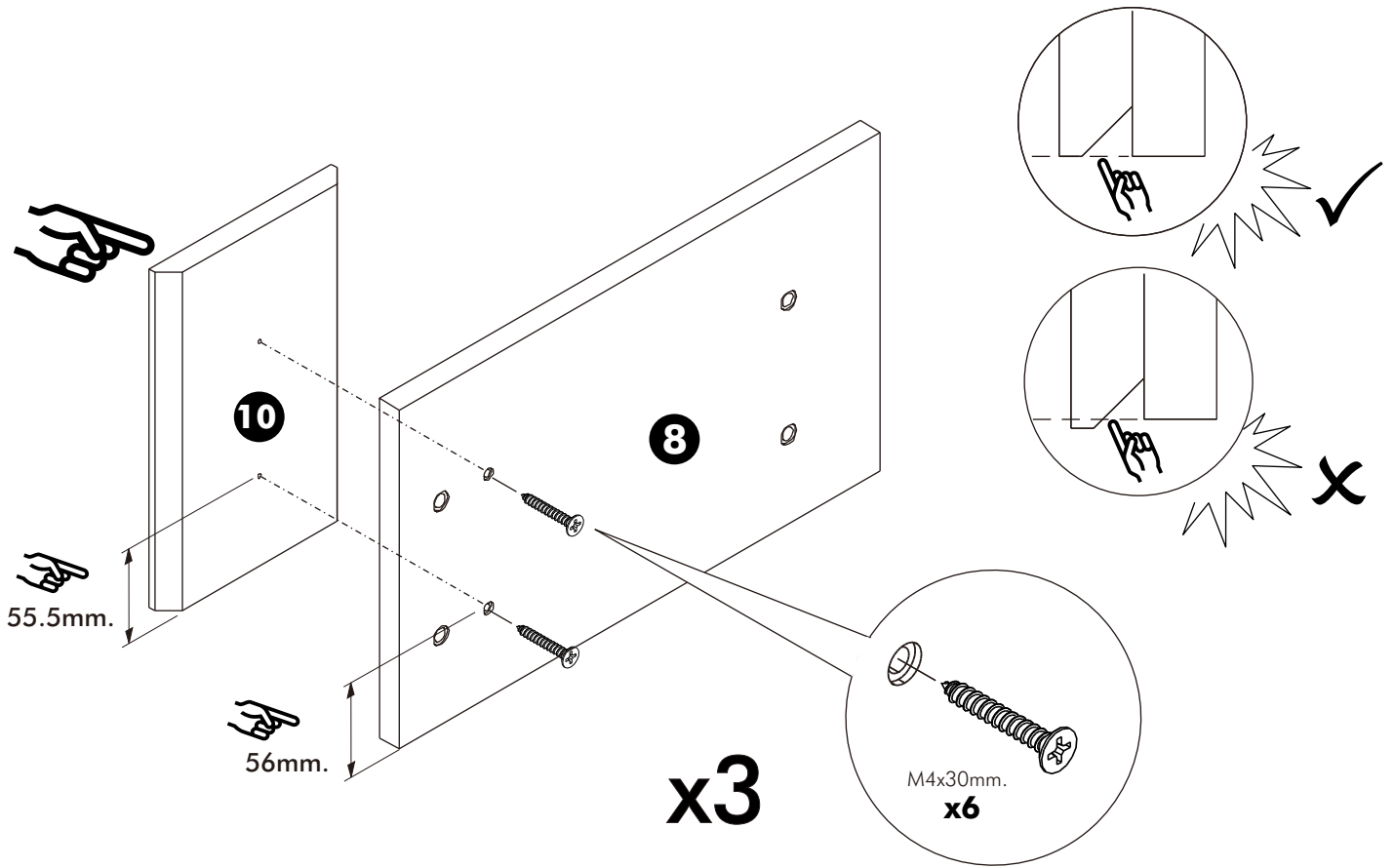
9.



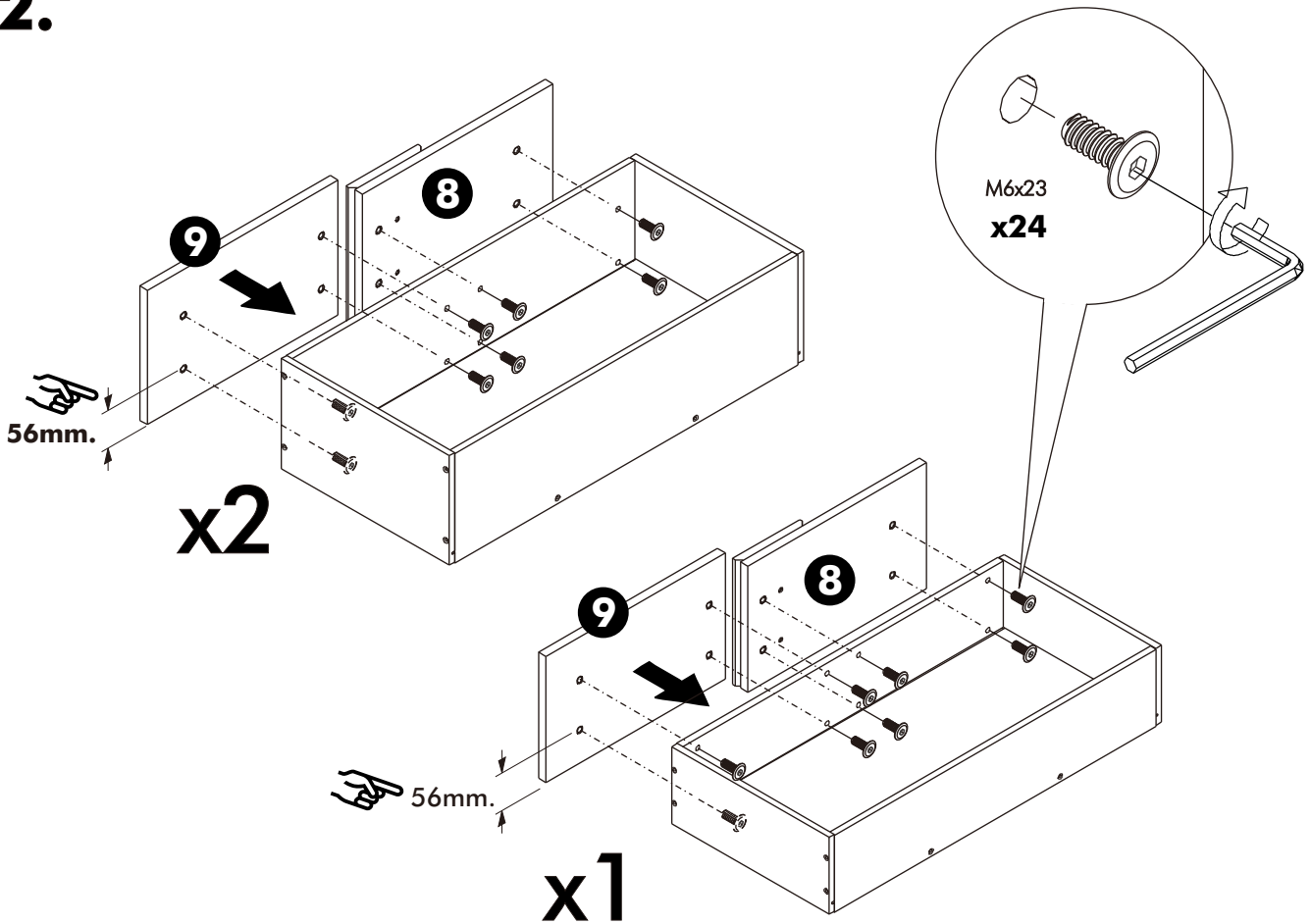
10.



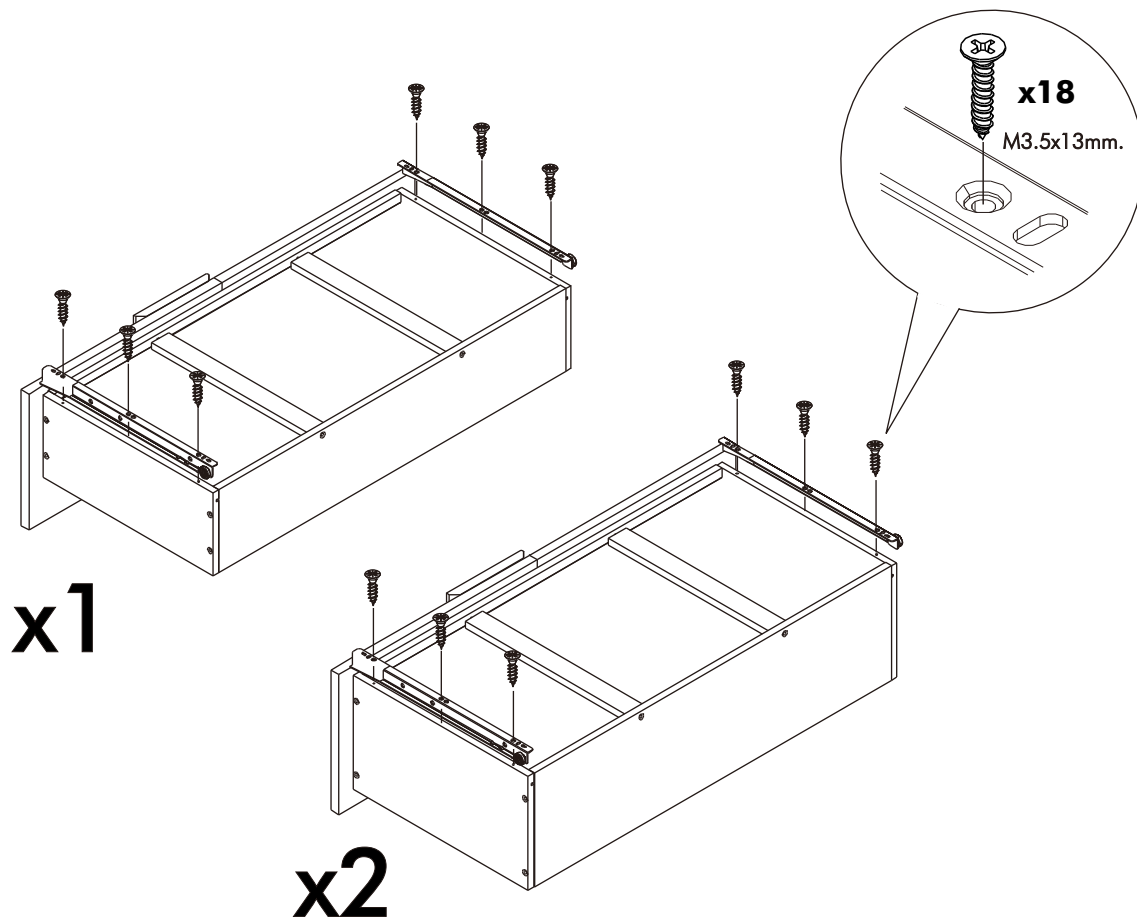
11.



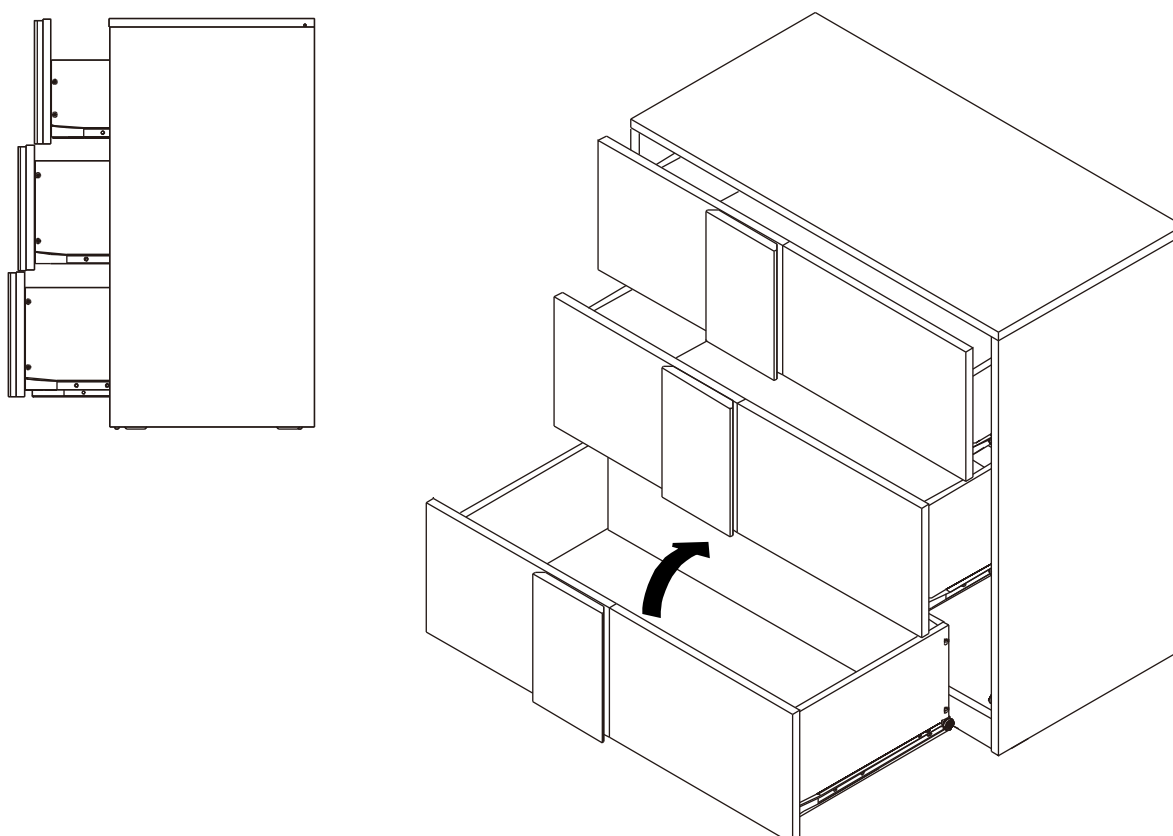
12.

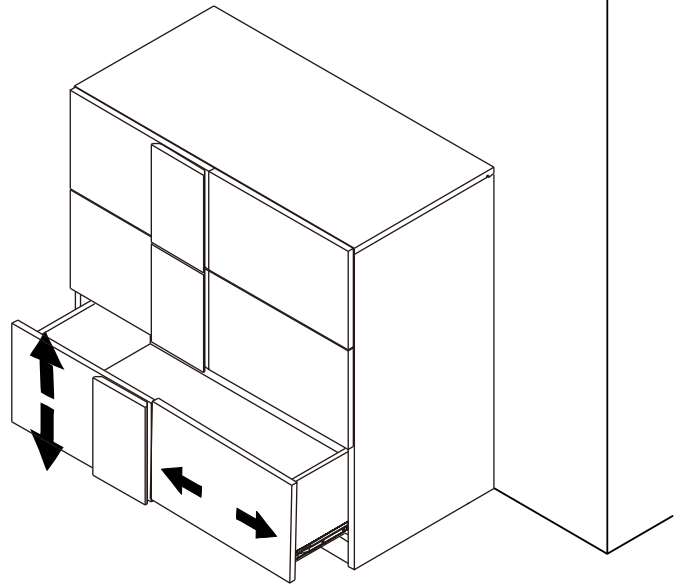
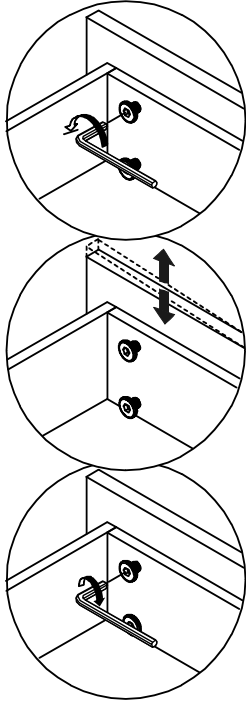


13.



14.





AFTER FINISHED ASSEMBLY.

INCASE OF GAP BETWEEN DRAWERS ARE NOT ALIGN.
PLEASE ADJUST AS BELOW.

1. LOOSE SCREW A LITTLE BIT.
2. THEN MOVE FRONT DRAWER TO ALINGNMENT POSITION.
3. TIGHTEN SCREW.